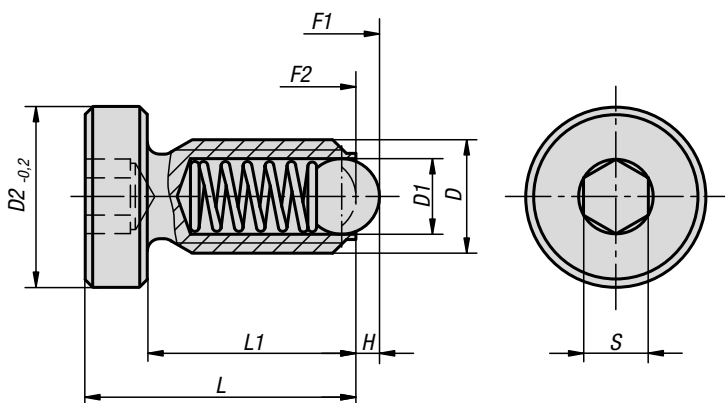


Spring plungers

with head



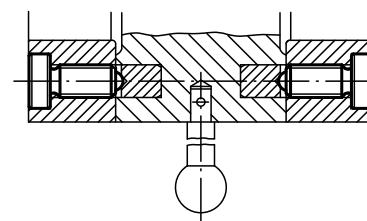
Material:
Steel or stainless steel.

Version:
Steel black oxidised.
Stainless steel bright.
Ball steel or stainless steel, hardened, bright.

Sample order:
K0336.10

KIPP Spring plungers with head

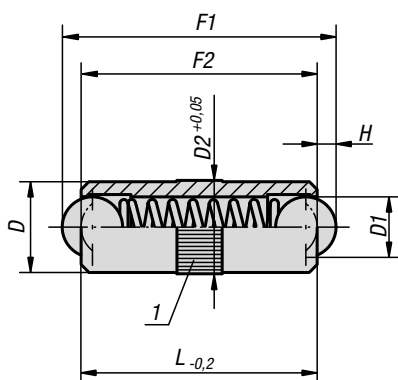
Order No. steel	Order No. stainless steel	D	D1	D2	H	L	L1	S	Spring force initial pressure F1 approx. N	Spring force final pressure F2 approx. N
K0336.04	K0336.041	M4	2,5	7	0,8	13	10	2	4	10
K0336.05	K0336.051	M5	3	8,5	0,9	17	13	2,5	6	11
K0336.06	K0336.061	M6	3,5	10	1	16	12	3	9	13
K0336.08	K0336.081	M8	5	13	1,5	21	16	4	15	30
-	K0336.101	M10	6	16	2	26	20	5	20	35
K0336.10	-	M10	6	16	2	26	20	5	20	40
K0336.12	K0336.121	M12	8	18	2,5	32	25	6	30	55



K0337

Spring plungers

smooth version, double-sided



Material:
Sleeve brass.
Ball and spring stainless steel.

Version:
Balls hardened, bright.

Sample order:
K0337.05

KIPP Spring plungers smooth version, double-sided

Order No.	D	D1	D2	L	H	Spring force initial pressure F1 approx. N	Spring force final pressure F2 approx. N
K0337.025	2,5	2	2,55	6	0,65	1,5	2,8
K0337.03	3	2,5	3,05	8	0,8	2,5	6
K0337.04	4	3	4,05	10	0,9	3	7
K0337.05	5	4	5,05	12	1,2	4	8
K0337.06	6	5	6,05	16	1,6	6	10
K0337.08	8	6	8,05	20	2	8	12
K0337.10	10	8	10,05	24	2,9	10	16

Drawing reference:
1) knurl