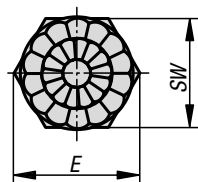
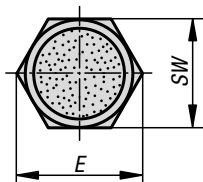
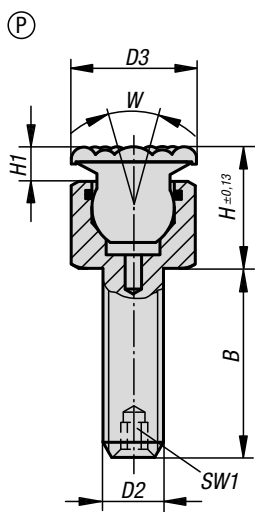
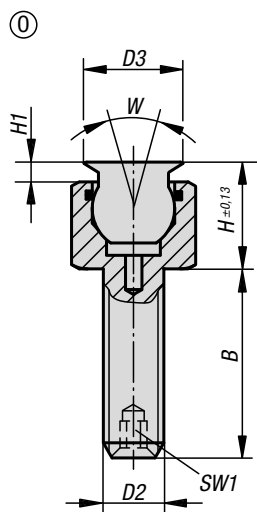
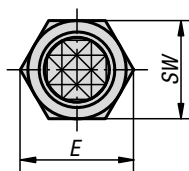
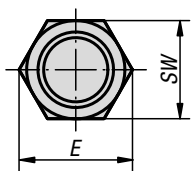
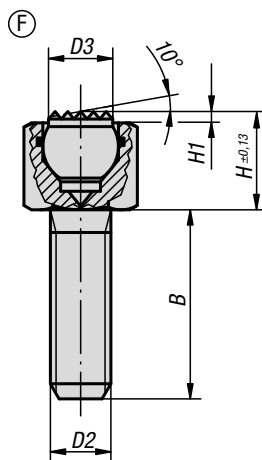
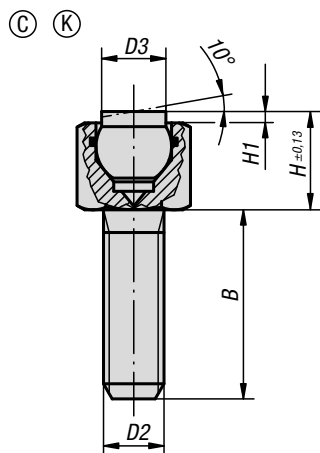


Self-aligning pads

male thread, with O-ring



Material:

Body carbon steel.
 Ball:
 Form C, F, tool steel.
 Form K POM.
 Form O stainless steel diamond impregnated.
 Form P stainless steel with polyurethane surface.

Version:

Body tempered, black oxidised.
 Ball:
 Form C, F hardened, black oxidised.
 Form K POM ball, white.
 Form O surface comparable to 100 grade abrasive grit.
 Form P polyurethane, hardness 60 Shore.

Sample order:

K0288.506X012
 (include length B)

Note:

Self-aligning pads are used to support and clamp unmachined and machined workpieces. They also serve as stops, supports and thrust pads in fixtures and toolmaking.

Ball secured against rotation.

Form O: The abrasive diamond surface is bonded firmly to the ball. It is ideally suited to supporting smooth or slippery applications with a minimum of clamping pressure. This allows the diamond particles to get a firm grip on a very small area with minimum damage to the surface.

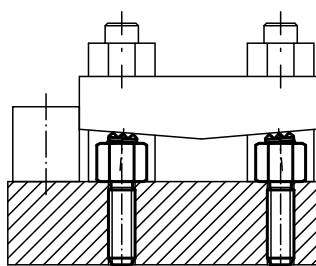
The diamond surface offers excellent wear resistance.

Form P: The polyurethane surface is vulcanised firmly to the ball. It is abrasion-resistant and does not discolour.

It offers optimum protection against damage to delicate surfaces. The pearl-like surface gives a firm grip and allows air to escape so as to prevent any suction effect between the contact surface and the self-aligning pads.

Advantages:

The built-in O-ring holds the ball in place and keeps dirt and foreign particles out, ensuring uniform movement.



Self-aligning pads

male thread, with O-ring

KIPP Form C, flattened steel ball, smooth

Order No.	Form	B	D2	D3	H	H1	E	SW	Ball-Ø	Load rating max. kN (static load only)
K0288.106X012	C	12	M6	6	9,5	1,5	11,5	10	7	9
K0288.106X025	C	25	M6	6	9,5	1,5	11,5	10	7	9
K0288.106X040	C	40	M6	6	9,5	1,5	11,5	10	7	9
K0288.108X012	C	12	M8	8,5	13	1,5	15	13	10	15
K0288.108X025	C	25	M8	8,5	13	1,5	15	13	10	15
K0288.108X040	C	40	M8	8,5	13	1,5	15	13	10	15

KIPP Form F, flattened steel ball, diamond grip

Order No.	Form	B	D2	D3	H	H1	E	SW	Ball-Ø	Load rating max. kN (static load only)
K0288.306X012	F	12	M6	6	9,5	1,5	11,5	10	7	9
K0288.306X025	F	25	M6	6	9,5	1,5	11,5	10	7	9
K0288.306X040	F	40	M6	6	9,5	1,5	11,5	10	7	9
K0288.308X012	F	12	M8	8,5	13	1,5	15	13	10	15
K0288.308X025	F	25	M8	8,5	13	1,5	15	13	10	15
K0288.308X040	F	40	M8	8,5	13	1,5	15	13	10	15

KIPP Form K, flattened POM ball, smooth

Order No.	Form	B	D2	D3	H	H1	E	SW	Ball-Ø	Load rating max. kN (static load only)
K0288.706X012	K	12	M6	6	9,5	1,5	11,5	10	7	2
K0288.706X025	K	25	M6	6	9,5	1,5	11,5	10	7	2
K0288.706X040	K	40	M6	6	9,5	1,5	11,5	10	7	2
K0288.708X012	K	12	M8	8,5	13	1,5	15	13	10	4
K0288.708X025	K	25	M8	8,5	13	1,5	15	13	10	4
K0288.708X040	K	40	M8	8,5	13	1,5	15	13	10	4

KIPP Form O, stainless-steel ball, diamond impregnated

Order No.	Form	B	D2	D3	H	H1	E	SW	SW1	W	Ball-Ø	Load rating max. kN (static load only)
K0288.506X	O	12/25/40	M6	8	10	2	11,5	10	-	28	7	9,2
K0288.508X	O	12/25/40	M8	11	14,5	3	15	13	-	28	10	15,5
K0288.510X	O	15/30/50	M10	14	16	3	19,6	17	3	28	13	18,8
K0288.512X	O	20/40/60	M12	19	19	4	21,9	19	5	24	15	29,8
K0288.516X	O	25/50/80	M16	21	23	4	27,7	24	6	24	20	50,3

KIPP Form P, stainless-steel ball with polyurethane face

Order No.	Form	B	D2	D3	H	H1	E	SW	SW1	W	Ball-Ø
K0288.606X	P	12/25/40	M6	10	12	4	11,5	10	-	28	7
K0288.608X	P	12/25/40	M8	13	16,5	5	15	13	-	28	10
K0288.610X	P	15/30/50	M10	16	18	5	19,6	17	3	28	13
K0288.612X	P	20/40/60	M12	21	21	6	21,9	19	5	24	15
K0288.616X	P	25/50/80	M16	23	25	6	27,7	24	6	24	20