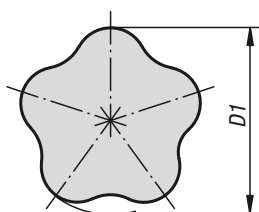
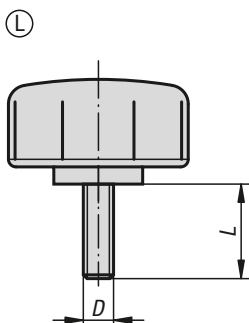
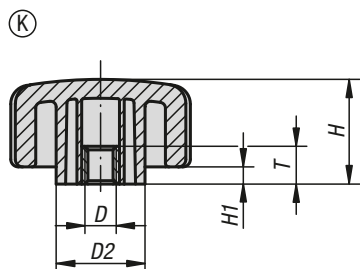


Five lobe grips



The material and form lend this grip a natural and secure gripping effect.

Material, version:

Grip black hard thermoplastic.
Coating black soft thermoplastic.
Tapped bush brass.
Screw electro zinc-plated steel grade 5.8.

Sample order:

K0279.4006X20 (include length L)

Note:

SYMPA TOUCH five lobe grips are available in 3 sizes with internal and external threads.

On request:

Other screw sizes, screw lengths, versions and colours.

KIPP Five lobe grips with internal thread

Order No.	Form	D	D1	D2	H	H1	T
K0279.4005	K	M5	40	19	27,7	4,6	12,5
K0279.4006	K	M6	40	19	27,7	4,6	12,5
K0279.4008	K	M8	40	19	27,7	4,6	12,5
K0279.4010	K	M10	40	19	27,7	4,6	12,5
K0279.5006	K	M6	50	23,5	27,7	4,6	12,5
K0279.5008	K	M8	50	23,5	27,7	4,6	12,5
K0279.5010	K	M10	50	23,5	27,7	4,6	12,5
K0279.6006	K	M6	60	31,8	27,7	4,6	12,5
K0279.6008	K	M8	60	31,8	27,7	4,6	12,5
K0279.6010	K	M10	60	31,8	27,7	4,6	12,5

KIPP Five lobe grips with external thread

Order No.	Form	D	D1	D2	H	H1	L
K0279.4006X	L	M6	40	19	27,7	4,6	15/20/25/35
K0279.4008X	L	M8	40	19	27,7	4,6	16/25/35
K0279.4010X	L	M10	40	19	27,7	4,6	20/30/40/50
K0279.5006X	L	M6	50	23,5	27,7	4,6	15/20/25/35
K0279.5008X	L	M8	50	23,5	27,7	4,6	16/25/35
K0279.5010X	L	M10	50	23,5	27,7	4,6	30/40/50
K0279.6006X	L	M6	60	31,8	27,7	4,6	15/20/25/35
K0279.6008X	L	M8	60	31,8	27,7	4,6	16/25/35
K0279.6010X	L	M10	60	31,8	27,7	4,6	20/30/40/50