

Pull handles

stainless steel



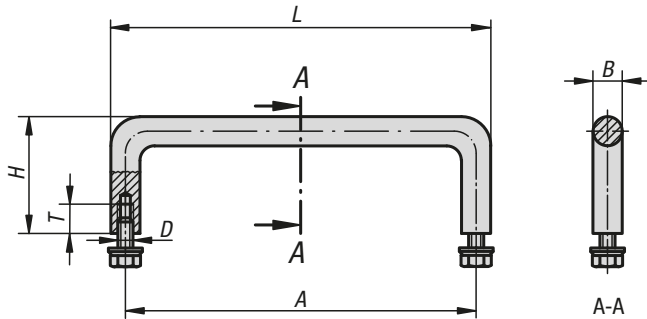
Material:
Pull handle 1.4404 stainless steel.
Fastening material grade A4.

Version:
Semi-gloss vibratory ground.

Sample order:
K0206.120

Note:
Stainless steel pull handles are used mainly on equipment in the medical and food industry as well as in laboratories and nuclear technology.

Assembly:
From the rear.



KIPP Pull handles stainless steel

| Order No. | A | B | D | H | L | T | Load capacity N |
|-----------|-----|----|-------|----|-----|----|-----------------|
| K0206.100 | 100 | 8 | M5x10 | 35 | 108 | 10 | 1000 |
| K0206.120 | 120 | 10 | M5x10 | 40 | 130 | 10 | 1000 |
| K0206.250 | 250 | 10 | M5x10 | 40 | 260 | 10 | 1000 |
| K0206.350 | 350 | 10 | M5x10 | 40 | 360 | 10 | 1000 |

Notes

