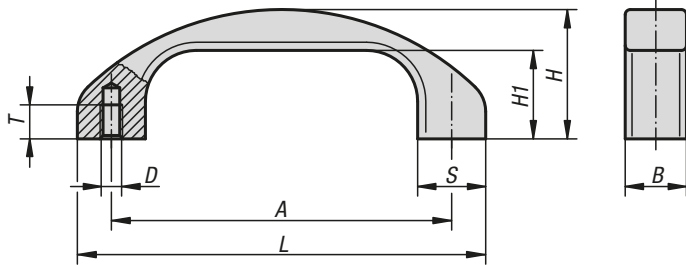


## Pull handles



**Material:**  
Profile aluminium EN AW-6060

**Version:**  
High quality anodised version, glass-bead blasted, semi-gloss finish.

**Sample order:**  
K0195.120061

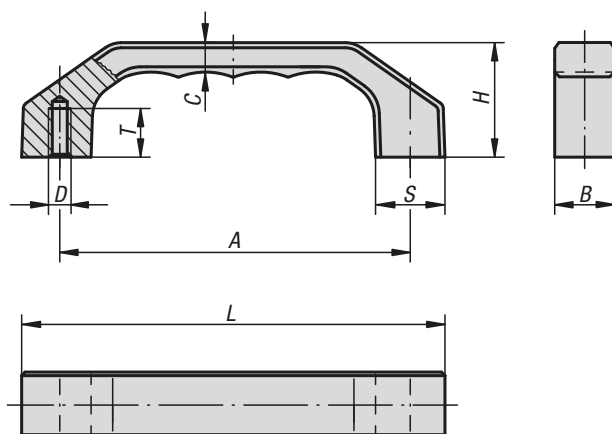
**Assembly:**  
From the rear.

### KIPP Pull handles

Order No.	Main colour	A	B	D	H	H1	L	S	T	Load capacity N
K0195.120061	black anodised	120	22	M6	46	31	144	24	12	1000
K0195.140081	black anodised	140	25	M8	53	36	168	28	15	1000
K0195.120063	natural anodised	120	22	M6	46	31	144	24	12	1000
K0195.140083	natural anodised	140	25	M8	53	36	168	28	15	1000

# K0199

## Pull handles



**Material:**  
EN AW-6060

**Version:**  
Matt-finished and anodised or powder-coated

**Sample order:**  
K0199.140082

**Assembly:**  
From the rear.

### KIPP Pull handles

Order No. natural	Order No. black	Order No. titanium	A	B	C	D	H	L	S	T	Load capacity N
K0199.120061	K0199.120062	K0199.120063	120	22	10,5	M6	39	146	24	15	1000
K0199.140081	K0199.140082	K0199.140083	140	25	12	M8	45	170	28	16	1000
K0199.160081	K0199.160082	K0199.160083	160	28	13,5	M8	52	194	32	16	1000