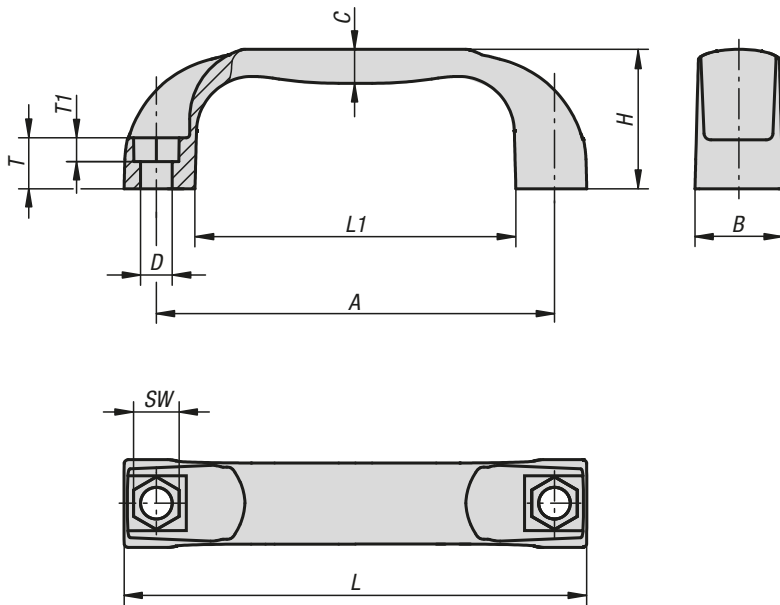


Pull handles



Material:

Glass-bead reinforced thermoplastic PA (polyamide) or fiberglass reinforced PP (polypropylene).

Version:

Polypropylene black-grey.
Polyamide black-grey RAL 7021, pure orange RAL 2004, colza yellow RAL 1021, signal green RAL 6032, traffic blue RAL 5017, traffic red RAL 3020 and light-grey RAL 7035.

Sample order:

K0190.10940684 (pull handle traffic red)

Note for ordering:

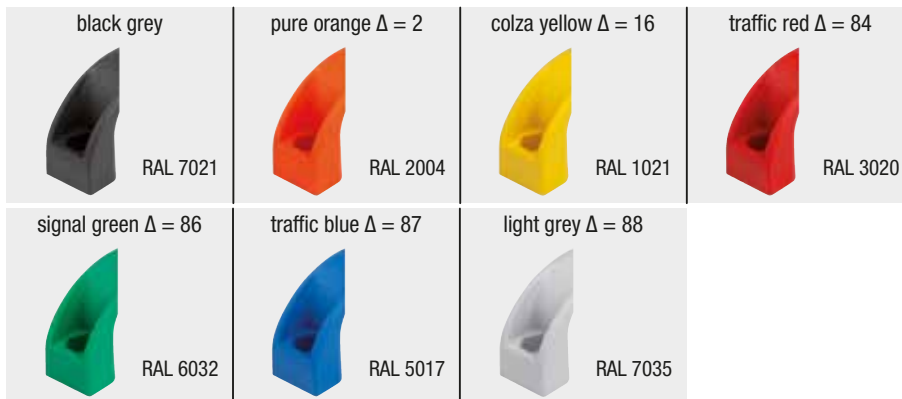
Δ Add the desired colour here. No colour code is required for black grey.

Note:

The fastening hole is designed to accept the head of a cap or hexagon head screw or a hexagon nut.

Assembly:

From the front or rear.



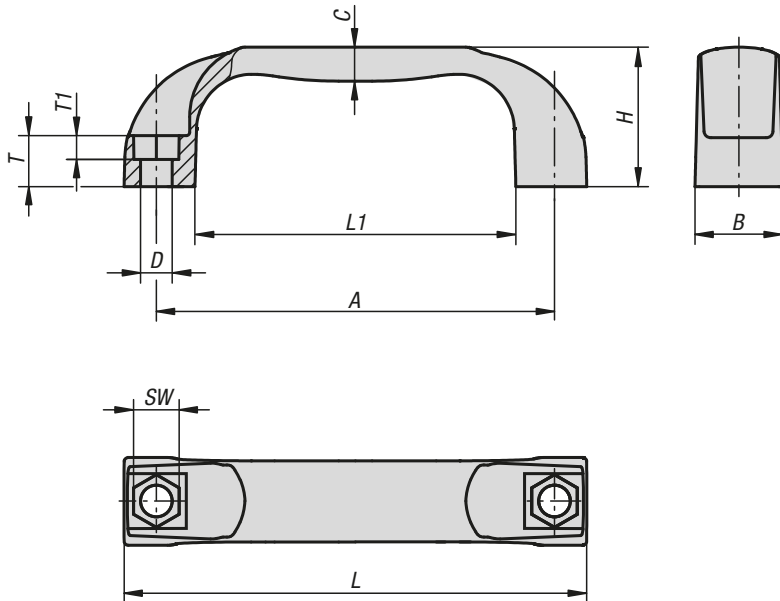
KIPP Pull handles

Order No.	Main material	A	B	C	D	H	L	L1	SW	T	T1	Load capacity N
K0190.209406	polypropylene	94	21	8	6,6	36	109	76	10	13	6	500
K0190.211708	polypropylene	117	26	10	9	41	136	94	13	15	8	800
K0190.213208	polypropylene	132	27	11	9	44	154	112	13	16	8	800
K0190.215008	polypropylene	150	27	11	9	44	172	132	13	16	8	800
K0190.217908	polypropylene	179	28	11	9	50	197	156	13	17	8	800

Order No.	Main material	A	B	C	D	H	L	L1	SW	T	T1	Load capacity N
K0190.109406Δ	polyamide	94	21	8	6,6	36	109	76	10	13	6	1000
K0190.111708Δ	polyamide	117	26	10	9	41	136	94	13	15	8	1500
K0190.113208Δ	polyamide	132	27	11	9	44	154	112	13	16	8	1500
K0190.115008Δ	polyamide	150	27	11	9	44	172	132	13	16	8	1500
K0190.117908Δ	polyamide	179	28	11	9	50	197	156	13	17	8	1500

Pull handles

high temperature resistant



Material:

Thermoplastic PPA (resistant to high temperatures), fibreglass reinforced.

Version:

black.

Sample order:

K0190.311708

Note:

The fastening hole is designed to accept the head of a cap or hexagon head screw or a hexagon nut.

Temperature range:

Continuous operating temperature acc. to IEC 216 max. 150°C - 160°C.

Temporary operating temperature max. 250°C.

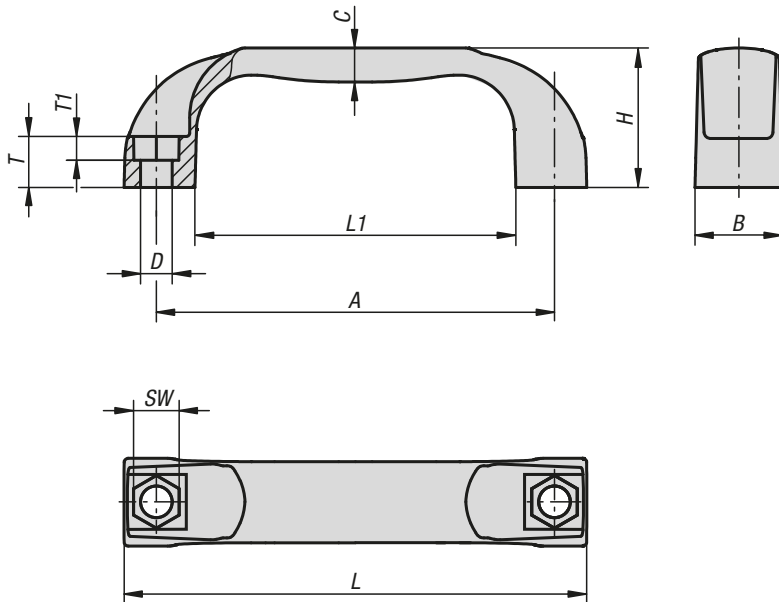
Assembly:

From the front or rear.

KIPP Pull handles, high temperature resistant

Order No.	A	B	C	D	H	L	L1	SW	T	T1	Load capacity N
K0190.311708	117	26	10	9	41	136	94	13	15	8	1500
K0190.313208	132	27	11	9	44	154	112	13	16	8	1500
K0190.315008	150	27	11	9	44	172	132	13	16	8	1500

Pull handles antibacterial



Material:

Thermoplastic PA (polyamide) reinforced.

Version:

slate grey.

Sample order:

K0190.1211708144

Note:

The fastening hole is designed to accept the head of a cap or hexagon head screw or a hexagon nut.

Application:

The antibacterial KIPP MEDI grip products are highly effective against a variety of hazardous microorganisms, such as bacteria, fungi and even multi-resistant bacteria (e.g. MRSA). The plastic used incorporates micro-silver particles with an antimicrobial effect to ensure effective results throughout the entire product life cycle.

Function:

The growth of harmful micro-organisms on the product surface is effectively disrupted by means of silver ions, and the existing germs on MEDI grip products are consistently reduced (as tested and confirmed by an accredited testing laboratory). During cleaning cycles the risk of infection through touching these products is significantly lower.

Assembly:

From the front or rear.

Advantages:

Resistant to humidity and cleaning products (during disinfection) with no toxic side effects.

Applications:

For installation on machines, equipment, plants and furnishings in areas with increased hygienic requirements (including hospitals, doctors' surgeries, rehabilitation centres and food production facilities), as well as for use in public areas or regularly frequented institutions (i.e. nursing homes or daycare centres).

KIPP Pull handles antibacterial

Order No.	A	B	C	D	H	L	L1	SW	T	T1	Load capacity N
K0190.1211708144	117	26	10	9	41	136	94	13	15	8	1500
K0190.1215008144	150	27	11	9	44	172	132	13	16	8	1500

Pull handles antistatic



Material:

Thermoplastic PA (polyamide) reinforced.

Version:

graphite black.

Sample order:

K0190.111170824

Note:

The fastening hole is designed to accept the head of a cap or hexagon head screw or a hexagon nut.

Application:

Sensitive electrical or electronic equipment, components and devices (ESD sensitive elements) may be damaged or destroyed by electrostatic discharges (ESD) in the immediate vicinity.

Electrostatic discharges can come from people or through handling ESD sensitive components (e.g. during production, assembly, transport, storage etc).

Electrically conductive products which conform to DIN EN 61340-5-1 are essential within electronic environments to prevent an electrostatic discharge.

These products can be used for ESD applications or in ESD protection areas (EPA) in accordance with DIN EN 61340-5-1.

Assembly:

From the front or rear.

Safety:

These ESD products can also be used for devices, components and protection systems in areas with high risk of explosion.

Use of these ESD products prevents the occurrence of electrostatic spark discharges, eliminating the potential ignition of gases and dusts which could lead to explosions in enclosed spaces.

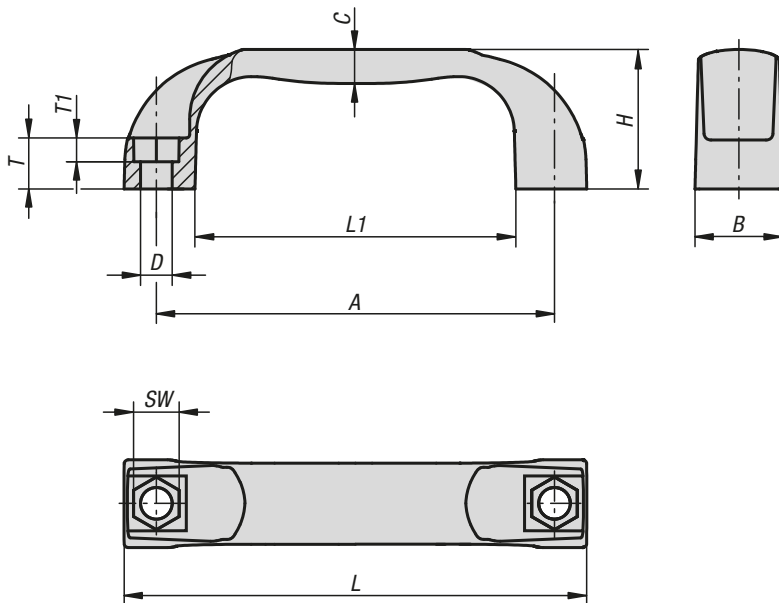
Manufacturers and operators must use and conform to ATEX directives for the protection of persons working in areas with high risk of explosion.

These ESD products are certified by TÜV-Süd in relation to their electrical discharge capability.

Target groups:

Device manufacturers required to conform to ATEX product directive 2014/34/EU.

Operators required to conform to ATEX worker protection directive 1999/92/EC.



KIPP Pull handles antistatic

Order No.	Main colour	A	B	C	D	H	L	L1	SW	T	T1	Load capacity N
K0190.111170824	graphite black RAL 9011	117	26	10	9	41	136	94	13	15	8	1500
K0190.111500824	graphite black RAL 9011	150	27	11	9	44	172	132	13	16	8	1500