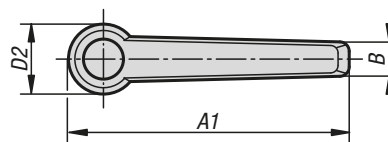
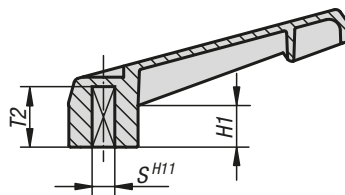
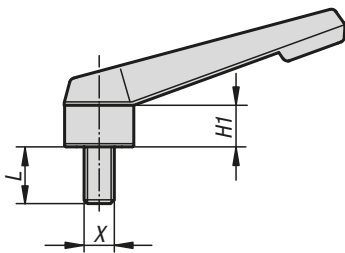
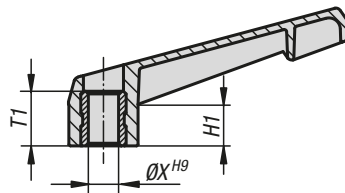
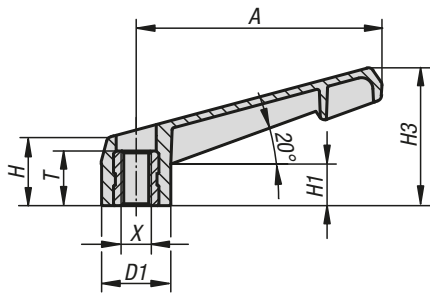


Clamping levers non-adjustable



Material:

Handle fibreglass reinforced plastic.
Steel parts grade 5.8.

Version:

Handle black grey, steel parts blue passivated.

Sample order:

K0175.105X20 (include length L)

Note:

Non-adjustable clamping levers can be used for simple applications. Generally, there must be enough space so that the lever can be rotated through 360°.

On request:

Special versions.



KIPP Non-adjustable clamping levers with internal thread

| Order No. | Thread type | Size | X | T | D1 | D2 | H | H1 | H3 | A | A1 | B |
|--------------|-----------------|------|-----|----|------|------|----|----|------|-----|-----|----|
| K0175.104000 | internal thread | 1 | M4 | 10 | 13,8 | 14 | 17 | 11 | 27 | 40 | 47 | 8 |
| K0175.105000 | internal thread | 1 | M5 | 10 | 13,8 | 14 | 17 | 11 | 27 | 40 | 47 | 8 |
| K0175.106000 | internal thread | 1 | M6 | 10 | 13,8 | 14 | 17 | 11 | 27 | 40 | 47 | 8 |
| K0175.208000 | internal thread | 2 | M8 | 14 | 18,3 | 18,5 | 18 | 11 | 36,5 | 65 | 75 | 9 |
| K0175.310000 | internal thread | 3 | M10 | 14 | 21,8 | 22 | 22 | 14 | 45 | 80 | 91 | 11 |
| K0175.412000 | internal thread | 4 | M12 | 18 | 25,8 | 26 | 26 | 17 | 54 | 95 | 108 | 13 |
| K0175.516000 | internal thread | 5 | M16 | 18 | 30,8 | 31 | 31 | 21 | 63 | 110 | 126 | 16 |

KIPP Non-adjustable clamping levers with external thread

| Order No. | Thread type | Size | X | D1 | D2 | H | H1 | H3 | A | A1 | B | L |
|------------|-----------------|------|-----|------|------|----|----|------|-----|-----|----|----------|
| K0175.105X | external thread | 1 | M5 | 13,8 | 14 | 17 | 11 | 27 | 40 | 47 | 8 | 20 |
| K0175.106X | external thread | 1 | M6 | 13,8 | 14 | 17 | 11 | 27 | 40 | 47 | 8 | 20 |
| K0175.208X | external thread | 2 | M8 | 18,3 | 18,5 | 18 | 11 | 36,5 | 65 | 75 | 9 | 15/20/30 |
| K0175.310X | external thread | 3 | M10 | 21,8 | 22 | 22 | 14 | 45 | 80 | 91 | 11 | 30 |
| K0175.412X | external thread | 4 | M12 | 25,8 | 26 | 26 | 17 | 54 | 95 | 108 | 13 | 30 |
| K0175.516X | external thread | 5 | M16 | 30,8 | 31 | 31 | 21 | 63 | 110 | 126 | 16 | 40 |

KIPP Non-adjustable clamping levers with reamed hole

| Order No. | Thread type | Size | X | T1 | D1 | D2 | H | H1 | H3 | A | A1 | B |
|--------------|-------------|------|----|----|------|------|----|----|------|-----|-----|----|
| K0175.106001 | reamed hole | 1 | 6 | 10 | 13,8 | 14 | 17 | 11 | 27 | 40 | 47 | 8 |
| K0175.208001 | reamed hole | 2 | 8 | 14 | 18,3 | 18,5 | 18 | 11 | 36,5 | 65 | 75 | 9 |
| K0175.310001 | reamed hole | 3 | 10 | 14 | 21,8 | 22 | 22 | 14 | 45 | 80 | 91 | 11 |
| K0175.412001 | reamed hole | 4 | 12 | 18 | 25,8 | 26 | 26 | 17 | 54 | 95 | 108 | 13 |
| K0175.516001 | reamed hole | 5 | 16 | 18 | 30,8 | 31 | 31 | 21 | 63 | 110 | 126 | 16 |

KIPP Non-adjustable clamping levers with square socket

| Order No. | Thread type | Size | S | T2 | D1 | D2 | H | H1 | H3 | A | A1 | B |
|--------------|---------------|------|----|----|------|------|----|----|------|-----|-----|----|
| K0175.105002 | square socket | 1 | 5 | 13 | 13,8 | 14 | 17 | 11 | 27 | 40 | 47 | 8 |
| K0175.206002 | square socket | 2 | 6 | 16 | 18,3 | 18,5 | 18 | 11 | 36,5 | 65 | 75 | 9 |
| K0175.308002 | square socket | 3 | 8 | 18 | 21,8 | 22 | 22 | 14 | 45 | 80 | 91 | 11 |
| K0175.410002 | square socket | 4 | 10 | 20 | 25,8 | 26 | 26 | 17 | 54 | 95 | 108 | 13 |
| K0175.512002 | square socket | 5 | 12 | 26 | 30,8 | 31 | 31 | 21 | 63 | 110 | 126 | 16 |