

## Handwheel washers



**Material:**  
Steel.  
Stainless steel 1.4305.

**Version:**  
Steel black oxidised.  
Stainless steel bright.

**Sample order:**  
K0173.00416

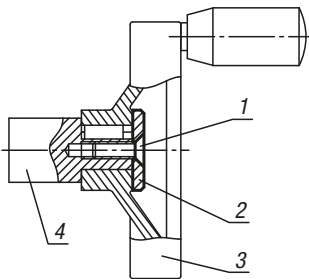
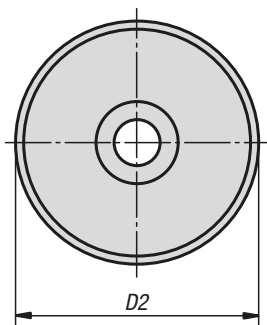
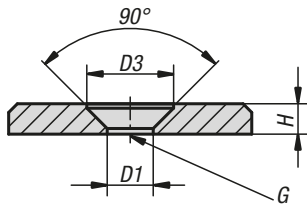
**Note:**  
These washers are used together with DIN EN ISO 2009 or DIN EN ISO 10642 countersunk screws on the end of shafts with keyways to secure handwheels and crank handles.

The washers can be used with the handwheels K0671, K0160, K0161, K0162, K0163, K0164, K0165.

The steel washers are often used as caps for magnets.

**Drawing reference:**  
D3 = for countersunk screw ISO 2009 and ISO 10642

- 1) countersunk screw ISO 2009 and ISO 10642
- 2) washer
- 3) handwheel
- 4) shaft



### KIPP Handwheel washers

Order No. steel	Order No. stainless steel	D1	D2	D3	H	G
K0173.00310	K0173.10310	3,2	10	6	2	M3
K0173.00313	K0173.10313	3,2	13	6	2	M3
K0173.00416	K0173.10416	4,3	16	8,4	3	M4
K0173.00420	K0173.10420	4,3	20	8,4	3	M4
K0173.00520	K0173.10520	5,3	20	10	3,5	M5
K0173.00522	K0173.10522	5,3	22	10	3,5	M5
K0173.00525	K0173.10525	5,3	25	10	3,5	M5
K0173.00528	K0173.10528	5,3	28	10	3,5	M5
K0173.00630	K0173.10630	6,4	30	12	4	M6
K0173.00632	K0173.10632	6,4	32	12	4	M6
K0173.00636	K0173.10636	6,4	36	12	4	M6
K0173.00640	K0173.10640	6,4	40	12	5	M6
K0173.00645	K0173.10645	6,4	45	12	6	M6
K0173.00652	K0173.10652	6,4	52	12	6	M6