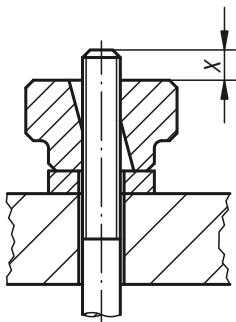
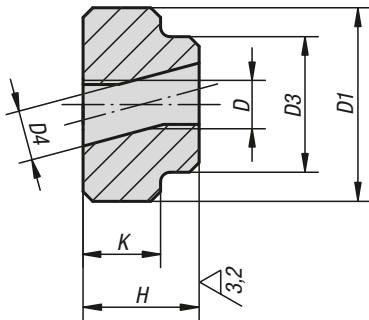


Knurled nuts quick-acting

steel or stainless steel



Quick-acting knurled nuts are mainly used in applications where no high clamping pressures are required.

Tilt the nut to slide on, then straighten it to engage the threads.

Material:

High carbon steel or stainless steel 1.4404.

Version:

Steel tempered and black oxidised.

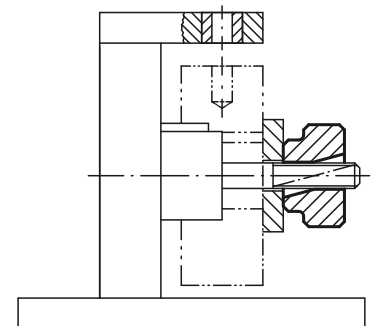
Stainless steel bright.

Sample order:

K0139.08

Drawing reference:

X: The stud should be several mm longer than height "H"



KIPP Knurled nuts quick-acting steel or stainless steel

Order No. high carbon steel	Order No. stainless steel	D	D1	D3	D4	H	K
K0139.04	K0139.104	M4	16	14	4,2	12	8
K0139.05	K0139.105	M5	20	14	5,2	12	8
K0139.06	K0139.106	M6	24	16	6,2	14	10
K0139.08	K0139.108	M8	30	20	8,2	17	12
K0139.10	K0139.110	M10	36	28	10,3	20	14
K0139.12	K0139.112	M12	40	32	12,3	24	16