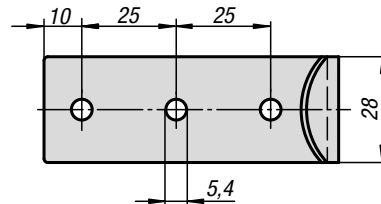
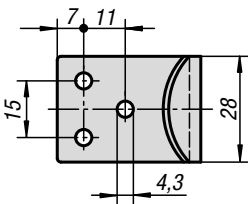
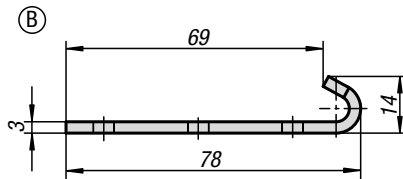
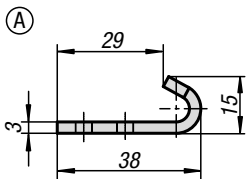
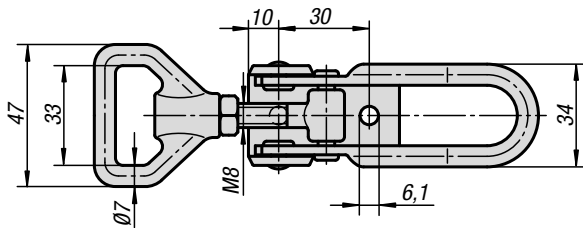
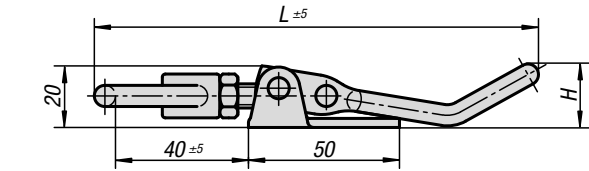


Latches adjustable



Material:

Steel or stainless steel 1.4301.

Version:

Steel trivalent blue passivated.
Stainless steel bright.

Sample order:

Latch K0051.1611451
Catch plate K0051.9143381

Note:

Adjustable latches are secure locking systems for industrial applications. By exceeding the dead center they resist vibration.

After the bail engages with the catch plate, the parts to be locked can be drawn together by up to 15 mm by pushing the lever down. To compensate for tolerances or to create enough tension the bail length can be adjusted using the M8 spindle.

The latches can be screwed down or riveted. We recommend using countersunk screws for fastening the components.

Order the required catch plate version separately.

The retaining force F1 applies to the latch, not the catch plate.

On request:

Lockable version with padlock bracket.

Applications:

We recommend using countersunk screws for fastening the components.

KIPP Latches adjustable

Order No. steel	Order No. stainless steel	H	L	Retaining force F1 N
K0051.1611451	K0051.1611452	21	145	6500
K0051.1611681	K0051.1611682	36	168	6500

KIPP Catch plates

Order No. steel	Order No. stainless steel	Form
K0051.9143381	K0051.9143382	A
K0051.9254781	K0051.9254782	B