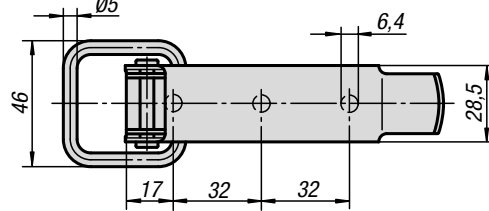
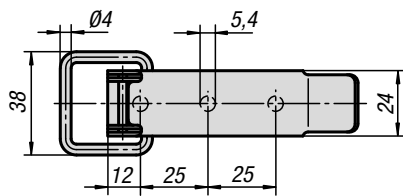
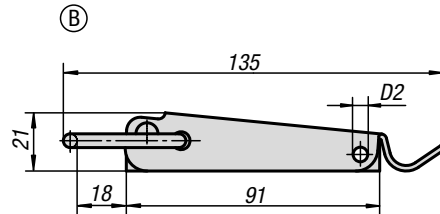
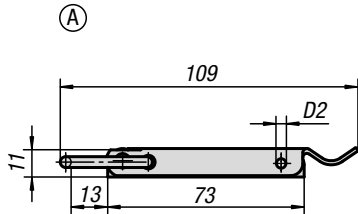


Latches

with draw bail



Material:
Steel or stainless steel 1.4301.

Version:
Steel trivalent blue passivated.
Stainless steel bright.

Sample order:
Latch K0045.1541091
Catch plate K0045.9143371

Note:
Latches with draw bail for securing and locking hatches, container lids, machine cladding etc. By exceeding the dead centre they resist vibration. The fastening force is applied by drawing on the bail.

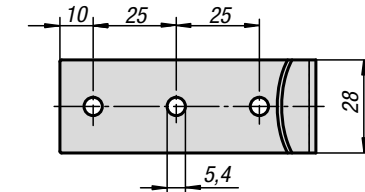
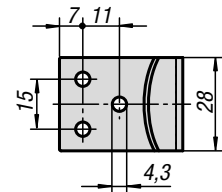
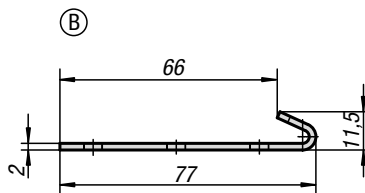
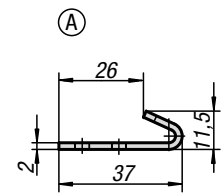
The hole D2 can be used to secure against unintentional opening or attaching an official lead seal.

The latches can be screwed down or riveted.

Order catch plates separately.

The retaining force F1 applies to the latch, not the catch plate.

On request:
Lockable version with padlock bracket.



KIPP Latches with draw bail

Order No. steel	Order No. stainless steel	Form	D2	Retaining force F1 N
K0045.1541091	K0045.1541092	A	3,2	2000
K0045.2641351	K0045.2641352	B	3,8	3000

KIPP Catch plates

Order No. steel	Order No. stainless steel	Form
K0045.9143371	K0045.9143372	A
K0045.9254771	K0045.9254772	B