

Latches

with draw bail



Material:

Steel or stainless steel 1.4301.

Version:

Steel trivalent blue passivated.
Stainless steel bright.

Sample order:

Latch K0044.1330571

Catch plate K0044.9136281

Note:

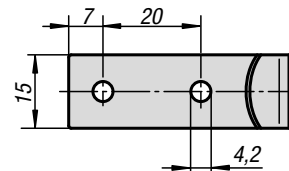
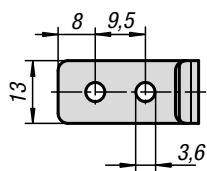
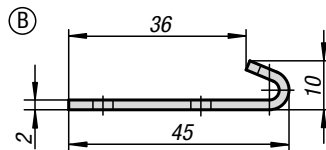
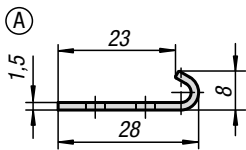
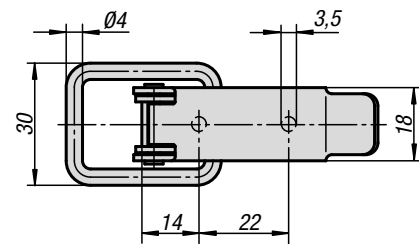
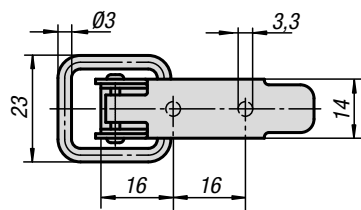
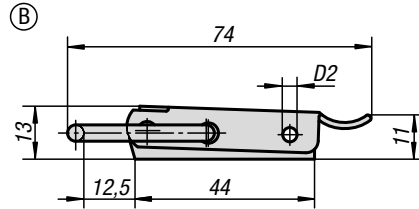
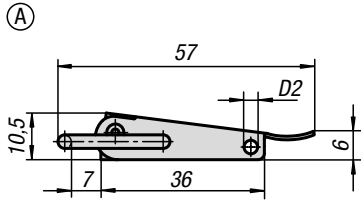
Latches with draw bail for securing and locking hatches, container lids, machine cladding etc. By exceeding the dead centre they resist vibration. The fastening force is applied by drawing on the bail.

The hole D2 can be used to secure against unintentional opening or attaching an official lead seal.

The latches can be screwed down or riveted.

Order catch plates separately.

The retaining force F1 applies to the latch, not the catch plate.



KIPP Latches with draw bail

Order No. steel	Order No. stainless steel	Form	D2	Retaining force F1 N
K0044.1330571	K0044.1330572	A	2,8	1000
K0044.2350741	K0044.2350742	B	3,2	2000

KIPP Catch plates

Order No. steel	Order No. stainless steel	Form
K0044.9136281	K0044.9136282	A
K0044.9242451	K0044.9242452	B