

## Wedge clamps

jaw face smooth or serrated



**Material:**

Wedge and jaw segments carbon steel.

**Version:**

Wedge and jaw segments hardened, black.

**Sample order:**

K0039.2208

**Note:**

The functioning principle make the wedge clamps ideal for series clamping. The wedge form can exert high clamping forces.

These wedge clamps can be mounted in grid holes or T-slots. Tightening the socket screw moves the wedge down and the jaws out pressing the workpieces against the fixtures fixed stops.

The wedge has a slightly elongated hole allowing for movement to compensate for tolerances.

**Spread width:**

M8 = ±0.5 mm

M10 = ±1.0 mm

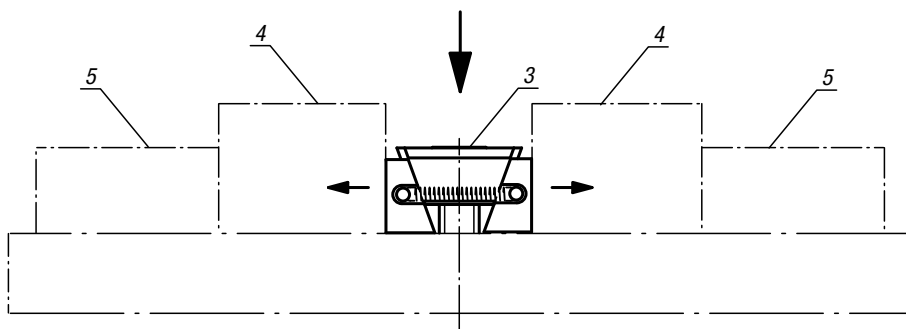
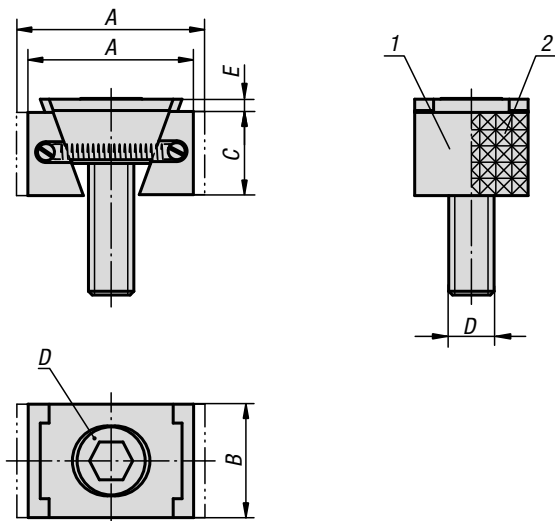
M12 = ±1.0 mm

M16 = ±1.5 mm

**Drawing reference:**

D) DIN 6912 cap screw

- 1) Jaw face smooth
- 2) Jaw face serrated
- 3) Wedge clamps
- 4) Workpiece
- 5) Fixed stop



### KIPP Wedge clamps, narrow version

Order No. smooth	Order No. serrated	A min.	A max.	B	C	D	E	Clamping force max. kN	Tightening torque max. Nm
K0039.1108	K0039.2108	30,5	33,5	24	15	M8X25	2	15	25
K0039.1110	K0039.2110	32	37	28	19	M10X25	3,5	20	49
K0039.1112	K0039.2112	44	49,5	30	22	M12X40	3,5	30	85
K0039.1116	K0039.2116	55	62	40	29	M16X60	4	50	210

### KIPP Wedge clamps, wide version

Order No. smooth	Order No. serrated	A min.	A max.	B	C	D	E	Clamping force max. kN	Tightening torque max. Nm
K0039.1208	K0039.2208	30,5	33,5	30	15	M8X25	2	15	25
K0039.1210	K0039.2210	32	37	38	19	M10X25	3,5	20	49
K0039.1212	K0039.2212	44	49,5	48	22	M12X40	3,5	30	85
K0039.1216	K0039.2216	55	62	48	29	M16X60	4	50	210