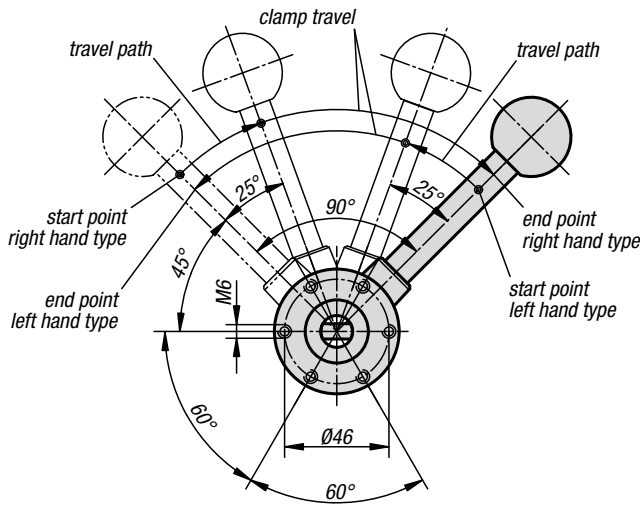


# Clamping element "actima"



View from below



**Material:**  
 Steel.  
 Housing thermoplastic.  
 Ball knob thermoset PF 31.  
 Accessories steel.

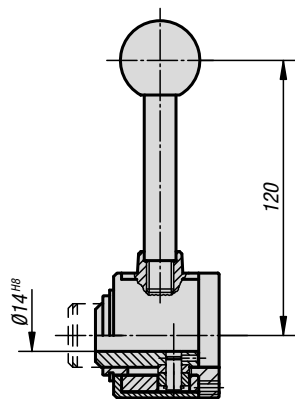
**Version:**  
 Black oxidised.  
 Housing black.  
 Ball knob, red.  
 Accessories black oxidised.

**Sample order:**  
 K0020.10

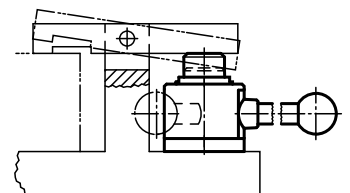
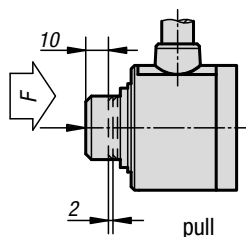
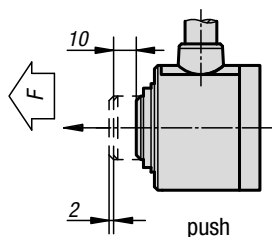
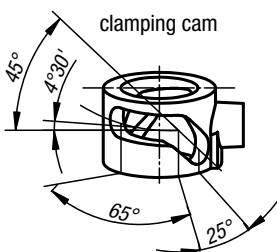
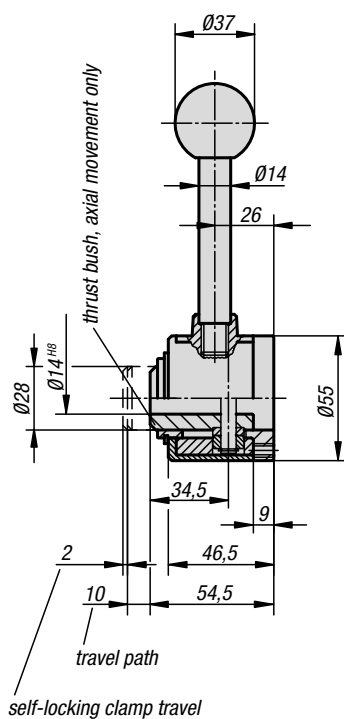
**Note:**

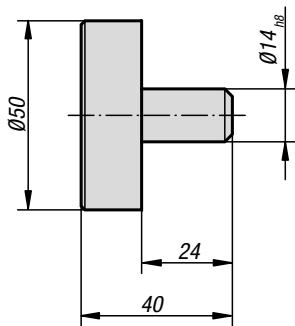
The travel path is 10 mm. Self-locking occurs in any position within only 2 mm of clamp travel, so workpieces with tolerances of up to 1.5 mm can be safely clamped. The Actima clamping device can be mounted in any horizontal or vertical position. Standard parts enable further applications and are available as optional accessories. All parts of the cam system subject to heavy loads are case-hardened (thrust sleeve and accessories only if specified). The maximum permissible clamping force is approximately 4905 N.

drilled through

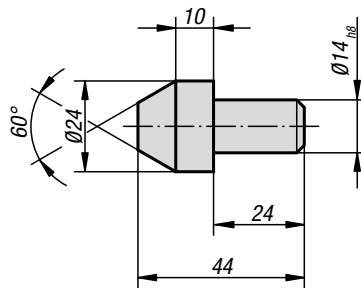


with transverse axis in bore

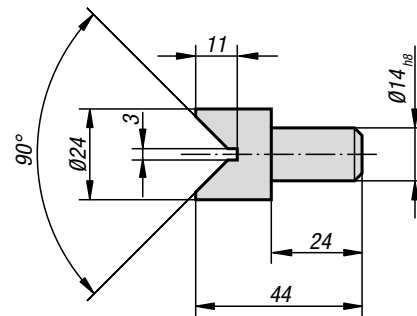




plate



conus



prism

### KIPP "actima" clamping element with transverse axis in bore

Order No.	Version
K0020.10	right-hand / thrust
K0020.15	right-hand / pull
K0020.20	left-hand / thrust
K0020.25	left-hand / pull

### KIPP "actima" clamping element with drilled through bore

Order No.	Version
K0020.30	right-hand / thrust
K0020.35	right-hand / pull
K0020.40	left-hand / thrust
K0020.45	left-hand / pull

### KIPP "actima" accessories

Order No.	Item
K0020.02	Plate
K0020.03	Conus
K0020.04	Prism