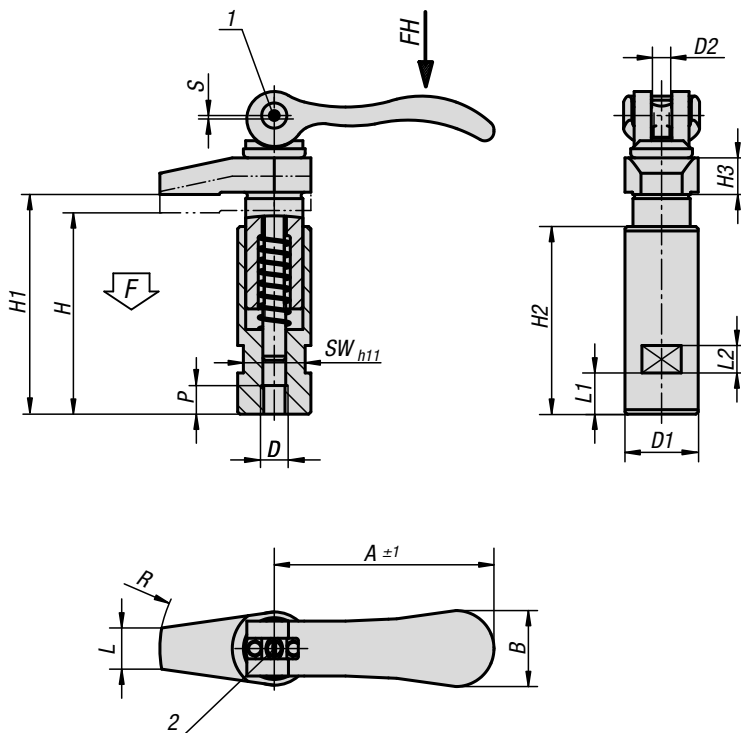


Hook clamps

with collar and cam lever



Material:

Body and hook, high-carbon steel.
 Handles, cast aluminium EN AC-46200.
 Thrust washer, fibreglass reinforced plastic PA 66 GF 35-X.
 Hinge pin, stud and washer stainless steel 1.4305.

Version:

Body and hook tempered and black oxidised.
 Handles, black powder-coated.
 Thrust washer black.
 Hinge pin, stud and washer bright.

Sample order:

K0013.106

Note:

Ideal for clamping where the parts are to be inserted from above as the hook can be swivelled out of the way.

The exact clamping height is set by the fine thread on the stud using a screwdriver. This setting can be secured with the locking screw. The length S corresponds to the cam travel.

Drawing reference:

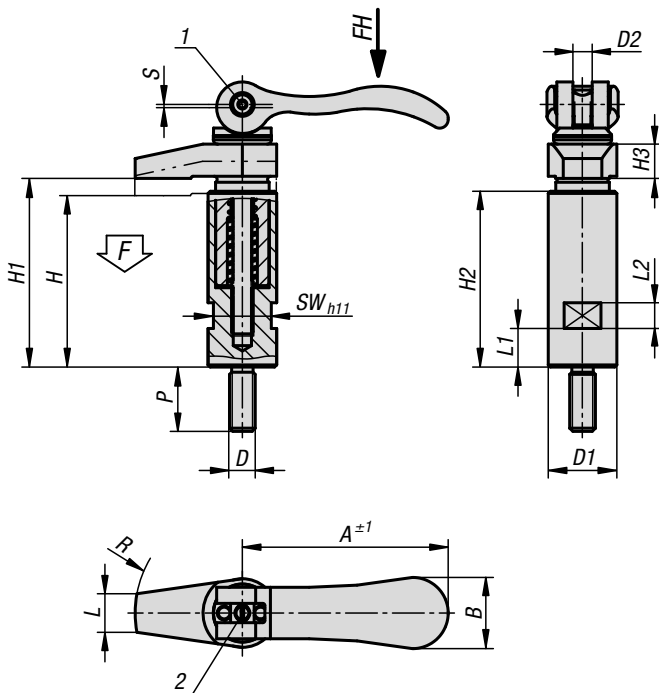
- 1) Locking screw for pin
- 2) Screw for fine adjustment of lever

KIPP Hook clamps with collar and cam lever

Order No.	D	D1	D2	H	H1	H2	H3	L	L1	L2	A	B	P	R	SW	Travel S	F kN	Hand force FH N
K0013.106	M6	20	M6x0,5	56	60	53	10	9	9	8	70,4	21,5	8	30	17	1,2	4	120
K0013.108	M8	20	M6x0,5	56	60	53	10	9	9	8	70,4	21,5	8	30	17	1,2	4	120
K0013.110	M10	25	M8x0,75	72	79	67	12	12	13	10	96	33,3	10	40	19	1,5	8	350
K0013.112	M12	32	M8x0,75	88	96	82	15	18	18	12	96	33,3	12	50	27	1,5	8	350

Hook clamps

with collar and cam lever



Material:

Body and hook, high-carbon steel.
 Handles, cast aluminium EN AC-46200.
 Thrust washer, fibreglass reinforced plastic PA 66 GF 35-X.
 Hinge pin, stud and washer stainless steel 1.4305.

Version:

Body and hook tempered and black oxidised.
 Handles, black powder-coated.
 Thrust washer black.
 Hinge pin, stud and washer bright.

Sample order:

K0013.208

Note:

Ideal for clamping where the parts are to be inserted from above as the hook can be swivelled out of the way.

The exact clamping height is set by the fine thread on the stud using a screwdriver. This setting can be secured with the locking screw. The length S corresponds to the cam travel.

Drawing reference:

- 1) Locking screw for pin
- 2) Screw for fine adjustment of lever

KIPP Hook clamps with collar and cam lever

Order No.	D	D1	D2	H	H1	H2	H3	L	L1	L2	A	B	P	R	SW	Travel S	F kN	Hand force FH N
K0013.206	M6	20	M6x0,5	56	60	53	10	9	9	8	70,4	21,5	20	30	17	1,2	4	120
K0013.208	M8	20	M6x0,5	56	60	53	10	9	9	8	70,4	21,5	20	30	17	1,2	4	120
K0013.210	M10	25	M8x0,75	72	79	67	12	12	13	10	96	33,3	25	40	19	1,5	8	350
K0013.212	M12	32	M8x0,75	88	96	82	18	18	18	12	96	33,3	30	50	27	1,5	8	350

Hook clamps

with collar



Material:

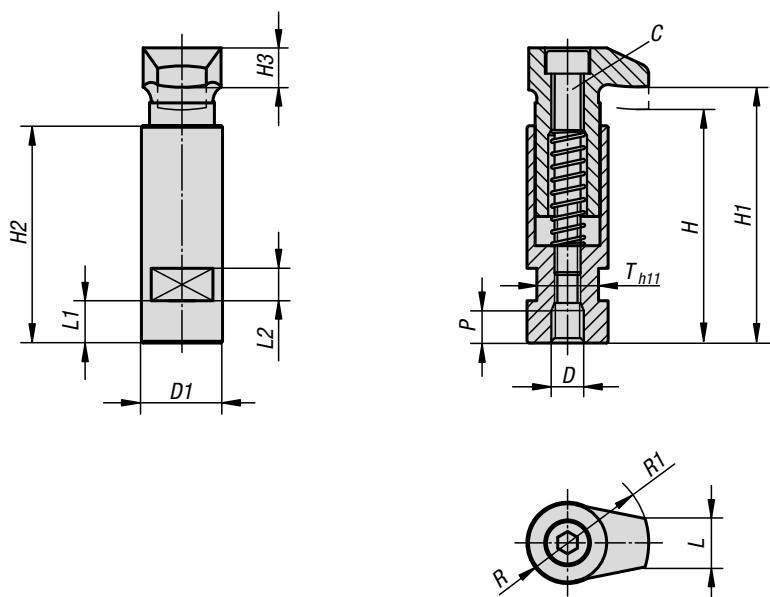
Carbon steel.

Version:

Tempered and black oxidised.

Sample order:

K0013.06

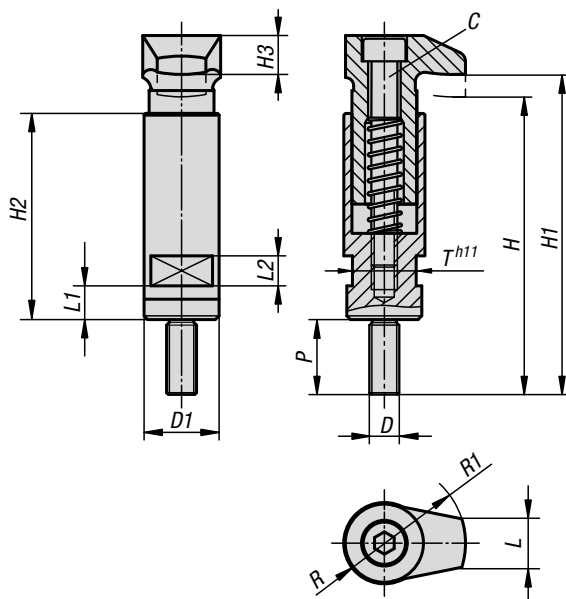


KIPP Hook clamps with collar

Order No.	C	D	D1	H	H1	H2	H3	L	L1	L2	P	R	R1	T	Clamping force kN
K0013.06	M6	M6	20	56	60	53	10	11	9	8	8	9	20	17	4,82
K0013.08	M6	M8	20	56	60	53	10	11	9	8	8	9	20	17	8,77
K0013.10	M8	M10	25	72	79	67	12	15	13	10	10	12	25	19	13,9
K0013.12	M10	M12	32	88	96	82	16	17	18	12	12	14	32	27	20,2
K0013.16	M12	M16	40	109	118	102	20	20	22	12	16	18	40	32	37,8

Hook clamps

with collar



Material:

Carbon steel.

Version:

Tempered and black oxidised.

Sample order:

K0013.708

KIPP Hook clamps with collar

Order No.	C	D	D1	H	H1	H2	H3	L	L1	L2	P	R	R1	T	Clamping force kN
K0013.706	M6	M6	20	56	60	53	10	11	9	8	20	9	20	17	4,82
K0013.708	M6	M8	20	56	60	53	10	11	9	8	20	9	20	17	8,77
K0013.710	M8	M10	25	72	79	67	12	15	13	10	25	12	25	19	13,9
K0013.712	M10	M12	32	88	96	82	16	17	18	12	30	14	32	27	20,2
K0013.716	M12	M16	40	109	118	102	20	20	22	12	30	18	40	32	37,8

Hook clamp

with collar and adjustable handle with clamping force intensifier



Components are clamped using the hook clamps with collar and clamping force intensifier by manually operating the clamping lever.

With clamping levers with integrated clamp force intensifier, the retaining force can be increased by up to 75% compared with standard clamping levers. In addition, less effort is required when clamping and releasing.

When clamping, the retaining force is increased by the integrated axial needle bearing which creates very low surface friction on the fixed contact surface. The hardened stopper discs are designed for high retaining forces and the load rating of the bearing ensures long service life.

Material:

Body and hook clamp, carbon steel.
Grip die-cast zinc acc. to DIN EN 12844.
Clamping force intensifier steel parts grade 5.8

Version:

Body and hook clamp tempered and black oxidised.
Grip plastic coated.
Clamping force intensifier steel parts black oxidised.
Axial needle bearing with hardened and ground stopper discs.

Sample order:

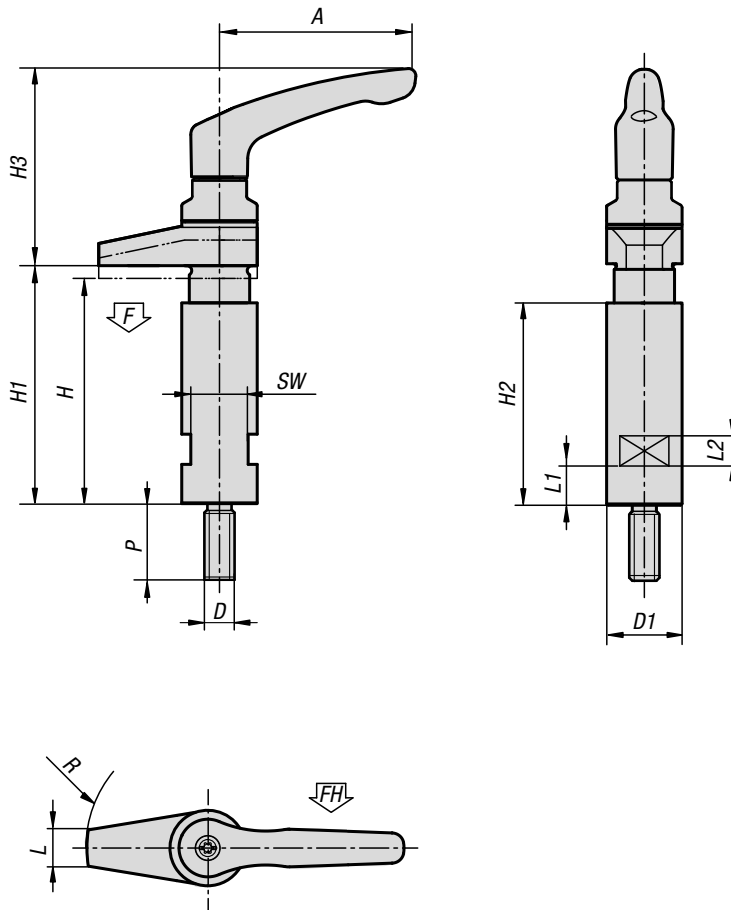
K0013.410

Method of operation:

In the default position, the handle is engaged with the threaded insert through a toothed ring. By lifting the handle, it can be repositioned and re-engaged in the toothed ring by spring force.

On request:

Other grip colours.

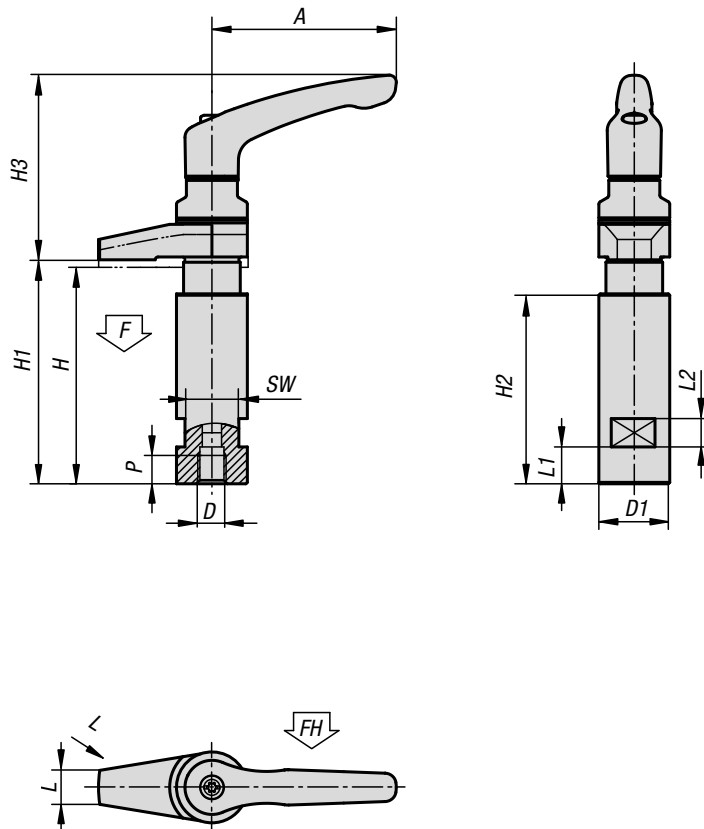


KIPP Hook clamp with collar and clamping lever with clamping force intensifier

Order No.	D	P	D1	H	H1	H3	L2	L1	A	H2	SW	R	L	F kN	Hand force FH N
K0013.410	M10	25	25	72	79	65,1	10	13	65	67	19	40	12	6,1	130
K0013.412	M12	30	32	88	96	80,9	12	18	80	82	27	50	18	8,7	170

Hook clamp

with collar and clamping lever with clamping force intensifier



Components are clamped using the hook clamp with collar and clamping force intensifier by manually operating the clamping lever.

With clamping levers with integrated clamp force intensifier, the retaining force can be increased by up to 75% compared with standard clamping levers. In addition, less effort is required when clamping and releasing.

When clamping, the retaining force is increased by the integrated axial needle bearing which creates very low surface friction on the fixed contact surface. The hardened stopper discs are designed for high retaining forces and the load rating of the bearing ensures long service life.

Material:

Body and hook clamp, carbon steel.
Grip die-cast zinc acc. to DIN EN 12844.
Clamping force intensifier steel parts grade 5.8

Version:

Body and hook clamp tempered and black oxidised.
Grip plastic coated.
Clamping force intensifier steel parts black oxidised.
Axial needle bearing with hardened and ground stopper discs.

Sample order:

K0013.310

Method of operation:

In the default position, the handle is engaged with the threaded insert through a toothed ring. By lifting the handle, it can be repositioned and re-engaged in the toothed ring by spring force.

On request:

Other grip colours.

KIPP Hook clamp with collar and clamping lever with clamping force intensifier

Order No.	D	P	D1	H	H1	H3	L2	L1	A	H2	SW	R	L	F kN	Hand force FH N
K0013.310	M10	10	25	72	79	65,1	10	13	65	67	19	40	12	6,1	130
K0013.312	M12	12	32	88	96	80,9	12	18	80	82	27	50	18	8,7	170

Hook clamp with collar

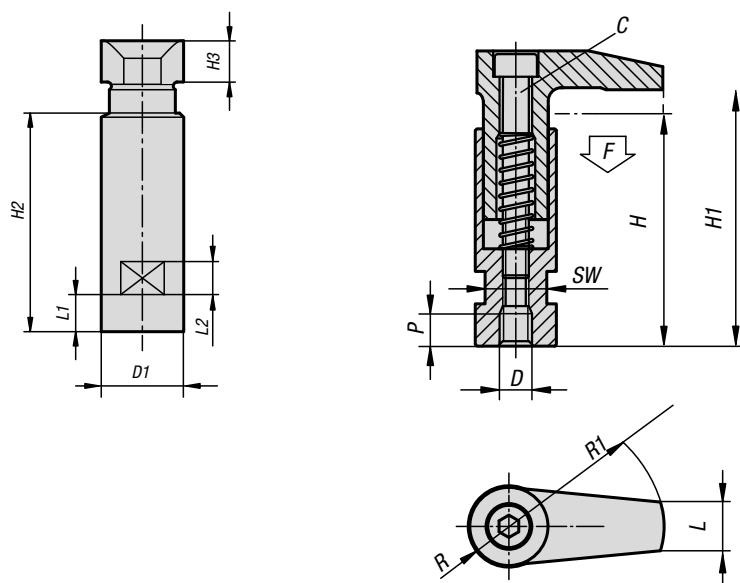
with long clamping claw



Material:
Carbon steel.

Version:
Tempered and black oxidised.

Sample order:
K0013.510

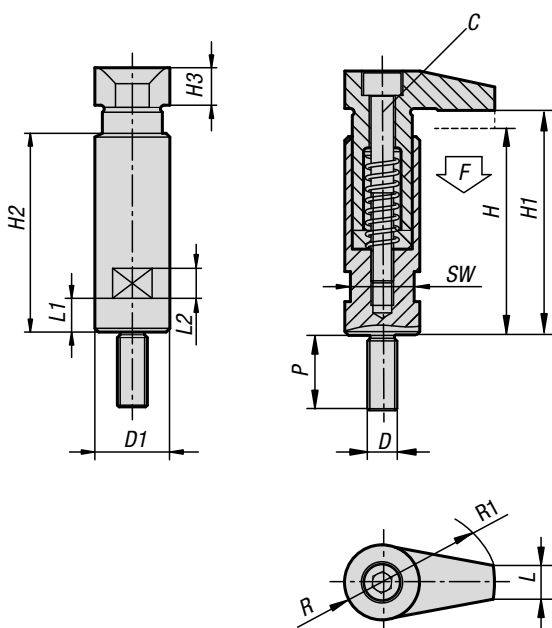


KIPP Hook clamp with collar with long clamping claw

Order No.	C	D	D1	H	H1	H2	H3	L	L1	L2	P	R	R1	SW	Clamping force kN
K0013.506	M6	M6	20	56	60	53	10,5	9	11	8	8	10	30	17	4,5
K0013.508	M6	M8	20	56	60	53	10,5	9	11	8	8	10	30	17	4,5
K0013.510	M8	M10	25	72	79	67	12,5	12	15	10	10	12,5	40	19	6,5
K0013.512	M10	M12	32	88	96	82	16,5	18	17	12	12	16,5	50	27	11,8

Hook clamp with collar

with long clamping claw



Material:
Carbon steel.

Version:
Tempered and black oxidised.

Sample order:
K0013.608

KIPP Hook clamp with collar with long clamping claw

Order No.	C	D	D1	H	H1	H2	H3	L	L1	L2	P	R	R1	SW	Clamping force kN
K0013.606	M6	M6	20	56	60	53	10,5	9	11	8	20	10	30	17	4,5
K0013.608	M6	M8	20	56	60	53	10,5	9	11	8	20	10	30	17	4,5
K0013.610	M8	M10	25	72	79	67	12,5	12	15	10	25	12,5	40	19	6,5
K0013.612	M10	M12	32	88	96	82	16,5	18	17	12	30	16,5	50	27	11,8