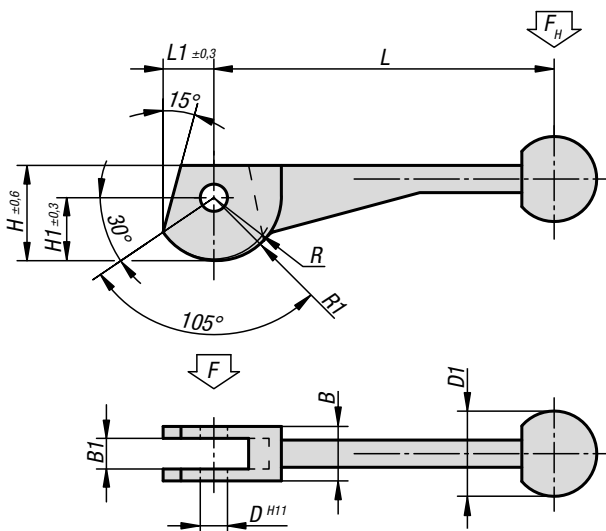


## Cam levers

double



**Material:**

Carbon steel 1.7220.

Ball grip plastic.

**Version:**

Tempered and black oxidised.

**Sample order:**

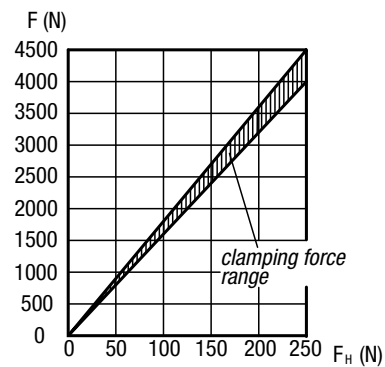
K0009.12

**Note:**

Suitable hinge pin, see K0007.

The cam lever is an eccentric lever that moves along a logarithmic spiral. Its clamping properties are even over the entire contact surface of the cam.

Force diagram



**KIPP Cam levers, double**

Order No.	L	L1	B	B1	H	H1	D	D1	R	R1
K0009.08	104±2	14,9	16	9	28,2	18,7	8	25	17,2	19,2
K0009.10	123±2	18,6	20	12	34,8	23,3	10	30	21,5	24
K0009.12	146±3	24,3	25	14	43,8	30,3	12	30	28	31,2