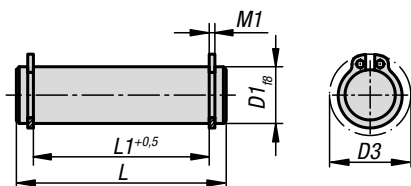


## Hinge pins steel or stainless steel



**Material:**

Steel or stainless steel.

**Version:**

Steel version:  
tempered to 1000 - 1200 N/mm<sup>2</sup>, black oxidised.  
Stainless steel version:  
tempered to 900 - 1050 N/mm<sup>2</sup>, bright.

**Sample order:**

K0007.08

**Note for ordering:**

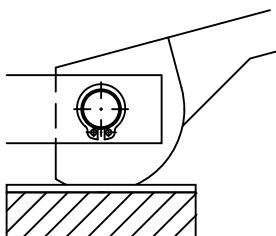
2 matching DIN 471 circlips are supplied.

**Note:**

For use with:  
Cam levers K0008 and K0009.  
Eye bolts K0396 and K1418.  
Clevis K0397.

**Advantages:**

Ground OD.  
High dimensional accuracy.  
Suitable for use as spare part.  
Matching circlips included.



### KIPP Hinge pins steel or stainless steel

Order No. steel	Order No. stainless steel	D1	L	L1	M1	D3
K0007.05	K0007.105	5	18	13	0,7	10,7
K0007.06	K0007.106	6	22	17	0,8	12,2
K0007.081	K0007.108	8	20	16	0,9	15,2
K0007.082	K0007.1081	8	27	21	0,9	15,2
K0007.08	K0007.1082	8	30	25	0,9	15,2
K0007.101	K0007.110	10	25	20	1,1	17,6
K0007.102	K0007.1101	10	35	29	1,1	17,6
K0007.10	K0007.1102	10	37	32	1,1	17,6
K0007.121	K0007.112	12	31	25	1,1	19,6
K0007.122	K0007.1121	12	37	31	1,1	19,6
K0007.12	K0007.1122	12	46	40	1,1	19,6
K0007.14	K0007.114	14	44	37	1,1	22
K0007.16	K0007.116	16	48	41	1,1	24,4
K0007.18	K0007.118	18	58	51	1,3	26,8