

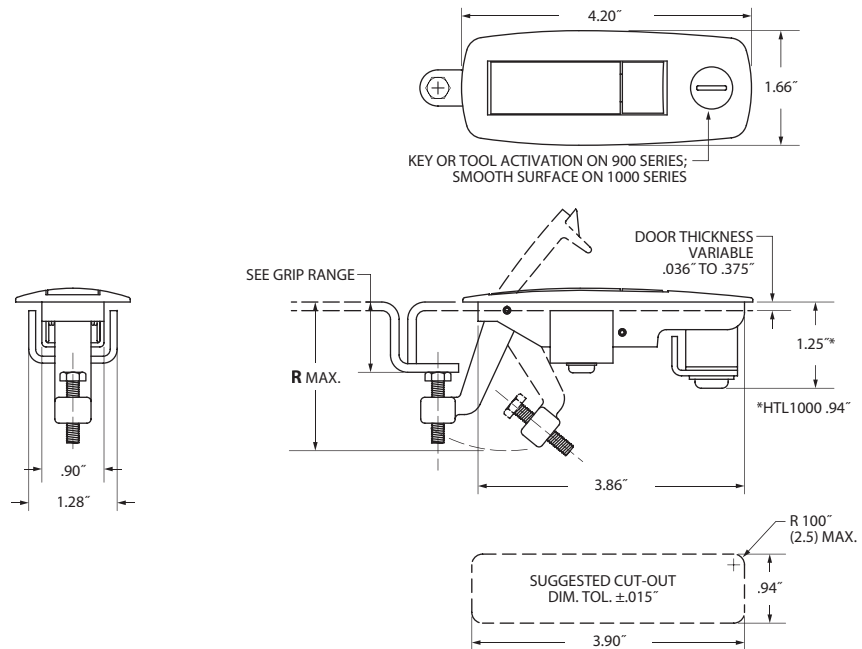
Southco® C2 Compression Latch Lever, Flush, Locking



The 900 & 1000 Series flush lever latches feature snag-proof triggers and contemporary rounded, flush styling that blends to your enclosure. Standard finish black powder-coat and chrome. Custom colors in quantity. Applications range from electronics and machine control centers to office modules. You will find extra security with the key-lockable 900 series. The 1000 comes without a lock but takes the same cutout.

Benefits

- Quick access for serviceability.
- Large trigger for gloved operations.
- Rugged all-metal construction.
- Fail-safe double torsion spring.
- Designed to mount in metal, wood or plastic doors or panels.
- Bolt offsets accommodate a wide range of frame thicknesses.
- Self-locking adjustment screw designed into the bolt for variations in grip range.
- Latch installs with one self-tapping screw and mounting bracket (supplied).
- Maximum load 150 lbs.

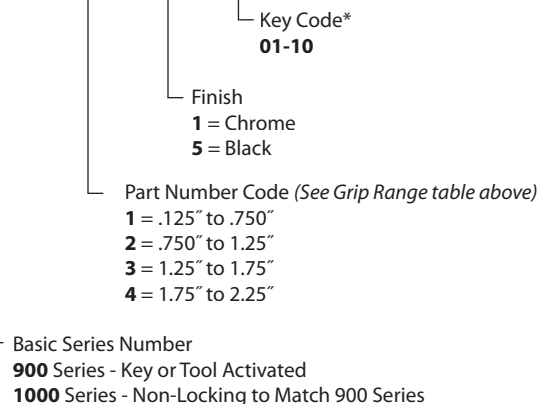


Grip Range

Grip Range	R Dim.	Part Number Code
.125" to .750"	1.81"	1
.750" to 1.25"	2.18"	2
1.25" to 1.75"	2.60"	3
1.75" to 2.25"	3.05"	4

Part Numbers

C2-100X-1Z C2-90X-2Z-KK



Note:

* 2 keys on a ring supplied with locking version, keyed alike, WN01 - WN10 key codes. For additional key codes, contact Southco.

All dimensions on this page are in inches.

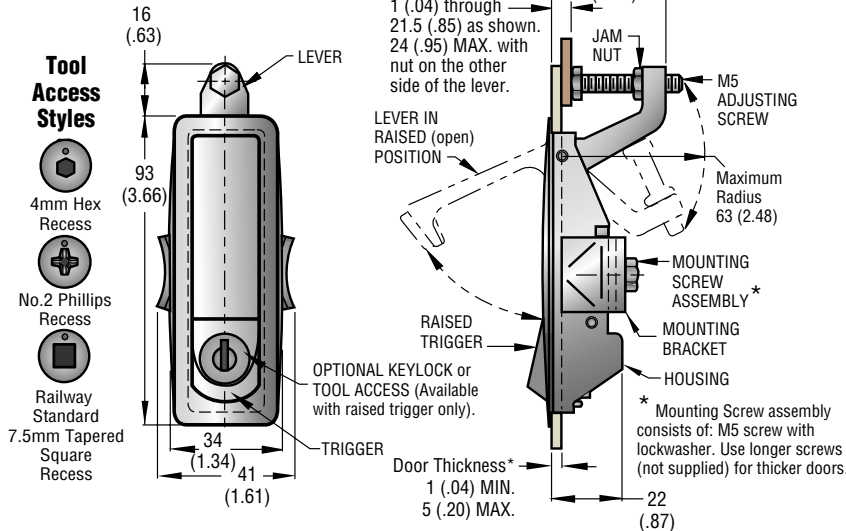
Southco® Compression Latches

Lever Latch

- Low profile when latched
- Single-hole installation
- Raised or flush trigger button
- Easy grip adjustment
- Keylocking version available
- 4 access styles
- Latch and handle in one assembly

Raised Trigger

(Shown with optional Keylock).

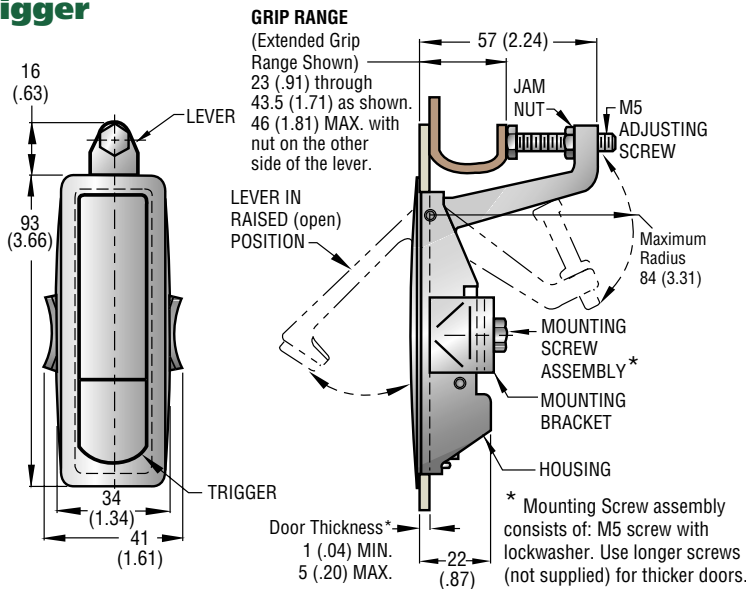


Shown with optional keylock.

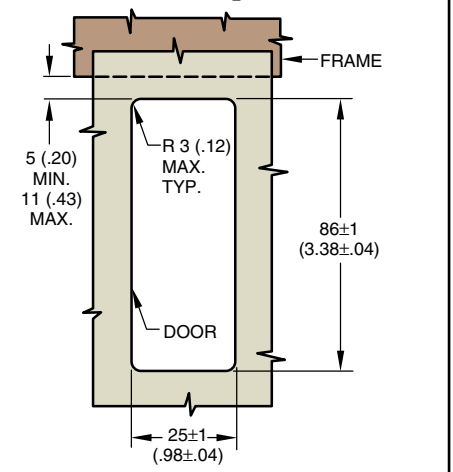
Material and Finish

HOUSING, LEVER and TRIGGER: Die-cast zinc, black powder coated or textured chrome.
SPRINGS: 302 Stainless steel, natural.
ROLL PINS: 420 Stainless steel, natural.
SCREWS and JAM NUT: Steel, zinc alloy plate, bright chromate, plus sealer.
LOCK WASHER: Spring steel, zinc alloy plated.
BRACKET: 1010 Steel, zinc alloy plate, bright chromate, plus sealer.
TOOL ACCESS/LOCK PLUG: Die-cast zinc, chrome plated or black powder coated.
KEYS: Brass, nickel plated.

Flush Trigger



Panel Preparation



Product Strength Guidelines

(To assist in your product selection; samples are available for your evaluation.)
 Maximum recommended pawl load (in closed position): 1100 N (250 lbs.)
 Recommended pawl load (for actuation): 200N (45 lbs.)

Locks are keyed alike.
 Different key codes are available.

millimeter (inch)
 millimeter (inch)

Dimensions without tolerances are for reference only.

TRIGGER STYLE		PART NUMBERS			
		GRIP RANGE 1 (.04) to 24 (.95)		GRIP RANGE 23 (.91) to 46 (1.81)	
		Matte Black Coat	Textured Chrome Finish	Matte Black Coat	Textured Chrome Finish
Raised Trigger	Railway Standard	C2-99-217-125-3 •	—	C2-99-217-145-3 •	—
	No. 2 Phillips	C2-32-105-3 •	C2-32-101-3 •	C2-33-105-3 •	C2-33-101-3 •
	4mm Hex Recess	C2-32-45-3 •	C2-32-41-3 •	C2-33-45-3 •	C2-33-41-3 •
	Keylock*	C2-32-25-3 •	C2-32-21-3 •	C2-33-25-3 •	C2-33-21-3 •
	Without Keylock	C2-32-15-3 •	C2-32-11-3 •	C2-33-15-3 •	C2-33-11-3 •
Flush Trigger		C2-32-35-3 •	C2-32-31-3 •	C2-33-35-3 •	C2-33-31-3 •

Layer packed: 40 piece minimum, sold in multiples of 40.
 For individually packaged latches remove last digit. Ex: C2-32-15