

# DZUS® Nylatch® NY Panel Fastener Quarter-Turn



## Typical Applications:

- Fiber Optics
- Appliances
- Computers

## Benefits:

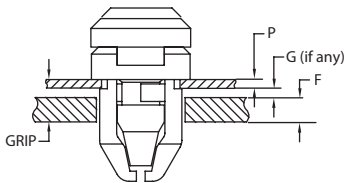
- Low total installed cost.
- Ideal for high-speed assembly operations.
- Non-corrosive, non-conductive materials.
- Tamper-proof or easy grip head styles standard.
- Simultaneous installation in both the removable and fixed panels.
- Accommodates misalignment  $\pm .012$  inch.
- UL 94 V-2 rated materials.

## Material and Color

Polycarbonate or Polysulfone;  
Black, White or Natural  
UL94-V2 rated

## Fastener Length Selection

1. Calculate the Grip of your application. Grip is comprised of the removable panel thickness (P), support panel thickness (F) and any gap (G) caused panel lip, washer or gasket used between panels; see Figure 1.



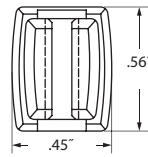
**Figure 1:**  
**Grip = P + G + F**

2. Using the Length Selection table, at right, find your grip. Verify your removable panel thickness does not exceed the P Max. value listed. If it does not, select the correct Length.
3. Finish your part number by selecting material/color combination.

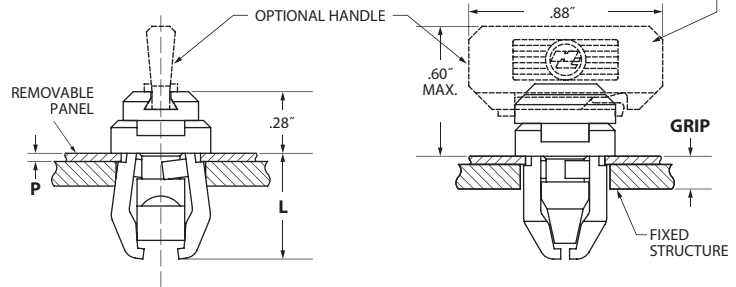
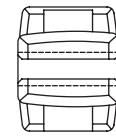
**Note:** Wing option available for applications in need of manual operation.

All dimensions on this page are in inches.

## Latched Position



## Unlatched Position

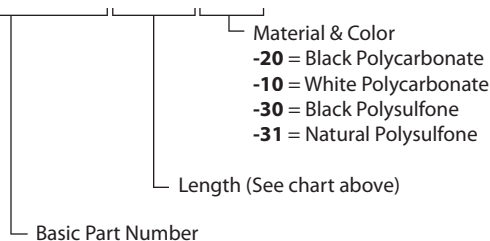


## Length Selection

Grip	P Max.	Length	L Max.
.059" to .148"	.042"	-1	.50"
.076" to .165"	.057"	-2	.51"
.118" to .207"	.098"	-3	.55"
.182" to .271"	.162"	-4	.62"

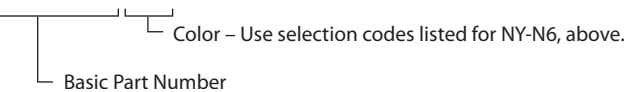
## Nylatch Quarter-Turn Part Numbers:

### NY-N6-XX-YY



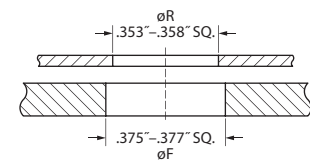
## Optional Wing Handle for N6 Fasteners:

### NY-H6-YY



## Panel Preparation

For the Nylatch Quarter-Turn Panel Fastener, panel prep involves the stamping of a square hole in both the removable and support panels. The hole in the removable panel ( $\phi R$ ) is slightly smaller than the one in the support panel ( $\phi F$ ) to allow for fastener captivation.



**Notes:**  
 Internal corner radii: .015" maximum.  
 Float: .024" two directions.