



LR Series

LR Series Detent Pins are the cost effective answer for Commercial/Industrial applications requiring conventional tolerances in manufacturing and installation.

Shear Strength

Shear Strength is a function of shank diameter and material. Use the matrix below to locate a material/size combination that provides the shear strength required by your application.

Shank Dia.	Calculated Single Shear ¹ (in pounds)		
	Material Code		
	D	E	F
3/16	1283	2555	1118
1/4	2299	4585	2005
5/16	3611	7203	3151
3/8	5216	10411	4555
7/16	7117	14208	6216
1/2	9312	18594	8134
9/16	11801	22568	10311
5/8	14485	29132	12745
3/4	21036	42027	18387
7/8	28665	57279	25059
1	37473	74886	32762

Note:

1. Shear values base on 60% of ultimate tensile strength of material

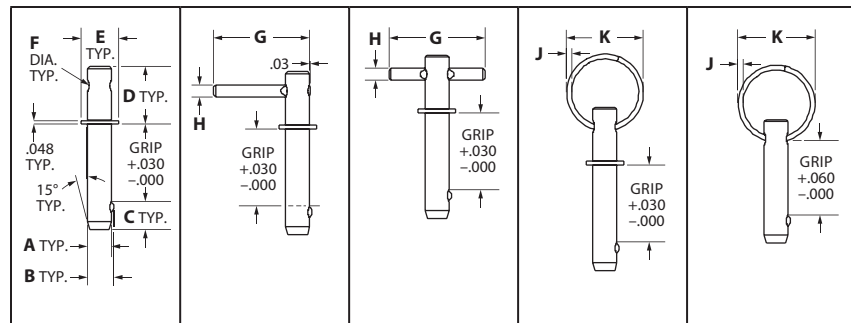
Material and Finish

D: 303 CRES per AMS 5640; All CRES parts passivated per ASTM A96

E: 4130 Steel per AMS-QQ-5-763; All steel parts cadmium plated per AMS-QQ-P-416

F: 12L14 & 1215 Steel per ASTM A108; All steel parts cadmium plated per AMS-QQ-P-416

Styles



Handle Style Codes

X	L	T	R	N
----------	----------	----------	----------	----------

Dimensions

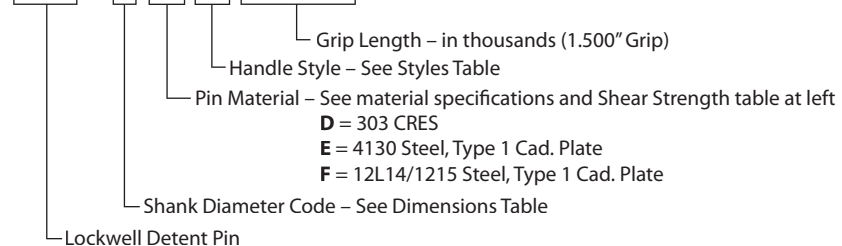
Shank DIA.		Dimensions									
Size	Code ¹	A +.0000 -.003	B ±.010	C Max.	D +.020 -.030	E Max.	F DIA.	G	H DIA.	J DIA.	K ±.060
3/16	3	.188	.200	.200	.750	.339	.096	1.25	.093	.062	.875
1/4	4	.250	.286	.312	.750	.401	.128	1.25	.125	.062	.875
5/16	5	.313	.358	.375	.750	.464	.159	1.25	.156	.062	.875
3/8	6	.375	.426	.500	.750	.589	.159	1.75	.156	.062	.875
7/16	7	.438	.496	.562	1.000	.652	.159	1.75	.156	.062	.875
1/2	8	.500	.570	.625	1.062	.714	.191	2.00	.188	.105	1.040
9/16	9	.563	.642	.687	1.062	.776	.191	2.00	.188	.105	1.040
5/8	10	.625	.710	.750	1.125	.870	.253	2.25	.250	.105	1.040
3/4	12	.750	.856	.937	1.375	.994	.253	2.25	.250	.105	1.290
7/8	14	.875	.996	1.000	1.500	1.009	.379	2.50	.375	.105	1.290
1	16	1.00	1.140	1.250	1.500	1.244	.379	2.50	.375	.105	1.290

Note:

1. Use to complete part number.

Lockwell Industrial/Commercial Part Numbers

LR - * DT 1500



All dimensions on this page are in inches.