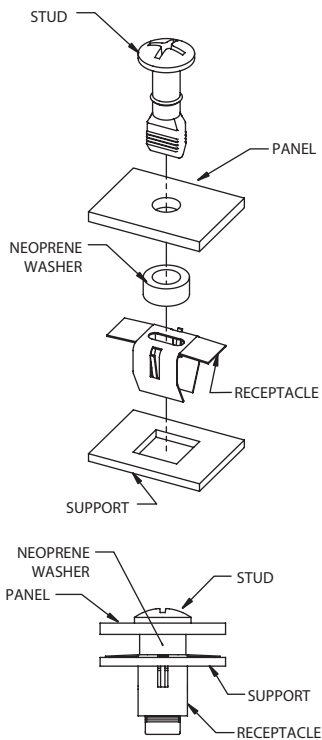




Pilot Assembly



Pilot studs and receptacles require no tooling for installation. After panel preparation all components install by hand.

All dimensions on this page are in inches.

Pilot Fasteners

Pilot Fasteners offer push-to-lock closing action with 1/4-turn screwdriver opening. In the locked position it exerts a vibration-resistant clamping force on its panel. Pilot operation is simple and has a crisp "feel" to guide the user. As Pilot Fasteners engage for locking, internal ridges on the receptacle's spring blade turn the stud's notched face against the blade so it must ratchet through. When turned to open, the smooth tapered face of the stud meets the receptacle blades and the stud is released.

Step 1 – Select Receptacle

Both receptacles provide the same strength values. Use the Standard Receptacle in normal cases. The Lateral Tolerance Receptacle eases stud alignment. Choose either to fit support panel thickness.

Step 2 – Select Stud

A choice of two stud styles is offered; Standard studs and Self-Ejecting. To complete the stud assembly a separate retainer or washer must be specified at time of order.

Receptacles



Standard



Lateral Tolerance

Studs



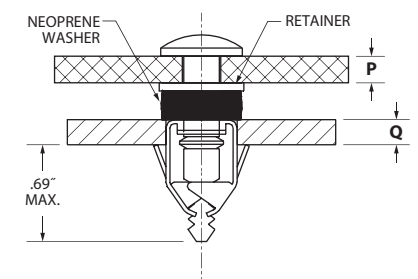
Standard



Self-Ejecting

Optional Assembly: Press Panel to Close

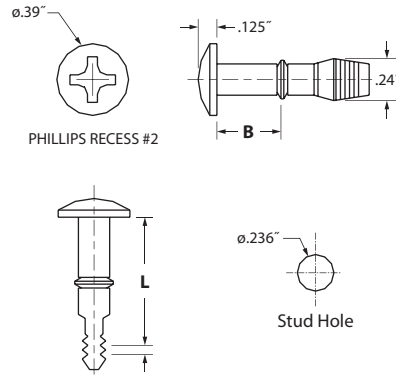
Press Panel feature is achieved by the addition of a plastic press-on retainer to a special stud. Standard Receptacles and neoprene washers may still be used. Pressure applied to the panel near the stud will latch the assembly.



Standard Studs

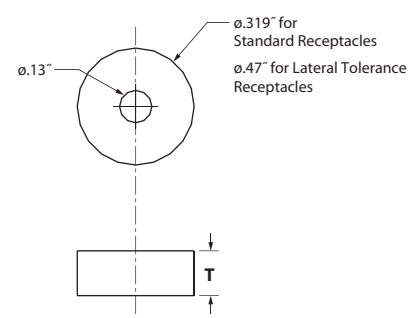


Stud



Material: Case hardened steel
Finish: Zinc plate with black or bright chromate

Washer



Material: Neoprene rubber
Finish: Black

Stud Selection

1. Select stud and washer part numbers from the tables at right based on your panel thickness (P).
2. Typical washer compression .040" to .080".

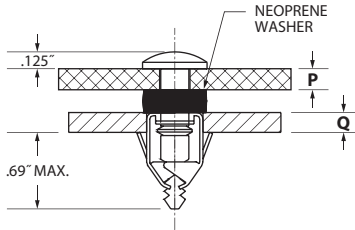


Figure 1:
P = Panel Thickness
Q = Support Thickness

Stud & Washer Selection

P Panel Thickness	Stud Dim. L	Stud Dim. B	T Washer Thickness	Part Numbers			
				Stud		Washer	
				Black Chromate	Bright Chromate	For Std. Recep.	For Lat. Tol. Recep.
.050" to .069"	.63"	.28"	.16"	D7-265-716-191	D7-265-716-190	D7-275-040-400	D7-275-140-400
.070" to .089"	.63"	.28"	.14"	D7-265-716-191	D7-265-716-190	D7-275-035-400	D7-275-135-400
.090" to .109"	.70"	.35"	.20"	D7-265-718-191	D7-265-718-190	D7-275-050-400	D7-275-150-400
.110" to .129"	.70"	.35"	.18"	D7-265-718-191	D7-265-718-190	D7-275-045-400	D7-275-145-400
.130" to .149"	.70"	.35"	.16"	D7-265-718-191	D7-265-718-190	D7-275-040-400	D7-275-140-400
.150" to .169"	.70"	.35"	.14"	D7-265-718-191	D7-265-718-190	D7-275-035-400	D7-275-135-400
.170" to .189"	.79"	.43"	.20"	D7-265-720-191	D7-265-720-190	D7-275-050-400	D7-275-150-400

Self-Ejecting Studs

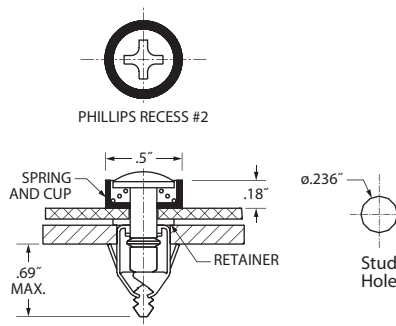


The ejecting assembly locks into the receptacle with a push on the stud. The eject spring provides locking tension that allows greater material thickness tolerance. A quarter turn releases the assembly. The ejecting stud assembly has a reduced gap between panel and support and can be used with either the square hole or lateral tolerance receptacles.

Material & Finish

- Stud:** Case hardened steel with zinc plate with black or bright chromate
- Cup:** Black thermoplastic
- Spring:** Stainless steel
- Retainer:** Acetal copolymer

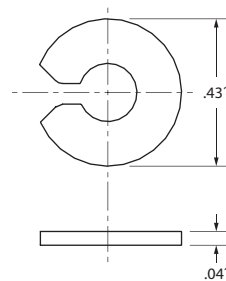
Stud



Material: Case hardened steel.
Finish: Zinc plate with black or clear chromate.

Panel Thickness	Part Numbers	
	Black	Bright
.020" to .120"	D7-290-718-191	D7-290-718-190
.100" to .200"	D7-290-720-191	D7-290-720-190

Retainer (Required)



Material: Acetal copolymer.
Finish: Natural.

Part Number	D7-275-203-040
--------------------	----------------

All dimensions on this page are in inches.



Pilot receptacles are made of spring steel and easily snap into support panels from its top. The Lateral Tolerance type provides approximately $\pm .200''$ lateral tolerance to stud position.

Material & Finish

Material: Spring steel
Finish: Zinc phosphate

Typical Assembly

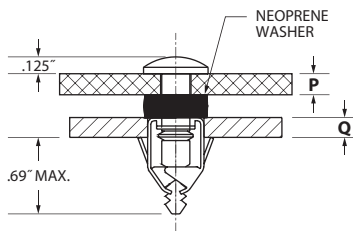
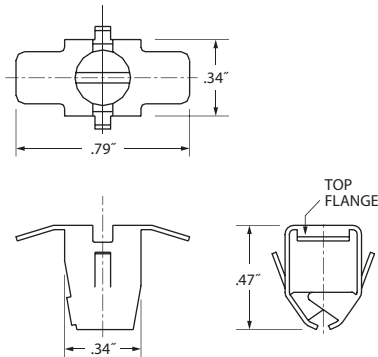


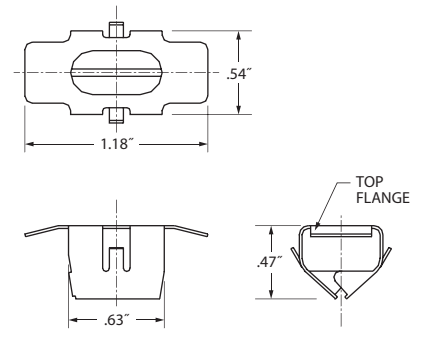
Figure 1:
P = Panel Thickness
Q = Support Thickness

All dimensions on this page are in inches.

Standard



Lateral Tolerance

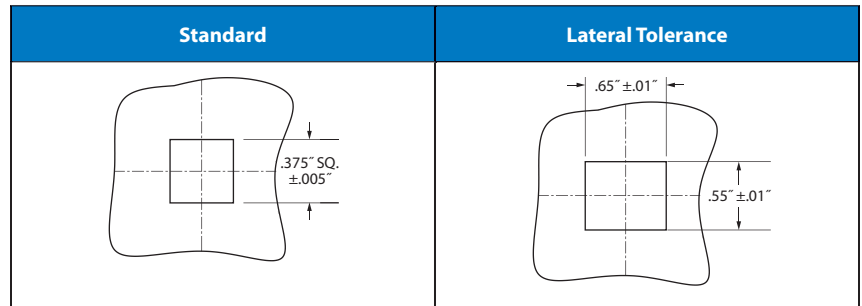


Part Numbers

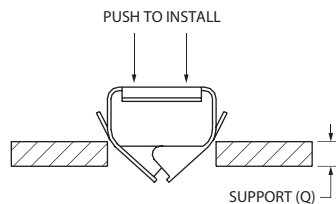
Select either Standard or Lateral Tolerance receptacle part numbers based on your application's Support Thickness (Q).

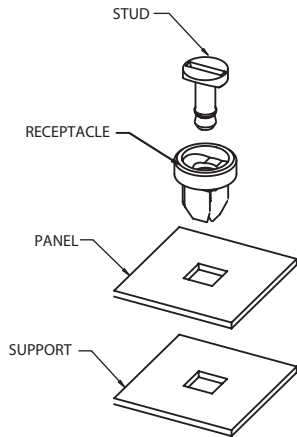
Support Thickness (Q)	Part Numbers	
	Standard	Lateral Tolerance
.025" to .049"	D7-285-101-161	D7-285-201-161
.050" to .069"	D7-285-102-161	D7-285-202-161
.070" to .089"	D7-285-103-161	D7-285-203-161
.090" to .109"	—	D7-285-204-161
.110" to .129"	—	D7-285-205-161

Panel Preparation



Installation





Arrow Plastic Fasteners consist of a stud and a receptacle assembly which is self-retained in a square hole in the fastened panel. Arrow Fasteners close by pushing the stud inward with finger pressure and open with a quarter-turn of the stud. Arrow Fasteners pass through a square hole in the support material, where its four prongs lock as they are expanded by the stud.

Performance

- Designed Maximum Axial Load:** 11 lbs.
- Ultimate Axial Load:** 56 lbs.
- Designed Maximum Shear Strength:** 28 lbs.
- Ultimate Shear Strength:** 140 lbs.
- Flammability Rating:** UL 94 HB.
- ASTM E-162 Flame Spread Index:** 130.

Material & Color

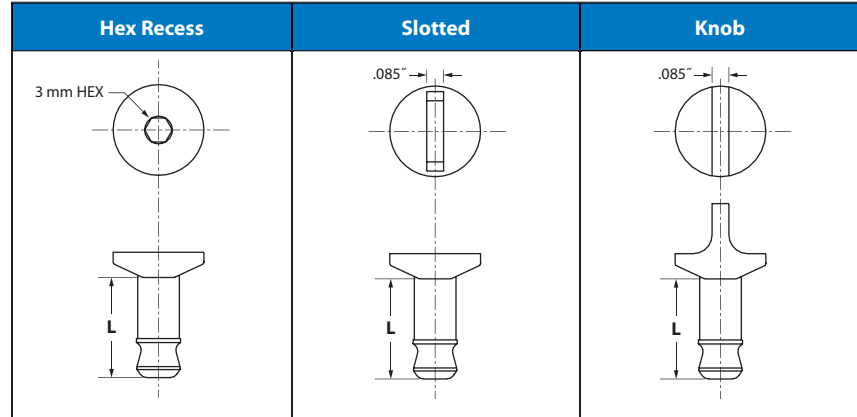
Material: Acetal copolymer resin
Color: Black

All dimensions on this page are in inches.

Fastener Selection

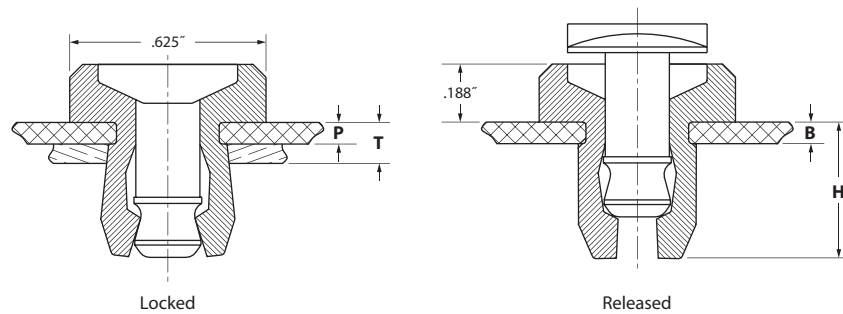
1. Choose the receptacle that fits your panel thickness "P".
2. Verify that the combined thickness of your panel and support "T" is within listed limits.
3. Choose a stud head style. Then select the part number, tabulated at bottom right, which corresponds to either the 200 or 201 series receptacle selected.

Studs



For Use With Receptacle Series	Head Style	L Dimension	Stud Part Number
200	Hex	.50"	D7-200-701-010
	Slotted	.50"	D7-200-711-010
	Knob	.50"	D7-200-721-010
201	Hex	.55"	D7-201-701-010
	Slotted	.55"	D7-201-711-010
	Knob	.55"	D7-201-721-010

Receptacles



Panel Thickness P	Panel Plus Support T	Receptacle Undercut B	Length Under Head H	Receptacle Part Number
.020" to .070"	.080" to .200"	.070"	.48"	D7-200-802-010
.071" to .125"	.135" to .250"	.125"	.54"	D7-201-802-010

Panel Preparation

- Top Panel:** .360" SQ. +.005".
- Bottom Panel:** .375" SQ. +.005".

Installation Procedure

Arrow studs and receptacles are packed separately. The receptacle is easily snapped into a square hole from the front panel and becomes self-retained. The stud is then pushed into the receptacle until it snaps in place.