

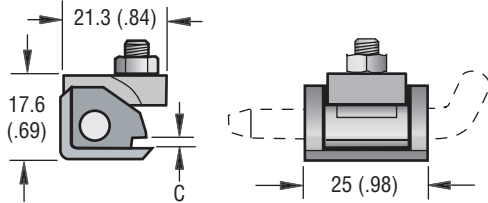
Southco® KH Hinge

Small Free Operating, Door Removal, Corner

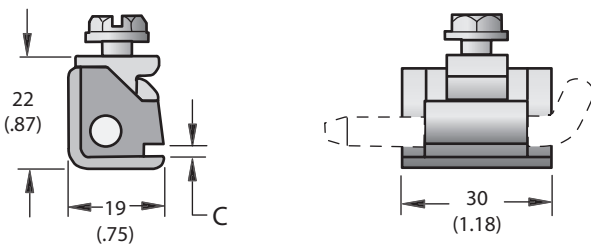
southco®

- Fits flush while allowing full 180 degree rotation
- Installs quickly with only one mounting screw
- Allows easy door removal for service and access
- Multiple material and finish options

T1 Nylon

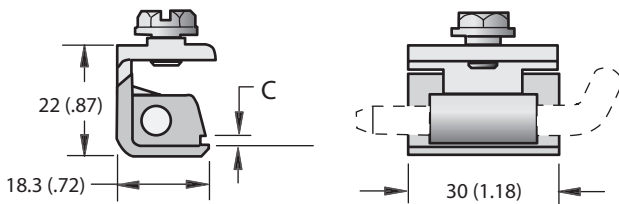


T1 Die Cast Zinc



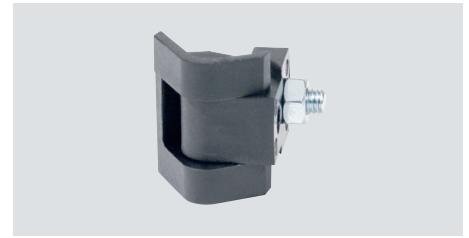
FINISH	PANEL THICKNESS	C	T1 HINGE SUB-ASSEMBLY PART NUMBER
Nylon	1.5 - 2 (.06 - .08)	2 (.08)	KH-22-T1-20
Chrome	1 - 1.2 (.04 - .05)	1.5 (.06)	KH-41-T1-38
Black	1 - 1.2 (.04 - .05)	1.5 (.06)	KH-41-T1-50
Chrome	1.5 - 2 (.06 - .08)	2.2 (.09)	KH-42-T1-38
Black	1.5 - 2 (.06 - .08)	2.2 (.09)	KH-42-T1-50

T2 Die Cast Zinc

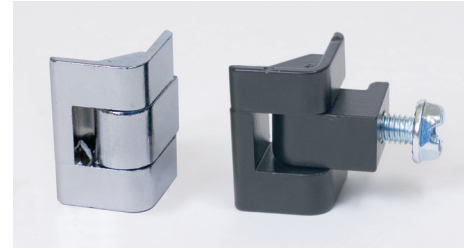


FINISH	PANEL THICKNESS	C	T2 HINGE SUB-ASSEMBLY PART NUMBER
Chrome	1 - 1.2 (.04 - .05)	1.5 (.06)	KH-41-T2-38
Black	1 - 1.2 (.04 - .05)	1.5 (.06)	KH-41-T2-50
Chrome	1.5 - 2 (.06 - .08)	2.2 (.09)	KH-42-T2-38
Black	1.5 - 2 (.06 - .08)	2.2 (.09)	KH-42-T2-50

T1 Nylon



T1 Die Cast Zinc



T2 Die Cast Zinc



Material & Finish

DOOR and FRAME LEAF: Die cast zinc, chrome plated or black powder coated or nylon, black
MOUNTING SCREW: Steel, zinc plated

Product Strength Guidelines

(To assist in your product selection; samples are available for your evaluation.)

Nylon

Radial Load

Maximum Static Load: 800 N (180 lbf)

Axial Load

Maximum Static Load: 800 N (180 lbf)

Die Cast Zinc

Radial Load

Maximum Static Load: 1200 N (270 lbf)

Axial Load

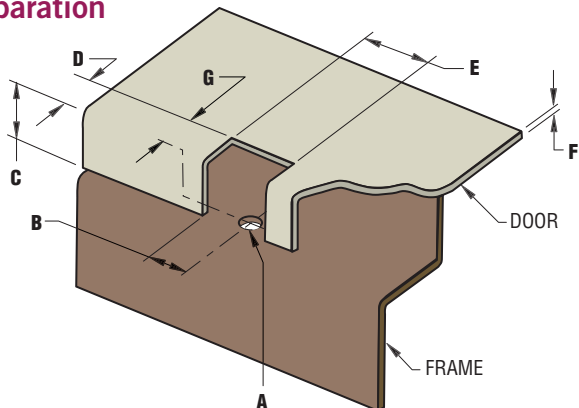
Maximum Static Load: 1200 N (270 lbf)

millimeter (inch)
millimeter
(inch)

Dimensions without tolerances are for reference only.

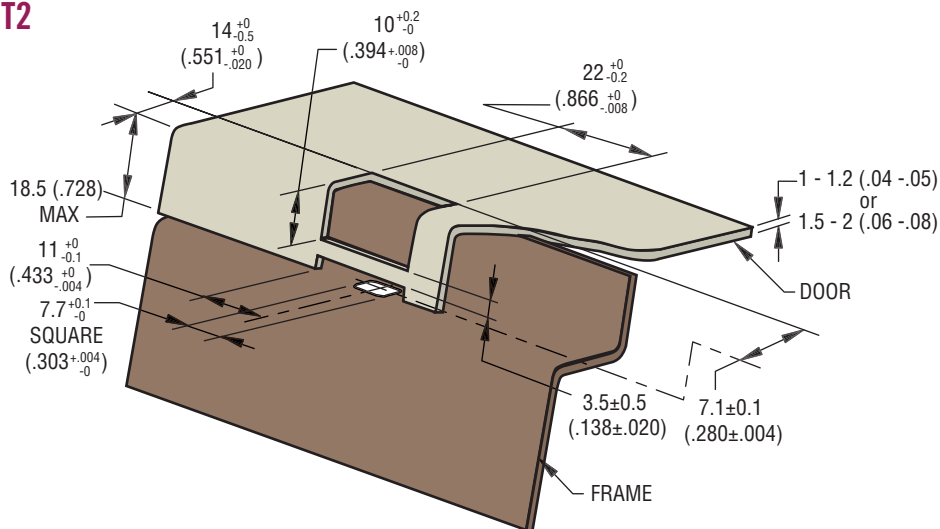
Panel Preparation

T1

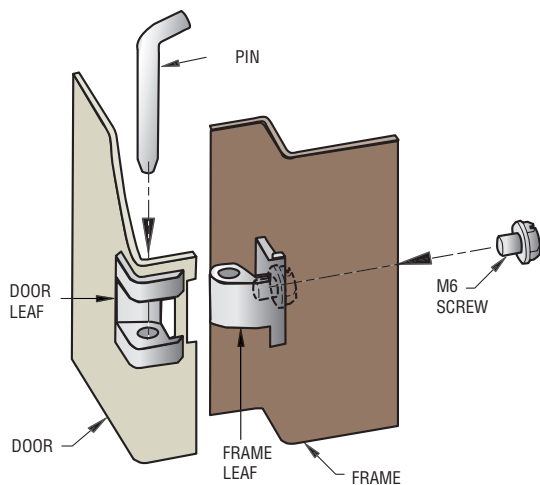


T1 PANEL PREPARATION DIMENSIONS							
MATERIAL	A	B	C	D	E	F	G
Nylon	$\text{Ø } 5.2 \pm 0.1$ (.205 ±.004)	$9^{+0}_{-0.25}$ (.354 ±.010)	$13^{+0}_{-0.2}$ (.512 ±.010)	$12.5^{+0.3}_{-0}$ (.492 ±.012)	$18^{+0}_{-0.5}$ (.709 ±.020)	1.5-2 (.06-.08)	1.05 ± 0.1 (.041 ±.004)
Die Cast Zinc	$\text{Ø } 6.2 \pm 0.1$ (.244 ±.004)	$10^{+0.25}_{-0}$ (.394 ±.010)	$18^{+0}_{-0.2}$ (.709 ±.010)	$13^{+0.3}_{-0}$ (.512 ±.012)	$20^{+0.5}_{-0}$ (.787 ±.020)	1-1.2 (.04-.05) 1.5-2 (.06-.08)	5.3 ± 0.1 (.209 ±.004)

T2



Installation



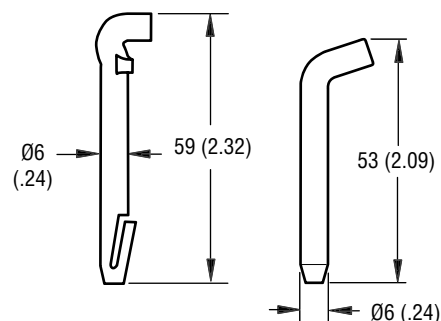
Material & Finish

PINS: Steel, Chrome plated or Acetal, white

PINS

Plastic

Steel



MATERIAL	PIN PART NUMBER
Acetal	KH-P
Steel	KH-G

Order Pins separately.

NOTE: Order 1 hinge sub-assembly and 1 pin for 1 complete hinge assembly.

millimeter (inch)
millimeter
(inch)

Dimensions without tolerances are for reference only.