

V7 Draw Latch

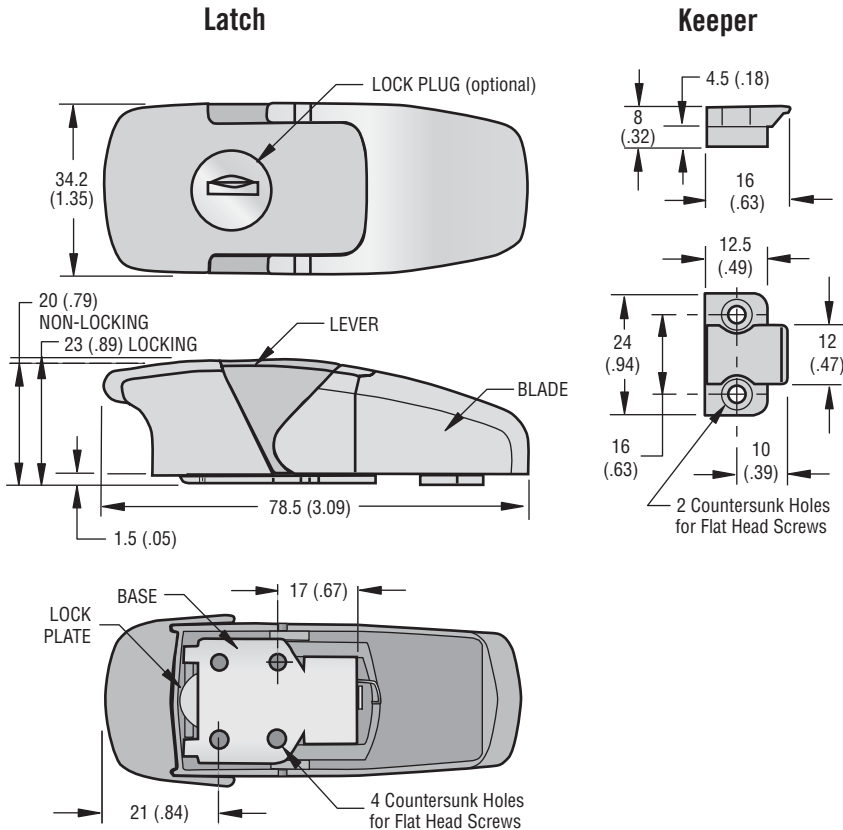
Over-center Series, Stainless steel

- Stainless steel construction to withstand corrosive environment
- Sleek, smooth low-profile design, locking and non-locking
- Locking version features 316 stainless lock plug
- Robust, riveted, tamper-resistant construction



Material and Finish
 BLADE, LEVER and KEEPER: CF-8M stainless steel, (nominal cast equivalent of 316 SS), electropolished
 BASE, SPRING, PINS, LOCK PLATE, LOCK PLUG with SHUTTER, HOUSING: Stainless steel, passivated
 SHUTTER and KEYS: Brass, Nickel plated

Product Strength Guidelines
 (To assist in your product selection; samples are available for your evaluation.)
 Maximum working load: 1200 N (270 lbs.)



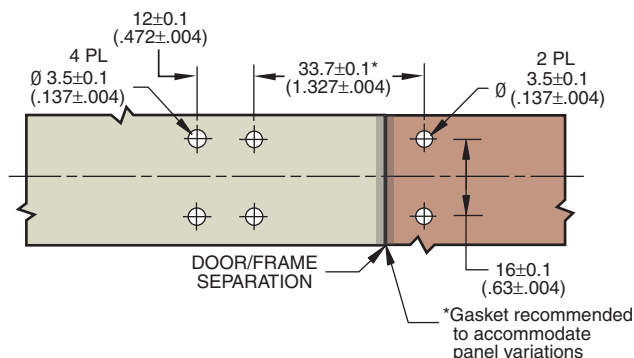
STYLE	PART NUMBER
Non-Locking	V7-20-101-24 •
Locking	V7-20-111-24 •

Note: Latch, Keeper and Keys (if required) are packaged together.

Panel Preparation

Installation

Install assembly with six M3 (No. 4) flat head screws (not supplied).



millimeter (inch)
 millimeter (inch)

Dimensions without tolerances are for reference only.

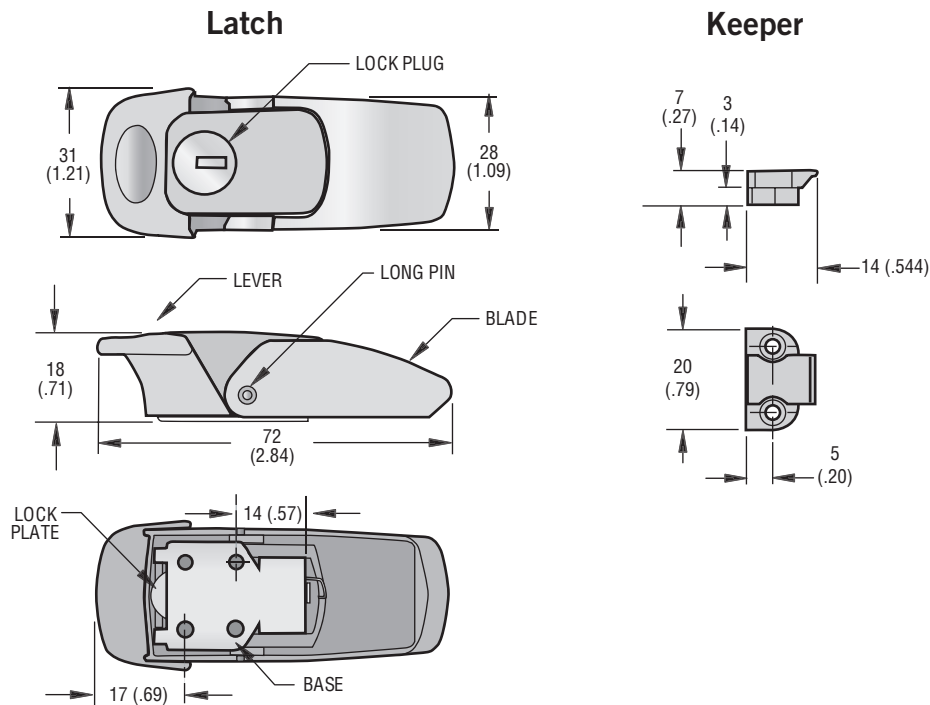
Southco® V7 Draw Latch

Over-Center, Mini

southco®

- Sleek low-profile design
- Robust, riveted, tamper-resistant construction
- Three finishes with optional lock

Draw Latches



Material and Finish

BLADE, LEVER and KEEPER: Die-cast zinc, bright chrome, satin chrome or black powder coated, see part number table
 BASE, SPRING, SHORT AND LONG PINS, and LOCK PLATE: Stainless steel, passivated
 LOCK PLUG with stainless steel
 SHUTTER: Die-cast zinc, chromate
 KEYS: (2) Die-cast zinc, nickel plated

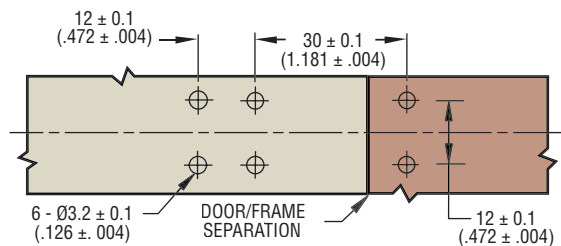
FINISH	VERSION	PART NUMBERS	
		LATCH ASSEMBLY WITH KEEPER	WITH DRAG FEATURE
BRIGHT CHROME	NON-LOCKING	V7-10-105-10	
	LOCKING*	V7-10-115-10	
SATIN CHROME	NON-LOCKING	V7-10-105-20	
	LOCKING*	V7-10-115-20	
BLACK POWDER COATED	NON-LOCKING	V7-10-105-50	
	LOCKING*	V7-10-115-50	

* Two flat keys on a ring are shipped with locking version, locks are keyed alike to S-110.

Panel Preparation

Installation

Install assembly with six M3 (No. 4) flat head screws (not supplied).



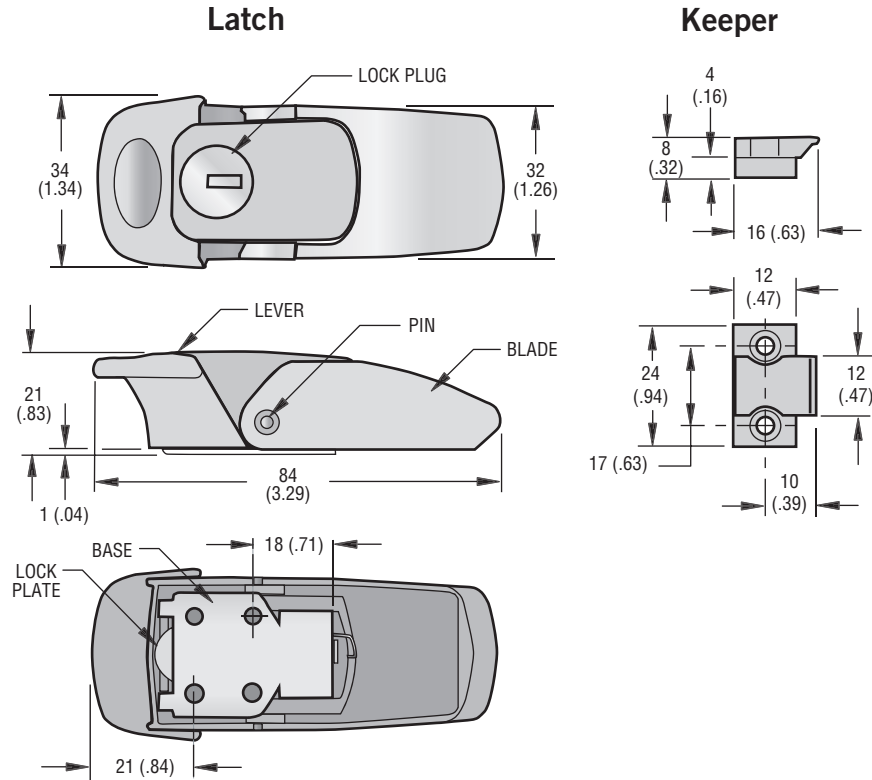
millimeter (inch)
 millimeter (inch)

Dimensions without tolerances are for reference only.

Southco® V7 Draw Latch Over-Center

southco®

- Sleek low-profile design
- Robust, riveted, tamper-resistant construction
- Three finishes with optional lock



Draw Latches

Material and Finish

BLADE, LEVER and KEEPER: Die-cast zinc, bright chrome, satin chrome or black powder coated
 BASE, SPRING, PINS, LOCK SCREWS and LOCK PLATE: Stainless steel, passivated
 LOCK PLUG with stainless steel
 CAP: Die-cast zinc, chromate dip
 KEYS: (2) Die-cast zinc, nickel plated

STYLE	PART NUMBERS		
	Bright Chrome	Satin Chrome	Black Powder Coated
Non-Locking	V7-20-101-10 •	V7-20-101-20 •	V7-20-101-50 •
Locking*	V7-20-111-10 •	V7-20-111-20 •	V7-20-111-50 •

Note: Latch, Keeper and Keys (if required) are packaged together.
 * Two flat keys on a ring are shipped with locking version, locks are keyed alike to S-110.

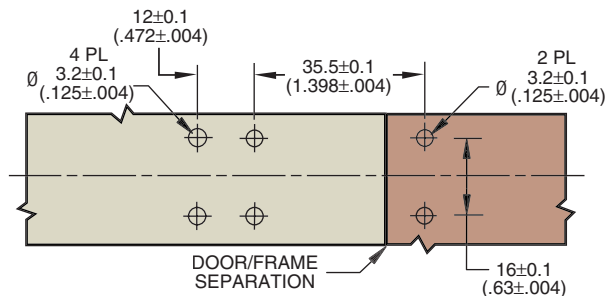
Product Strength Guidelines

(To assist in your product selection; samples are available for your evaluation.)
 Maximum working load: 1200 N (270 lbs.)
 Average ultimate load: 2183 N (491 lbs.)

Panel Preparation

Installation

Install assembly with six M3 (No. 4) flat head screws (not supplied).



millimeter (inch)
 millimeter
 (inch)

Dimensions without tolerances are for reference only.

Southco® V7 Draw Latch Over-Center, Chrome Plated



The V7- 40 is a fully enclosed chrome-plated Draw Latch designed for applications where appearance is of maximum importance.

Material & Finish

Material: Cold rolled steel

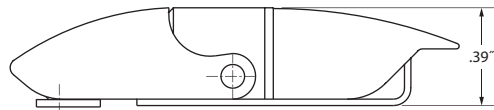
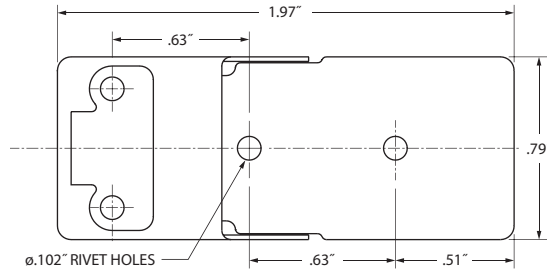
Lever & Latch Finish: Chrome plate

Base & Strike Finish: Bright zinc plate

Mechanical

Working Strength: 45 lbs.

Pull-up Ability: 0.315"

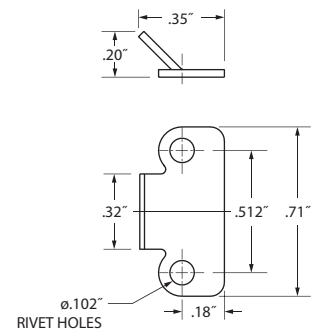


Note: Draw Latch and Keeper ordered separately.

Part Numbers

Description	Part Number
Latch	V7-40-201-10
Keeper	V7-47-201-10

Keeper



All dimensions on this page are in inches.