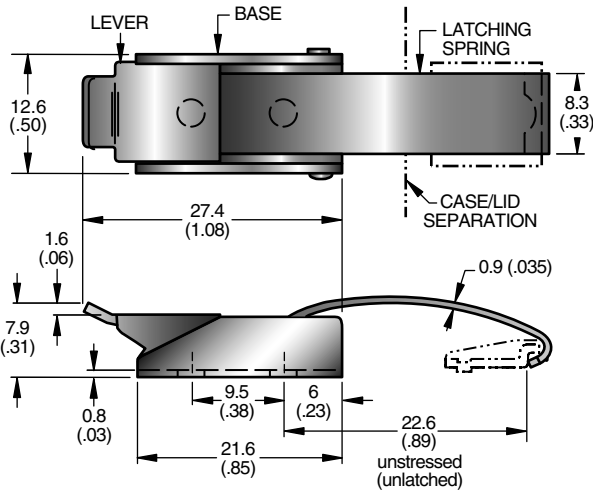


Southco® Draw Latches

Over-center Series, Small Size

- For applications where latch and keeper remain on the same plane
- Stainless Steel assemblies available
- Variety of keeper styles



LATCH PART NUMBER	
STEEL	STAINLESS STEEL
97-30-160-11 •	97-30-160-12 •

NOTE: Order latch and keeper separately.

KEEPER PART NUMBERS						
Material						
Steel	97-37-103-11 •	97-37-101-11 •	97-37-105-11 •	97-37-104-11 •	97-37-102-11 •	97-37-102-11 •
Stainless Steel	97-37-103-24 •	97-37-101-24 •	97-37-105-24 •	97-37-104-24 •	97-37-102-24 •	97-37-102-24 •
Dimension S	14.7 (.58)	14.7 (.58)	21.8 (.86)	33 (1.30)	27.4 (1.08)	27.4 (1.08)



Material and Finish

Steel assemblies

BUTTON KEEPER: Low carbon steel, case hardened.

OTHER KEEPERS, LEVER and BASE: 1010 Steel, case hardened.

SPRING: 1064 Steel.

Components listed above are zinc plated plus bright chromate dip.

PINS: 18-9LW Stainless steel, passivated.

Stainless steel assemblies

BUTTON KEEPER: 303 Stainless steel, passivated.

OTHER KEEPERS, LEVER and BASE: 302 Stainless steel, passivated.

PINS: 18-9LW Stainless steel, passivated.

SPRING: 17-7PH Stainless steel, passivated.

Product Strength Guidelines

(To assist in your product selection; samples are available for your evaluation.)

Steel - Clamping Force: 135 N (30 lbs.)

Stainless Steel - Clamping Force: 135 N (30 lbs.)

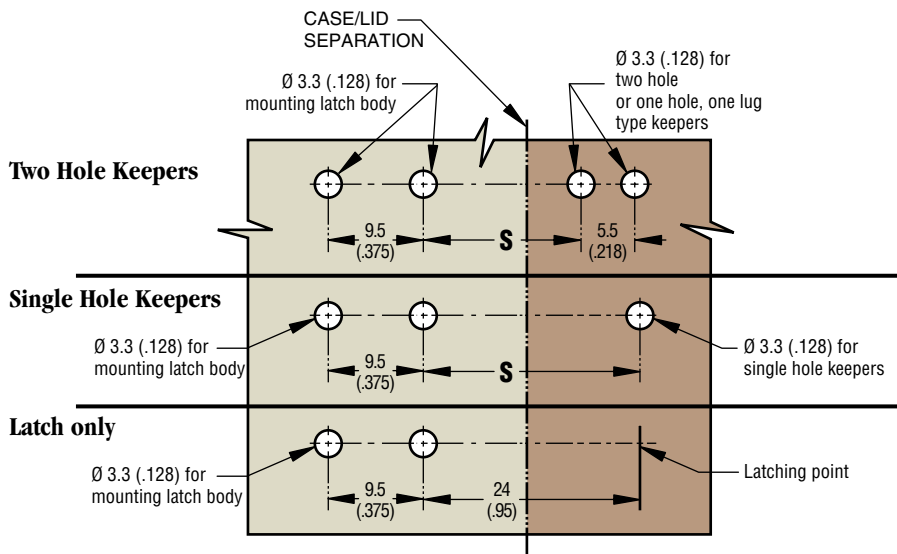
millimeter (inch)
millimeter
(inch)

Dimensions without tolerances are for reference only.

Panel Preparation

Mount latches and keepers with M3 (No. 4) screws.

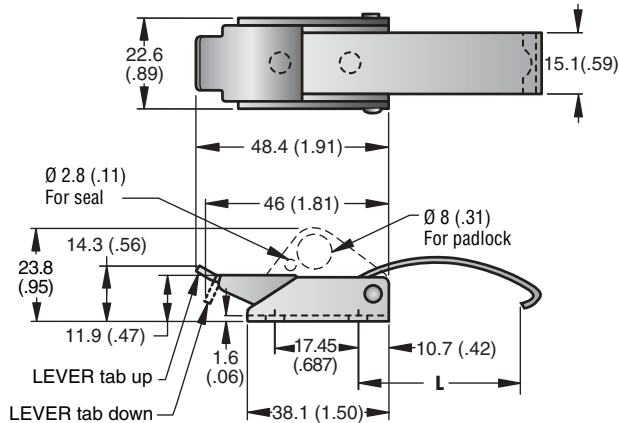
For button type keeper use a countersunk head screw.



Southco® Draw Latches

Over-center Series, Medium Size

- For applications where latch and keeper remain on the same plane
- Secondary catch option prevents accidental opening
- Padlock and security features available
- Stainless Steel assemblies
- Variety of latch and keeper styles



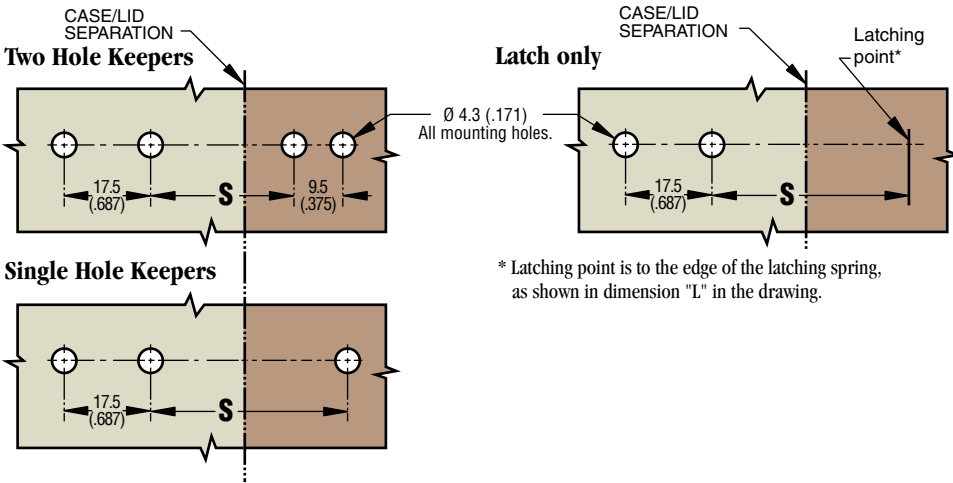
NOTE: Order latch and keeper separately.

LATCH BODY STYLE	LATCHING SPRING		LATCH PART NUMBERS
	LENGTH	L unstressed (unlatched)	
STEEL ASSEMBLIES, HEAVY DUTY			
	SHORT	29.4 (1.16)	97-50-150-11 •
	MEDIUM	42.1 (1.66)	97-50-160-11 •
	LONG	54.8 (2.16)	97-50-170-11 •
	SHORT	29.4 (1.16)	97-50-250-11 •
	MEDIUM	42.1 (1.66)	97-50-260-11 •
	LONG	54.8 (2.16)	97-50-270-11 •
	SHORT	29.4 (1.16)	97-50-350-11 •
	MEDIUM	42.1 (1.66)	97-50-360-11 •
	LONG	54.8 (2.16)	97-50-370-11 •
STEEL ASSEMBLIES, LIGHT DUTY			
	SHORT	29.4 (1.16)	97-50-110-11 •
	MEDIUM	42.1 (1.66)	97-50-120-11 •
	SHORT	29.4 (1.16)	97-50-210-11 •
	MEDIUM	42.1 (1.66)	97-50-220-11 •
	SHORT	29.4 (1.16)	97-50-310-11 •
	MEDIUM	42.1 (1.66)	97-50-320-11 •
STAINLESS STEEL ASSEMBLIES, LIGHT DUTY ONLY			
	SHORT	29.4 (1.16)	97-50-110-12 •
	MEDIUM	42.1 (1.66)	97-50-120-12 •
	LONG	54.8 (2.16)	97-50-130-12 •
	SHORT	29.4 (1.16)	97-50-210-12 •
	MEDIUM	42.1 (1.66)	97-50-220-12 •
	LONG	54.8 (2.16)	97-50-230-12 •
	SHORT	29.4 (1.16)	97-50-310-12 •
	MEDIUM	42.1 (1.66)	97-50-320-12 •
	LONG	54.8 (2.16)	97-50-330-12 •

KEEPER PART NUMBERS	
	STEEL 97-57-103-11 •
	STAINLESS STEEL 97-57-103-24
	STEEL 97-57-105-11 •
	STAINLESS STEEL 97-57-105-24
	STEEL 97-57-104-11 •
	STAINLESS STEEL 97-57-104-24
	STEEL 97-57-102-11 •
	STAINLESS STEEL 97-57-102-24

Panel Preparation

Mount latches and keepers with M4 or No. 8 screws or 5/32" rivets. For button type keepers use a countersunk head screw.



LATCHING SPRING LENGTH	DIMENSION S – according to keeper style				LATCH ONLY (NO KEEPER)
SHORT	15.9 (.63)	29.4 (1.16)	47.6 (1.88)	38.1 (1.50)	32.8 (1.25)
MEDIUM	28.6 (1.13)	42.1 (1.66)	60.3 (2.38)	50.8 (2.00)	44.4 (1.75)
LONG	41.3 (1.63)	54.8 (2.16)	73.0 (2.88)	63.5 (2.50)	57.1 (2.25)

Optional Features

1. Black Finish

To order black powder coat finish on steel parts, change the **last digit** of the part number as follows:

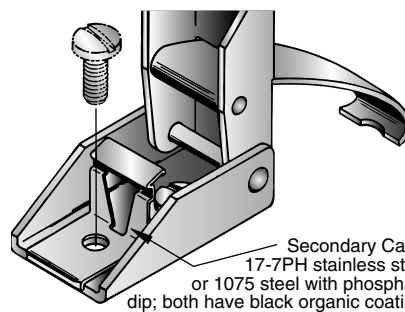
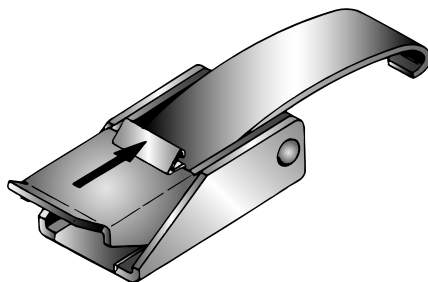
For black coat, change from 1 to 5. Example: 97-50-150-15.

2. Secondary Catch provides added resistance to:

- severe vibration
- accidental opening
- shock load

LATCH WITH SECONDARY CATCH

Add during installation



SECONDARY CATCH PART NUMBERS

Steel	97-58-101-11
Stainless Steel	97-58-101-25



Material and Finish

Steel assemblies

BUTTON KEEPER: Low carbon steel, case hardened .

OTHER KEEPERS, LEVER and BASE: 1010 Steel.

LATCHING SPRING: 1064 Steel.

Components listed above are zinc plated plus bright chromate dip.

PIN and RIVET: 302 Stainless steel, passivated.

Stainless steel assemblies

BUTTON KEEPER: 303 Stainless steel, passivated.

OTHER KEEPERS, LEVER and BASE: 304 Stainless steel, passivated.

PIN and RIVET: 302 Stainless steel, passivated.

LATCHING SPRING: 17-7PH Stainless steel, passivated.

Product Strength Guidelines

(To assist in your product selection; samples are available for your evaluation.)

Heavy Duty

Clamping Force: 670 N (150 lbs.)

Light Duty

Clamping Force: 310 N (70 lbs.)

millimeter (inch)
millimeter
(inch)

Dimensions without tolerances are for reference only.

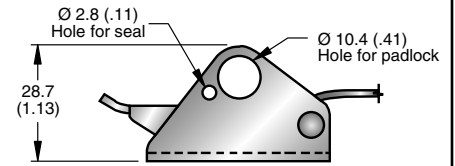
Southco® Draw Latches

Over-center Series, Large Size

- For applications where latch and keeper remain on the same plane
- Variety of latch and keeper styles
- Optional features for tamper resistance



Latch body with features for tamper resistance.



Material and Finish

BUTTON KEEPER: 12L14 steel, case hardened, zinc plate plus bright chromate or zinc alloy plate, black chromate plus sealer.
OTHER KEEPERS, LEVER and BASE: 1010 Steel, zinc plated plus bright chromate dip or black powder coat.

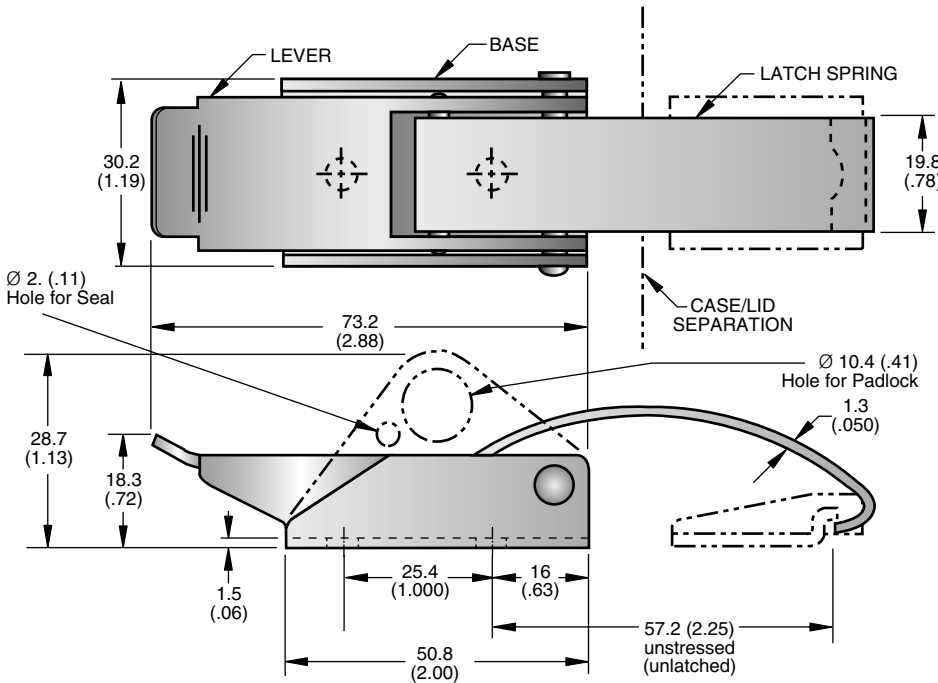
LATCHING SPRING: 1064 Steel, zinc plated plus bright chromate dip or black powder coat.

RIVETS: 430 Stainless steel, natural or with black powder coat.

Product Strength Guidelines

(To assist in your product selection; samples are available for your evaluation.)

Clamping Force: 290 N (65 lbs.)



All mounting holes in fastener are $\varnothing 5.2 (.203)$. Mount latches and keepers with M5 screws, No. 10 screws or 3/16" rivets.

For button type keeper use a countersunk head screw.

NOTE: Order latch and keeper separately.

LATCH PART NUMBERS		
LATCH BODY STYLE	FINISH (Lever, Base, and Latching spring)	
	bright	97-60-120-11 •
	black	97-60-120-15 •
	bright	97-60-320-11 •
	black	97-60-320-15 •

KEEPER PART NUMBERS			
Finish			
bright	97-67-103-11 •	97-67-105-11 •	97-67-104-11 •
black	97-67-103-15 •	97-67-105-15 •	97-67-104-15 •

millimeter (inch)
 millimeter
 (inch)

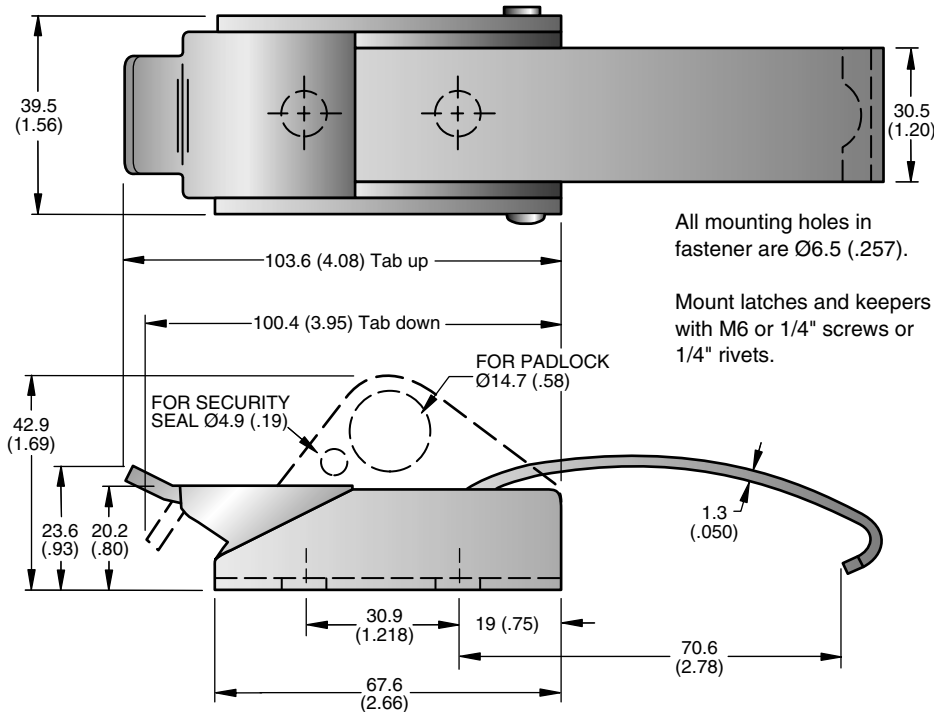
Dimensions without tolerances are for reference only.

Draw Latches
Steel/Stainless Steel

Southco® Draw Latches

Over-center Series, Extra-large Size

- For applications where latch and keeper remain on the same plane
- Reduce vibration
- Variety of latch and keeper styles
- Optional features for tamper resistance



All mounting holes in fastener are $\text{Ø}6.5$ (.257).

Mount latches and keepers with M6 or 1/4" screws or 1/4" rivets.

Material and Finish

BUTTON KEEPER: Low carbon steel,
OTHER KEEPERS: 1008 or 1010 Steel, case hardened.

LEVER and BASE: 1010 Steel.

RIVET: steel

LATCHING SPRING: 1064 Steel. The components listed above are zinc plated plus bright chromate dip.

Pin: 303 stainless steel, passivated,

NOTE: Order latch and keeper separately.

LATCH PART NUMBERS	
TAB POSITION ON LEVER	
Latch	
	97-70-120-11 •
	97-70-220-11 •
Latch with tamper-resistant option	
	97-70-320-11 •

KEEPER PART NUMBERS	
97-77-103-11 •	97-77-104-11 •

Product Strength Guidelines

(To assist in your product selection; samples are available for your evaluation.)

Clamping Force: 645 N (145 lbs.)

millimeter (inch)
millimeter
(inch)

Dimensions without tolerances are for reference only.