

Geared potentiometer GP03/1

Compact rotary encoder for absolute position



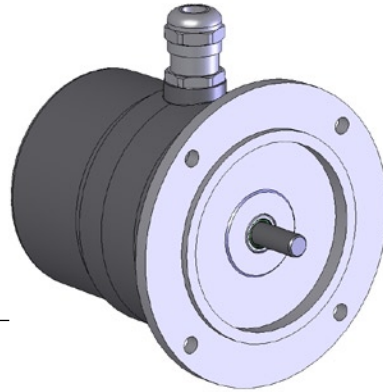
SIKO GmbH

Address
Weihermattenweg 2
79256 Buchenbach

Telephone
+49 7661 394-0

Fax
+49 7661 394-388

eMail
info@siko.de
Internet
www.siko.de



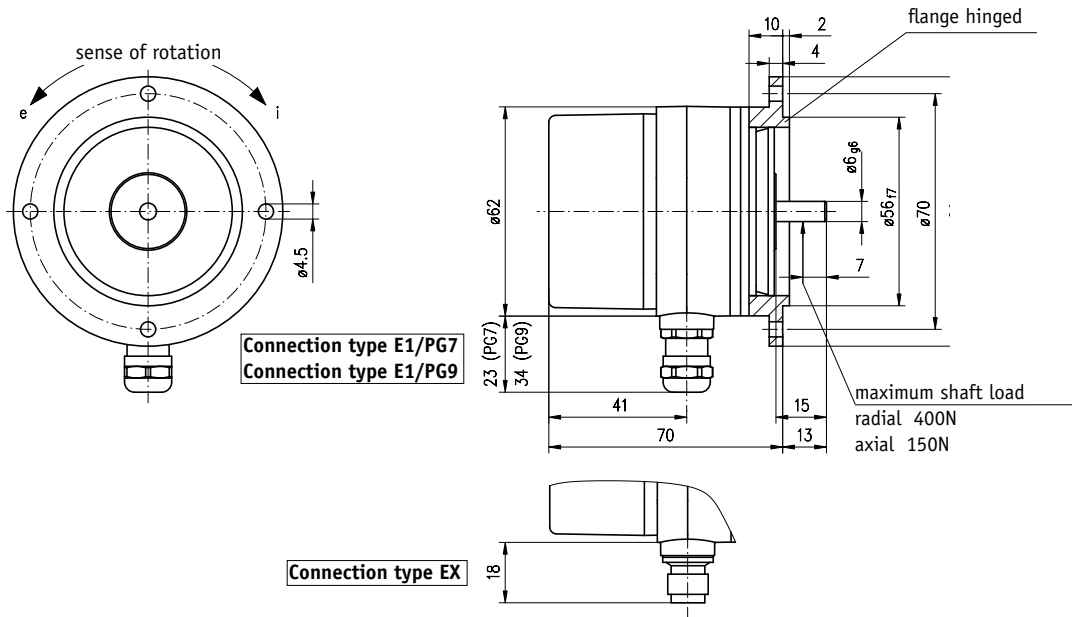
Features:

- solid shaft 6mm
- adaptation to various measurement distances thanks to the broad range of available gear ratios
- compact design
- integrated slip clutch for potentiometer protection
- high protectiontype

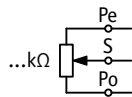
Feature	Order Text	Additional information
Gear ratio	0.2 ... 256 A	
Drive shaft	V/6 B Solid shaft \varnothing	
Type of connection	E1/PG7 C Cable gland PG7 E1/PG9 Cable gland PG9 EX for connector M12	
Potentiometer type	01 D 1 filament 02 10 filament/wire 03 10 filament	(P01) (P01, P05, P10) (P01, P05, P10)
Analog output	MWI E Measurement transducer 4 ... 20mA MWU Measurement transducer 0 ... 10V P01 Potentiometer 1kOhm P05 Potentiometer 5kOhm P10 Potentiometer 10kOhm	
Counting direction	i F right rising e left rising	(only with MWI or MWU) (only with MWI or MWU)

Your ordering: GP03/1 - A - B - C - D - E - F

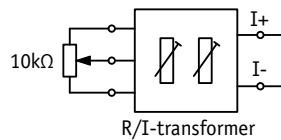
Geared Potentiometer GP03/1



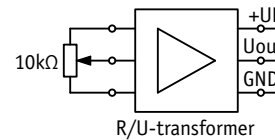
without Measurement transducer



Measurement transducer MWI



Measurement transducer MWU



without Measurement transducer

signal	Po	Pe	S	N.C.
E1 (Terminal)	3	1	2	
EX (Connector pin)	1	2	3	4

Measurement transducer MWI

signal	I+	I-	N.C.	N.C.
E1 (Terminal)	1	2	3	
EX (Connector pin)	1	2	3	4

Measurement transducer MWU

signal	+24VDC	GND	Uout	N.C.
E1 (Terminal)	1	2	3	
EX (Connector pin)	1	2	3	4

Technical data

Gear ratio	0.2 ... 256
Speed	max.500 min ⁻¹
Power supply	24 VDC ±20%
Working temperature	-20°C ... +80°C
Condensation	not permitted
Service life-operations	1 × 10 ⁶ (2 × 10 ⁶)
Certification/rotection class	CE
Protection	IP65
Housing	reinforced plastic / aluminium
Shaft	special steel

Additional information

depending on gear ratio
3 corresponding to IEC 801
according to DIN VDE 0470

Electrical data Potentiometer:

Resistance tolerance	±5%
Linearity tolerance	±0.25% (Potentiometer Type 01, 02, 03)
Load capacity	1W at 70°C (Potentiometer Type 01) 2W at 70°C (Potentiometer Type 02, 03)
Range of rotation	340° ±5° 3600° +10°
Standard residual end pont resistance	0.5% or 1 Ohm

Potentiometer Type 01 (mechanically ricing)
Potentiometer Type 02, 03
(whichever value is higher)

Accessory

83419

Mating connector

4 pins; circular cableconnector; M12

Getriebepotentiometer GP03/1

Kompakter Drehgeber zur absoluten Positionserfassung



SIKO GmbH

Anschrift

Weiherrmattenweg 2
79256 Buchenbach

Telefon

+49 7661 394-0

Telefax

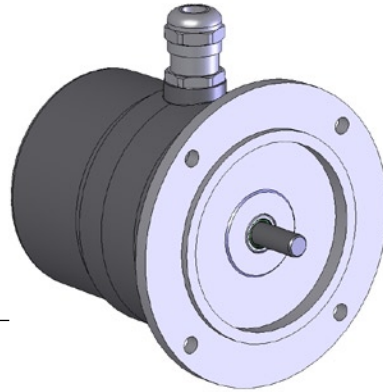
+49 7661 394-388

E-Mail

info@siko.de

Internet

www.siko.de



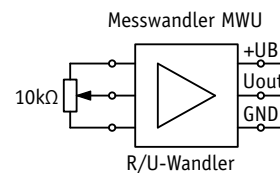
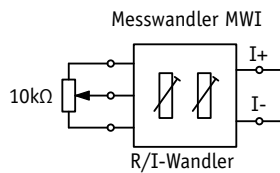
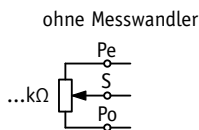
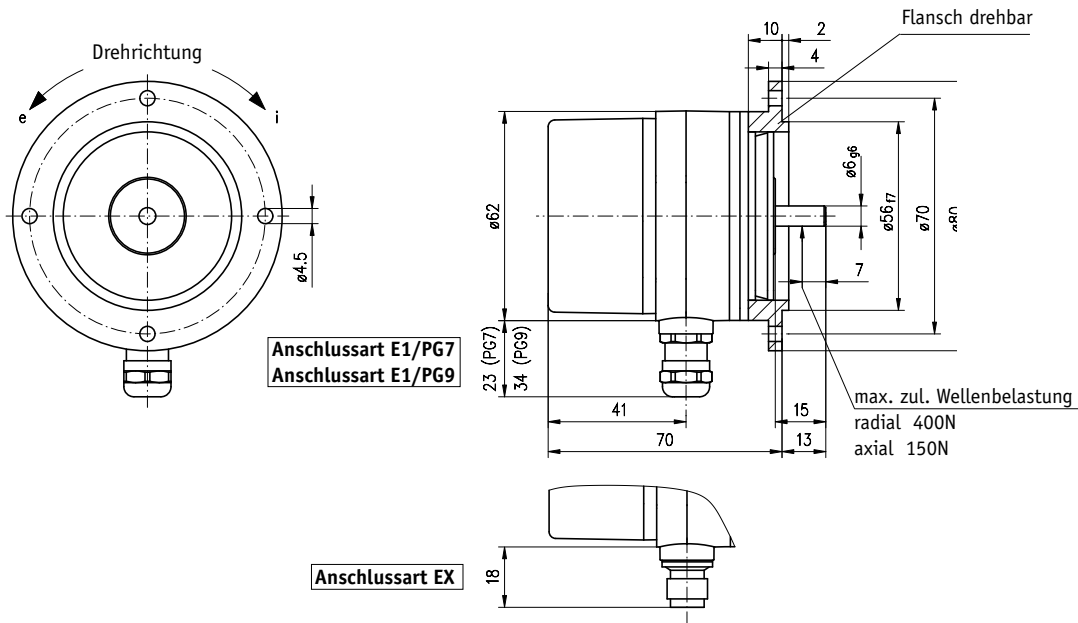
Merkmale:

- Vollwelle 6mm
- Anpassung an unterschiedlichste Messwege durch breites Spektrum an verfügbaren Getriebeübersetzungen
- kompakte Bauform
- eingebaute Rutschkupplung zum Schutz des Potentiometers
- hohe Schutzart

Merkmale	Bestelltext	Ergänzung
Übersetzung	0.2 ... 256 A	
Antriebswelle	V/6 B	Vollwelle / Durchmesser
Anschlussart	E1/PG7 E1/PG9 EX C	Kabelverschraubung PG7 Kabelverschraubung PG9 für Stecker M12
Potentiometer Typ	01 02 03 D	1 Wendel (P10) 10 Wendel/Draht (P01, P05, P10) 10 Wendel (P01, P05, P10)
Analogausgang	MWI MWU P01 P05 P10 E	Messwandler 4 ... 20mA Messwandler 0 ... 10V Poti 1k0hm Poti 5k0hm Poti 10k0hm
Drehrichtung	i e F	rechts steigend (nur bei MWI oder MWU) links steigend (nur bei MWI oder MWU)

Ihre Bestellung: - - - - - -

Getriebepotentiometer GP03/1



ohne Messwandler

Signal	Po	Pe	S	N.C.
E1 (Klemme)	3	1	2	
EX (Steckerpin)	1	2	3	4

Messwandler MWI

Signal	I+	I-	N.C.	N.C.
E1 (Klemme)	1	2	3	
EX (Steckerpin)	1	2	3	4

Messwandler MWU

Signal	+24VDC	GND	Uout	N.C.
E1 (Klemme)	1	2	3	
EX (Steckerpin)	1	2	3	4

Technische Daten

Übersetzung	0.2 ... 256
Drehzahl	max.500 min ⁻¹
Spannungsversorgung	24 VDC ±20%
Arbeitstemperatur	-20°C ... +80°C
Betauung	nicht zulässig
Lebensdauer - Achsbewegung	1 x 10 ⁶ (2 x 10 ⁶)
Prüfzeichen / Störschutzklasse	CE
Schutzart	IP65
Gehäuse	Kunststoff verstärkt / Aluminium
Welle	Edelstahl

Ergänzung

je nach Übersetzung

3 nach IEC 801

nach DIN VDE 0470

Elektrische Werte Potentiometer:

Widerstandstoleranz	±5%	
Linearitätstoleranz	±0.25% (Poti Typ 01, 02, 03)	
Belastbarkeit	1W bei 70°C (Poti Typ 01) 2W bei 70°C (Poti Typ 02, 03)	
Drehbereich	340° ±5° 3600° +10°	Poti Typ 01 (mechanisch durchgehend) Poti Typ 02, 03
Standard Endwiderstand	0.5% oder 1 Ohm	(es gilt jeweils der größere Wert)

Zubehör	83419	Gegenstecker	4-polig; Kupplungsdose gerade; M12
----------------	-------	--------------	------------------------------------