

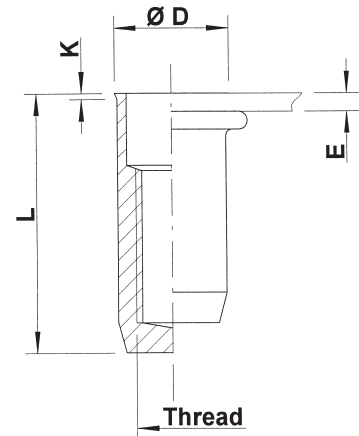
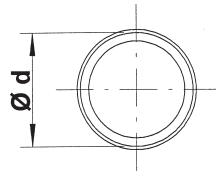
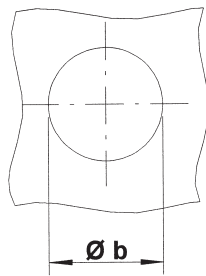
Stainless Steel 316
(contains Molybden)

Low profile head
Round shank
Closed

extra high
corrosion resistance



UKX



Stainless steel

THREAD	TYPE	E = grip	L	b ^{+0,1} = drill dia	d = shank dia	D	K	kg/1000	ORDER CODE
M4	UKX20	0,5-2,0	15,5	6,0	6,0	6,5	0,5	1,9	554 250
M5	UKX30	0,5-3,0	18,0	7,0	7,0	7,5	0,5	2,7	555 450
M6	UKX30	0,5-3,0	21,5	9,0	9,0	9,5	0,5	5,8	556 450
M8	UKX30	0,5-3,0	24,0	11,0	11,0	11,5	0,5	8,8	558 190

Availability: please contact our Sales Department

All dimensions in mm
Technical data subject to modification

