

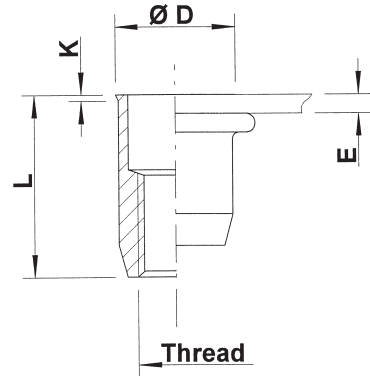
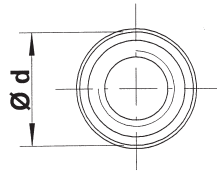
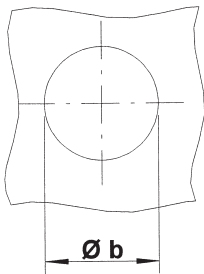
Stainless Steel 316
(contains Molybden)

Low profile head
Round shank
Open

extra high
corrosion resistance



UKO



THREAD	TYPE	E = grip	L	b ^{+0,1} = drill dia	d = shank dia	D	K	kg/1000	ORDER CODE
M4	UKO20	0,5-2,0	11,0	6,0	6,0	6,5	0,5	1,2	554 220
M5	UKO30	0,5-3,0	12,0	7,0	7,0	7,5	0,5	1,5	555 400
M6	UKO30	0,5-3,0	14,5	9,0	9,0	9,5	0,5	3,4	556 400
M8	UKO30	0,5-3,0	16,0	11,0	11,0	11,5	0,5	5,0	558 160

Availability: please contact our Sales Department

All dimensions in mm
Technical data subject to modification

