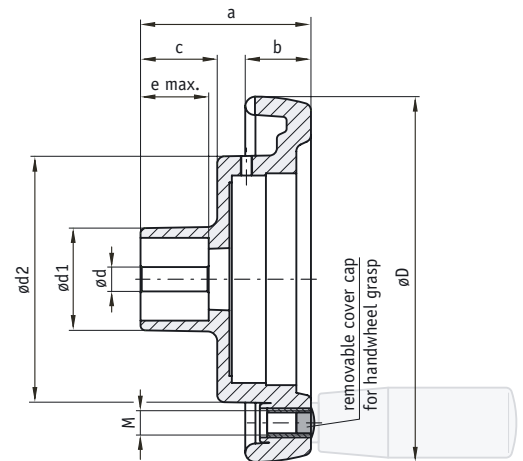


Handwheel KHB...

This favourably priced plastic handwheel with robust aluminium hub is available in various sizes.



Features:

- various sizes
- aluminium hub for high stability and easy shaft mounting

| Type | øD | ødv | ødx | ødn | ød1 | ød2 | a | b | c | e | GfG | Suitable for | Weight |
|--------|-----|-----|-----|-----|-----|------|----|----|------|----|-----|---------------|---------|
| KHB 9 | 87 | 5.8 | 16 | 12 | 32 | 63 | 54 | 17 | 21 | 20 | M6 | S50/1 | 0.16 kg |
| KHB 13 | 130 | 6.8 | 26 | 20 | 42 | 98.2 | 66 | 24 | 28.5 | 24 | M8 | S80/1; SZ80/1 | 0.35 kg |
| KHB 15 | 150 | 6.8 | 26 | 20 | 42 | 101 | 70 | 27 | 31.5 | 28 | M10 | S80/1; SZ80/1 | 0.43 kg |
| KHB 20 | 200 | 6.8 | 30 | 25 | 46 | 136 | 72 | 32 | 25 | 23 | M10 | S120/1 | 0.81 kg |

dv = d pre-drilled; dx = d max.; dn = d max. with key groove; GfG = thread for handle

11

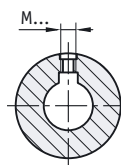
| Feature | Ordering data | Technical data | Additional information |
|------------------------------------|-------------------------------------|---|--|
| Handwheel | KHB... A | see table above | |
| Bore ød | d pre-dr. ... B | pre-drilled, see table above, value ødv d max. in mm steps (H7) | standard see table above (smallest bore corresponding to d pre-dr.) |
| Key groove | OP JS9 C | without key groove transition fit | standard acc. to DIN 6885 T1 |
| Pin hole (only without key groove) | OS No. x ø/f D | without pin hole see fold-out page | standard no. of pinholes x diameter / dimension f e.g. 2x3.8/12 |
| Hub thread | ONG No. x ø/f E | without hub thread see fold-out page | standard no. of hub threads x diameter / dimension f e.g. 2xM4/12 |
| Turned-down hub | OAN 20x15 F | without turned-down hub see fold-out page | Standard nur KHB9 |
| Position indicator mounted (*) | PM PS G | position indicator mounted position indicator separate | standard |
| Material | | handwheel: plastic, black | hub: aluminium |

* separate ordering of a position indicator necessary! (> see pages 9/10)

Your ordering data: - - - - - - -

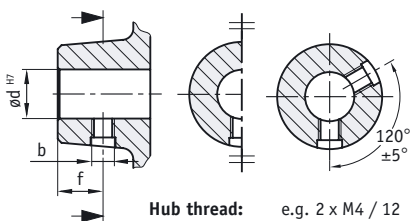
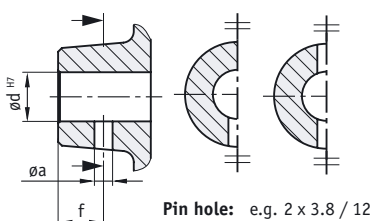
■ Hub thread with key groove present

| Feature | Ordering date | Designation | | |
|------------------------|---------------|-------------|--------|-------|
| | | groove mm | thread | ød |
| Hub thread | | | | |
| all hand wheels except | M3/12 | 4 | M3 | 12 |
| KHB9 and KHB20 | M4/12 | 5 | M4 | 14-16 |
| | M5/12 | 6 | M5 | 18-22 |
| | M6/12 | 8 | M6 | 24-30 |
| | M8/12 | 10 | M8 | 32-35 |
| KHB9 | M3/8 | 4 | M3 | 12 |
| KHB20 | M3/10 | 4 | M3 | 12 |
| KHB20 | M4/10 | 5 | M4 | 14-16 |
| KHB20 | M5/10 | 6 | M5 | 18-24 |



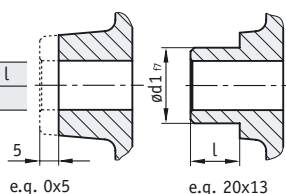
■ Hub thread or pin hole without key groove

| Feature | Ordering date | Designation | | | | |
|------------------------|---------------|-------------|----------|----|-----|----|
| | | ød > | up to ød | f | øa | b |
| Pin hole | | | | | | |
| all hand wheels except | 3.8/12 | 6 | 12 | 12 | 3.8 | - |
| KHB9 and KHB20 | 4.8/12 | 12 | 25 | 12 | 4.8 | - |
| | 5.8/12 | 25 | 35 | 12 | 5.8 | - |
| KHB9 | 3.8/8 | 6 | 12 | 8 | 3.8 | - |
| KHB9 | 4.8/8 | 12 | 25 | 8 | 4.8 | - |
| KHB20 | 3.8/10 | 6 | 12 | 10 | 3.8 | - |
| KHB20 | 4.8/10 | 12 | 25 | 10 | 4.8 | - |
| Hub thread | | | | | | |
| all hand wheels except | M4/12 | 6 | 12 | 12 | - | M4 |
| KHB9 and KHB20 | M6/12 | 12 | 25 | 12 | - | M6 |
| | M8/12 | 25 | 35 | 12 | - | M8 |
| KHB9 | M4/8 | 6 | 12 | 8 | - | M4 |
| KHB9 | M6/8 | 12 | 25 | 8 | - | M6 |
| KHB20 | M4/10 | 6 | 12 | 10 | - | M4 |
| KHB20 | M6/10 | 12 | 25 | 10 | - | M6 |



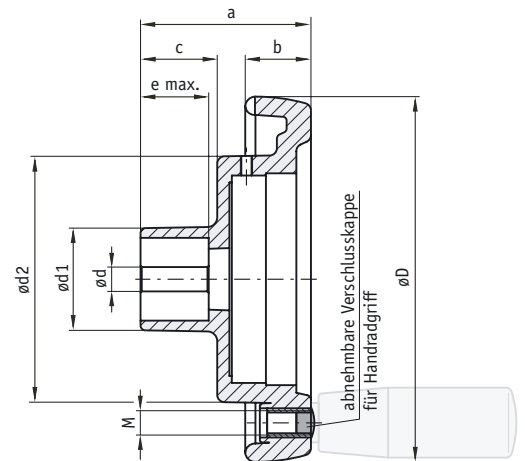
■ Hub turned down to length and circumference

| Feature | Ordering date | Designation |
|-----------------|---------------|---------------------|
| Hub turned down | d1 (f7)xl | ød1 (f7) x length l |
| Example: | 20x13 | ø20 f7 x 13 mm |



Handrad KHB...

Das preisgünstige Kunststoffhandrad mit robuster Aluminiumnabe ist in verschiedenen Größen verfügbar.



Merkmale:

- verschiedene Baugrößen
- Aluminiumnabe für hohe Stabilität und einfache Wellenmontage

| Typ | øD | ødv | ødx | ødn | ød1 | ød2 | a | b | c | e | GfG | passend für | Gewicht |
|--------|-----|-----|-----|-----|-----|------|----|----|------|----|-----|---------------|---------|
| KHB 9 | 87 | 5.8 | 16 | 12 | 32 | 63 | 54 | 17 | 21 | 20 | M6 | S50/1 | 0.16 kg |
| KHB 13 | 130 | 6.8 | 26 | 20 | 42 | 98.2 | 66 | 24 | 28.5 | 24 | M8 | S80/1; SZ80/1 | 0.35 kg |
| KHB 15 | 150 | 6.8 | 26 | 20 | 42 | 101 | 70 | 27 | 31.5 | 28 | M10 | S80/1; SZ80/1 | 0.43 kg |
| KHB 20 | 200 | 6.8 | 30 | 25 | 46 | 136 | 72 | 32 | 25 | 23 | M10 | S120/1 | 0.81 kg |

dv = d vorgebohrt; dx = d max.; dn = d max. mit Passfedernut, GfG = Gewinde für Griff

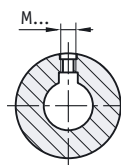
| Merkmale | Bestelldaten | Technische Daten | Ergänzung |
|--|--------------------------------------|--|---|
| Handrad | KHB... A | siehe Tabelle oben | |
| Bohrung ød | d vorg. ... B | vorgebohrt, siehe Tabelle oben, Wert ødv d max. in mm Schritten (H7) | Standard siehe Tabelle oben (kleinste Bohrung entspricht d vorg.) |
| Passfedernut | OP JS9 C | ohne Passfedernut leichter Sitz | Standard nach DIN 6885 T1 |
| Stiftloch (nur ohne Passfedernut) oder | OS Anz. x ø/f D | ohne Stiftloch siehe Ausklappseite | Standard Stiftlochanzahl x Durchmesser / Maß f z.B. 2x3.8/12 |
| Nabengewinde | ONG Anz. x ø/f E | ohne Nabengewinde siehe Ausklappseite | Standard Gewindeanzahl x Durchmesser / Maß f z.B. 2xM4/12 |
| Nabe abgedreht | OAN 20x15 F | ohne abgedrehte Nabe siehe Ausklappseite | Standard nur KHB9 |
| Positionsanzeige montiert (*) | PM PS G | Positionsanzeige montiert Positionsanzeige separat | Standard |
| Werkstoff | | Handrad: Kunststoff schwarz | Nabe: Aluminium |

* separate Bestellung einer Positionsanzeige notwendig! (> siehe Seite 9/10)

Ihre Bestellung: - - - - - - -

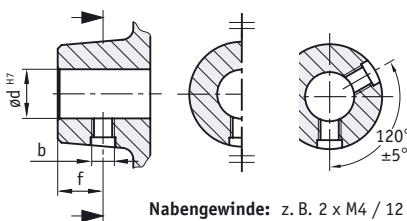
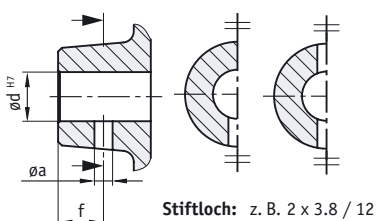
Nabengewinde bei vorhandener Passfedernut

| Merkmal | Bestelldaten | Bezeichnung | | |
|----------------------|--------------|-------------|---------|-----------------|
| Nabengewinde | | Nut in mm | Gewinde | $\varnothing d$ |
| alle Handräder außer | M3/12 | 4 | M3 | 12 |
| KHB9 und KHB20 | M4/12 | 5 | M4 | 14-16 |
| | M5/12 | 6 | M5 | 18-22 |
| | M6/12 | 8 | M6 | 24-30 |
| | M8/12 | 10 | M8 | 32-35 |
| KHB9 | M3/8 | 4 | M3 | 12 |
| KHB20 | M3/10 | 4 | M3 | 12 |
| KHB20 | M4/10 | 5 | M4 | 14-16 |
| KHB20 | M5/10 | 6 | M5 | 18-24 |



Nabengewinde oder Stiftloch ohne Passfedernut

| Merkmal | Bestelldaten | Bezeichnung | | | | |
|----------------------|---------------|-------------------|---------------------|----|-----------------|----|
| Stiftloch | | $\varnothing d >$ | bis $\varnothing d$ | f | $\varnothing a$ | b |
| alle Handräder außer | 3.8/12 | 6 | 12 | 12 | 3.8 | - |
| KHB9 und KHB20 | 4.8/12 | 12 | 25 | 12 | 4.8 | - |
| | 5.8/12 | 25 | 35 | 12 | 5.8 | - |
| KHB9 | 3.8/8 | 6 | 12 | 8 | 3.8 | - |
| KHB9 | 4.8/8 | 12 | 25 | 8 | 4.8 | - |
| KHB20 | 3.8/10 | 6 | 12 | 10 | 3.8 | - |
| KHB20 | 4.8/10 | 12 | 25 | 10 | 4.8 | - |
| Nabengewinde | | | | | | |
| alle Handräder außer | M4/12 | 6 | 12 | 12 | - | M4 |
| KHB9 und KHB20 | M6/12 | 12 | 25 | 12 | - | M6 |
| | M8/12 | 25 | 35 | 12 | - | M8 |
| KHB9 | M4/8 | 6 | 12 | 8 | - | M4 |
| KHB9 | M6/8 | 12 | 25 | 8 | - | M6 |
| KHB20 | M4/10 | 6 | 12 | 10 | - | M4 |
| KHB20 | M6/10 | 12 | 25 | 10 | - | M6 |



Nabe abgedreht auf Länge und Umfang

| Merkmal | Bestelldaten | Bezeichnung |
|----------------|--------------------|--|
| Nabe abgedreht | $d1 (f7) \times l$ | $\varnothing d1 (f7) \times \text{Länge } l$ |
| Beispiel | 20x13 | $\varnothing 20 f7 \times 13 \text{ mm}$ |

