



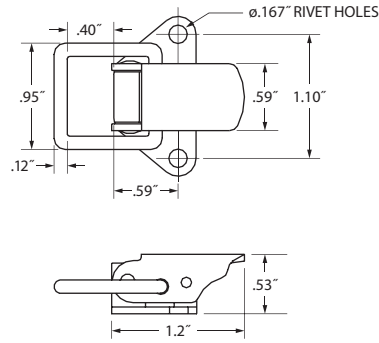
This Draw Latch is based on our very popular TL-20 series and features a thick flat link for higher working strength. Latches and keepers are ordered separately.

Material & Finish

Material: Cold rolled steel
Finish: Zinc plate with chromate
Option: Stainless steel

Mechanical

Ultimate Strength Steel: 380 lbs.
Ultimate Strength Stainless Steel: 270 lbs.
Working Strength Steel: 290 lbs.
Working Strength Stainless Steel: 180 lbs.
Pull-up Ability: 0.2"

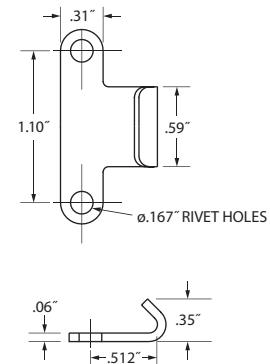


Note: Draw Latch and Keeper ordered separately.

Part Numbers

Steel, Zinc plate	TL-20-106-07
Stainless Steel, Bright	TL-20-106-52

Keeper



Material	Keeper Part Number
Cold Rolled Steel	TL-17-209-07
Stainless Steel	TL-17-209-52

All dimensions on this page are in inches.



The TL-20 series is like the TL-40 series but with shorter latches. The TL-20 Series has several links to choose from and is available with exposed or concealed installation styles.

Material & Finish

- Material:** Cold rolled steel
- Finish:** Zinc plate with chromate
- Option:** 300 stainless steel or equivalent

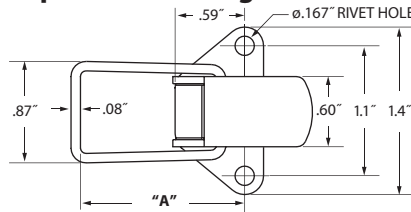
Mechanical

- Ultimate Strength:** 220 lbs.
- Working Strength:** 45 lbs.
- Pull-up Ability:** 0.2"
- Installation:** Mounting holes will accept .156" diameter rivets or #6 round head screws.

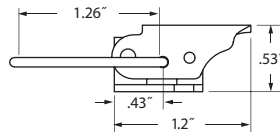
Keeper

The TL Series offers a variety of keeper options. Please see the TL Draw Latch Keeper page for models and specifications.

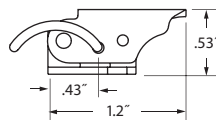
Exposed Mounting Holes



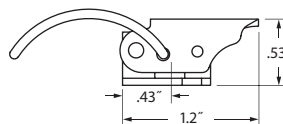
Flat Wire Link



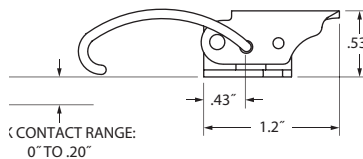
Short Curved Wire Link



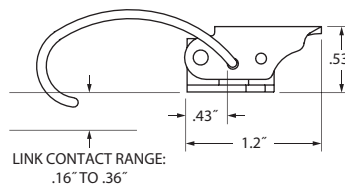
Long Curved Wire Link



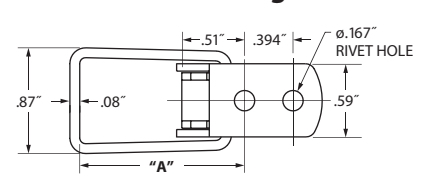
Shallow Hook Link



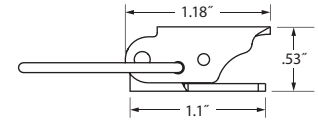
Deep Hook Link



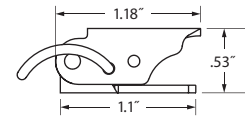
Concealed Mounting Holes



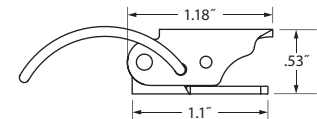
Flat Wire Link



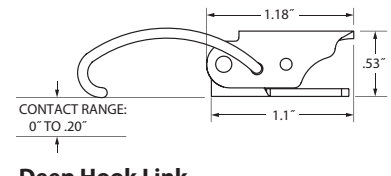
Short Curved Wire Link



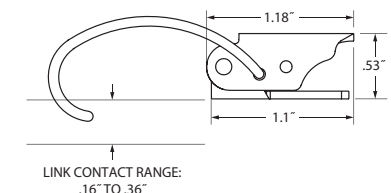
Long Curved Wire Link



Shallow Hook Link



Deep Hook Link



TL-20 Part Numbers

Note: Draw Latch and keeper ordered separately.

Link	Exposed Mounting Holes		Concealed Mounting Holes	
	"A"	Standard Latch	"A"	Standard Latch
Flat Wire	1.42	TL- 20-101-07	1.34	TL- 20-201-07
Short Curved Wire	0.85	TL-20-102-07	0.77	TL-20-202-07
Long Curved Wire	1.42	TL-20-103-07	1.34	TL-20-203-07
Shallow Hook	1.44	TL-20-104-07	1.36	TL-20-204-07
Deep Hook	1.57	TL-20-105-07	1.49	TL-20-205-07

Note: For stainless steel parts change -07 to -52

All dimensions on this page are in inches.



Secondary Catch



The TL-40 series offers a versatile range of medium size Draw Latches built for rough use. The TL-40 Series offers both exposed and concealed installation options and a wide selection of links. A secondary lock is available to help prevent accidental opening of the latch.

Material & Finish

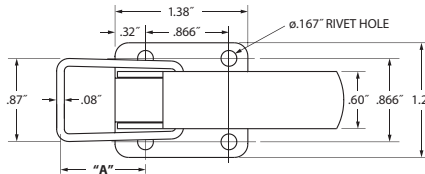
Material: Cold rolled steel
Finish: Zinc plate with chromate
Option: 300 stainless steel or equivalent

Mechanical

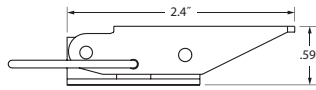
Ultimate Strength: 700 lbs.
Working Strength: 100 to 300 lbs.
Pull-up Ability: 0.6"
Installation: Mounting holes will accept .156" diameter rivets or #6 round head screws.

All dimensions on this page are in inches.

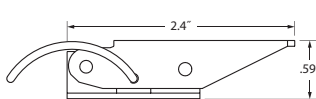
Exposed Mounting Holes



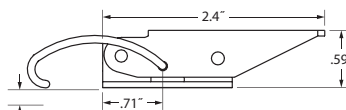
Flat Wire Link



Curved Wire Link

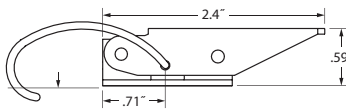


Shallow Hook Link



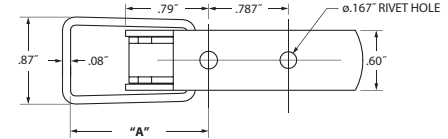
LINK CONTACT RANGE:
0" TO .20"

Deep Hook Link

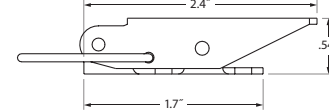


LINK CONTACT RANGE:
.16" TO .36"

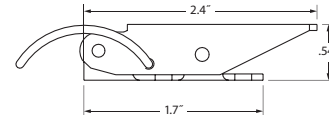
Concealed Mounting Holes



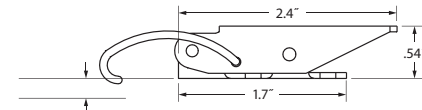
Flat Wire Link



Curved Wire Link

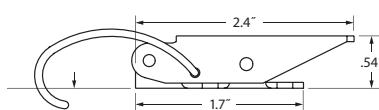


Shallow Hook Link



LINK CONTACT RANGE:
0" TO .20"

Deep Hook Link



LINK CONTACT RANGE:
.16" TO .36"

Note: Draw Latch and keeper ordered separately.

TL-40 Series Part Numbers

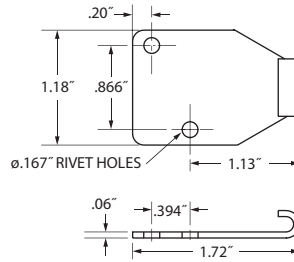
Link	Exposed Mounting Holes		
	"A"	Standard Latch	Secondary Catch Latch
Flat Wire	0.87	TL-40-101-07	TL-40-111-07
Curved Wire	0.87	TL-40-103-07	TL-40-113-07
Shallow Hook	0.89	TL-40-104-07	TL-40-114-07
Deep Hook	1.03	TL-40-105-07	TL-40-115-07

Link	Concealed Mounting Holes	
	"A"	Standard Latch
Flat Wire	1.38	TL-40-201-07
Curved Wire	1.38	TL-40-203-07
Shallow Hook	1.40	TL-40-204-07
Deep Hook	1.54	TL-40-205-07

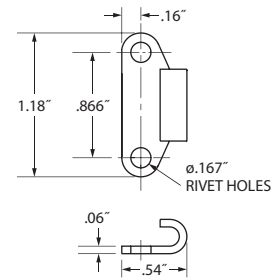
Note: For stainless steel parts change part number suffix from -07 to -52.

Keeper

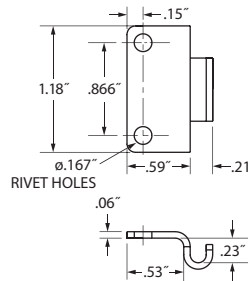
The TL Series offers a variety of keeper options. Please see the TL Draw Latch Keeper page for models and specifications. No keeper is required for the Hook link versions, but any TL Keeper may be used.



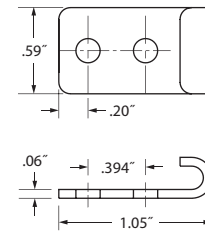
Material	Part Number
Cold Rolled Steel	TL-17-205-07
Stainless Steel	TL-17-205-52



Material	Part Number
Cold Rolled Steel	TL-17-201-07
Stainless Steel	TL-17-201-52



Material	Part Number
Cold Rolled Steel	TL-17-203-07
Stainless Steel	TL-17-203-52

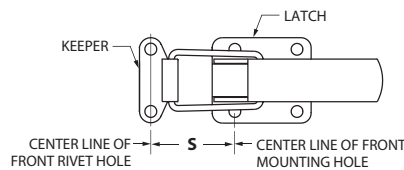


Material	Part Number
Cold Rolled Steel	TL-17-202-07
Stainless Steel	TL-17-202-52

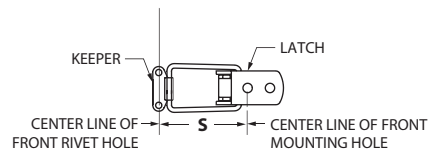


Closed Latch Linking Dimensions

Exposed



Concealed



These Keepers can be paired with any of the TL-20 or TL-40 Series Draw Latches. Details and specifications of latches are covered on the preceding pages.

Material & Finish

Material: Cold rolled steel

Finish: Zinc plate with chromate

Option: 300 stainless steel or equivalent

Mechanical

Installation: Mounting holes will accept .156" diameter rivets or #6 round head screws.

Draw Latch	Keeper Dimension S			
	TL-17-202-XX	TL-17-205-XX	TL-17-201-XX	TL-17-203-XX
TL-40-101	1.24"	1.91"	1.16"	1.07"
TL-40-103	1.30"	1.97"	1.22"	1.14"
TL-40-201	1.75"	2.42"	1.67"	1.58"
TL-40-203	1.81"	2.47"	1.73"	1.64"
TL-20-101	1.79"	2.46"	1.71"	1.63"
TL-20-102	1.26"	1.93"	1.18"	1.10"
TL-20-103	1.85"	2.52"	1.77"	1.69"
TL-20-201	1.71"	2.38"	1.63"	1.55"
TL-20-202	1.18"	1.85"	1.10"	1.02"
TL-20-203	1.77"	2.44"	1.69"	1.61"

All dimensions on this page are in inches.



Draw Latches

The TL-50 is a low profile latch that features a link with a flat wire to accommodate higher loads. The latch includes matching holes on the lever and base that enable the latch to be secured with a padlock.

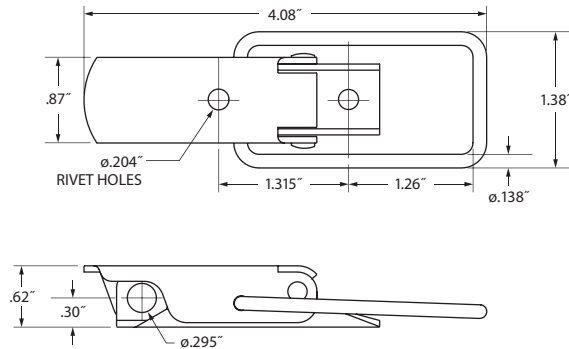
Material & Finish

Material: Cold rolled steel
Finish: Zinc plate with chromate
Option: Stainless steel

Mechanical

Ultimate Strength: 740 lbs.
Working Strength: 560 lbs.
Pull-up Ability: 0.59"

Flat Wire Link

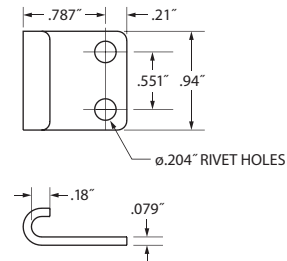


Note: Draw Latch and keeper ordered separately.

Tension Latch Part Numbers

Steel, Zinc plate	TL-50-201-07
Stainless Steel, Bright	TL-50-201-52

Keeper



Material	Part Number
Cold Rolled Steel	TL-17-501-07
Stainless Steel	TL-17-501-52

All dimensions on this page are in inches.

Southco® TL Draw Latch Over-Center, Large, Heavy Duty

southco®



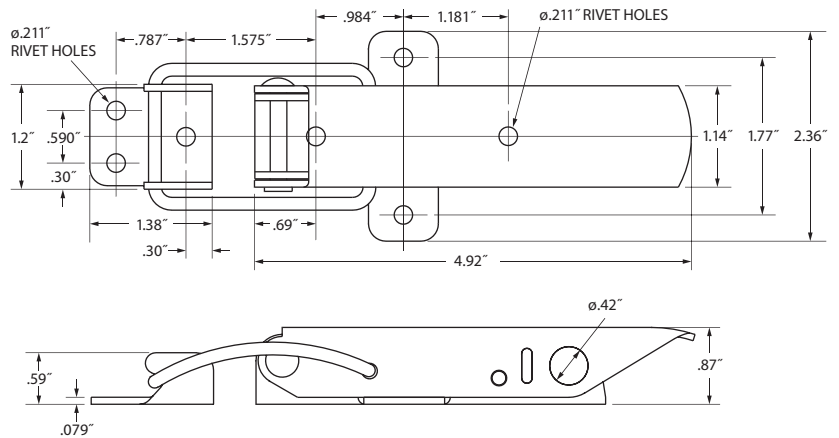
The TL-60 Series is a large, heavy-duty Draw Latch with a curved link for resilience under shock loads. The latch is ideal for use on shipping containers, construction equipment, and other demanding applications.

Material & Finish

Material: Cold rolled steel
Finish: Zinc plate with chromate

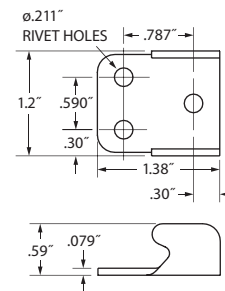
Mechanical

Ultimate Strength: 1500 lbs.
Working Strength: 600 lbs.
Pull-up Ability: 1.0"



Note: Draw Latch and Keeper ordered separately.

Keeper



Part Numbers

Description	Part Number
Draw Latch	TL-60-102-07
Keeper	TL-17-601-07

All dimensions on this page are in inches.