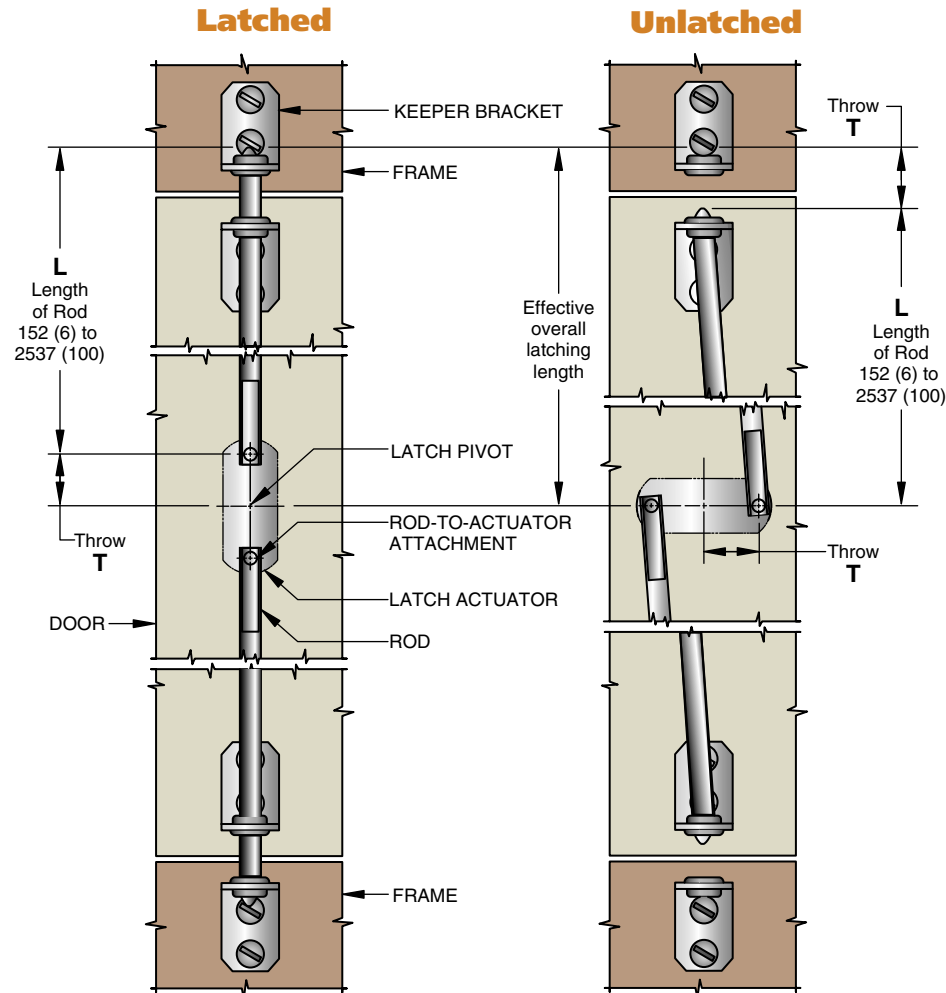


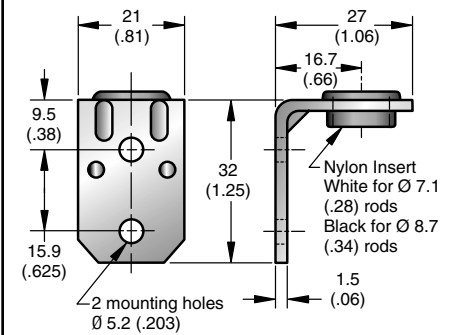
# Southco® Multi-point Latching Systems

## Fixed-rod Latching System

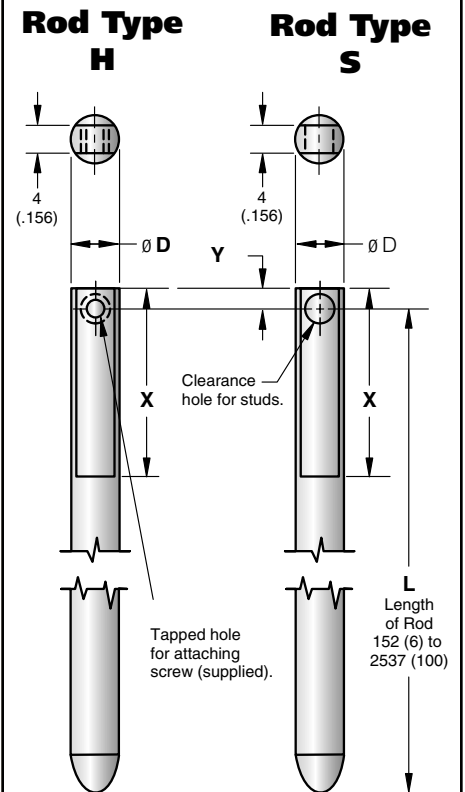
- For 2- and 3-point latching
- Assemblies include rods and guides
- Operates with multiple Southco® latch families



### Guide and keeper bracket detail



### Rod detail



BASIC PART NUMBER	ROD ASSEMBLY TYPE	Ø D	HOLE SIZE	X	Y
A5-21-XXX-10	S	7.1 (.28)	Ø 4.2 (.166) clear.	30 (1.19)	3.2 (.13)
A5-22-XXX-10	H		Tapped No. 8-32		
A5-31-XXX-10	S	8.7 (.34)	Ø 5 (.196) clear.	44.5 (1.75)	4.7 (.19)
A5-32-XXX-10	H		Tapped No. 8-32		

STANDARD ROD LENGTHS	
PART NUMBER XXX	L
120	305 (12.0)
240	610 (24.0)
360	914 (36.0)
480	1219 (48.0)

millimeter (inch)  
millimeter (inch)

Dimensions without tolerances are for reference only.

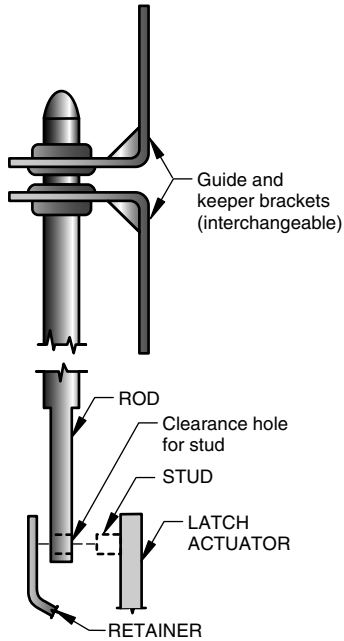
Multi-point Latching System

# Southco® Multi-point Latching Systems

## Fixed-rod Latching System

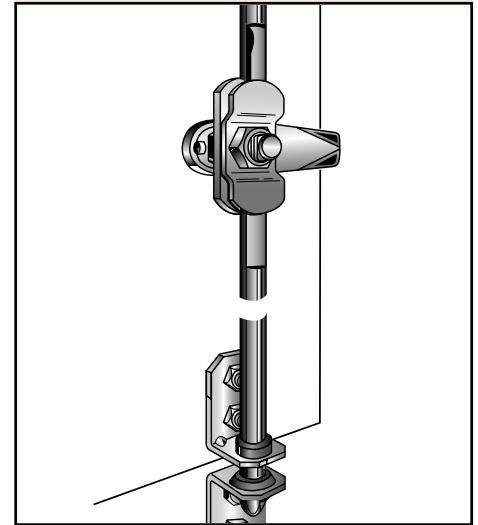
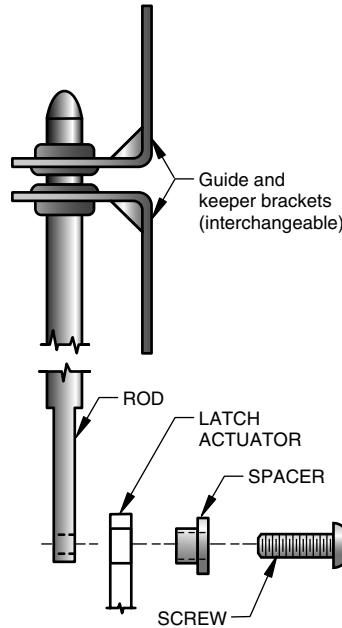
### Rod Type S

To attach rod to latch actuators having integral studs and rod retainer.



### Rod Type H

To attach rod to latch actuators having Ø 6.4 (.250) holes.



### Material and Finish

RODS: Aluminum, natural.

BRACKETS: 1010 Steel, zinc plate, chromate plus sealer.

BRACKET INSERTS: Nylon, white or black.

FOR TYPE H ONLY, SPACERS: 12L14 Steel, zinc plate, chromate plus sealer.

SCREWS: Low carbon steel, zinc plated with bright chromate dip.

**To order rod assemblies,** (assembly consists of a guide, keeper and rod):

1. Determine basic part number from table below.

OPERATING LATCH FAMILIES	SIZE/STYLE	BASIC PART NUMBER	ROD TYPE	T
No. 01 Flush Cup Latches	Small	A5-21-XXX-10	S	12.7 (.50)
	Mid-size	A5-31-XXX-10		19 (.75)
No. 24 Flush Cup Latches	2 and 3 point assemblies (non-locking)	A5-32-XXX-10	H	17.5 (.69)
No. 62 Lift and Turn Latches	Heavy Duty			31.8 (1.25)
	Large			22.2 (.88)
	Large (Flush)			31.8 (1.25)
No. 68 Bail and T-handle Latches	Mid-size T-handle			17.5 (.69)
	Small T-handle	A5-22-XXX-10	13.5 (.53)	
	Large T-handle. Bail Handle (Series 80)	A5-32-XXX-10	22.2 (.88)	
No. 92 L-handle and T-handle Latches	ALL	A5-21-XXX-10	S	19 (.75)

2. Effective overall latching lengths = L length + T. L length rod 152 (6) to 2537 (99.9) MAX. must clear frame in unlatched position.

3. Select XXX part number based on length required. See Standard Rod Lengths Table for stocked lengths. Custom lengths are available contact Southco for details.

4. Order 1 latch with actuator option (as appropriate), 2 Rod Assemblies for a complete system. See appropriate page for latch part number.

### Product Strength Guidelines

(To assist in your product selection; samples are available for your evaluation.)

**Flammability Rating: UL94 - V2**

millimeter (inch)  
millimeter  
(inch)

Dimensions without tolerances are for reference only.

Multi-point Latching System