

Southco® DP Series Compression Latch Self Adjusting

southco®



Grip Range

.12" to 1.44"

All styles of DP-106 feature easy one-hole installation and quarter-turn operation by turning the outer ring. Locking tension is adjustable by rotating the center spindle.

Material and Finish

Center Spindle, Cam, Locknut: Steel, zinc phosphate

Barrel: Die-cast zinc, black finish

Indicator Sleeve and Outer Ring: Black thermoplastic

Center Head: Steel (Knurled Head is zinc), finish as specified in tables

Mechanical

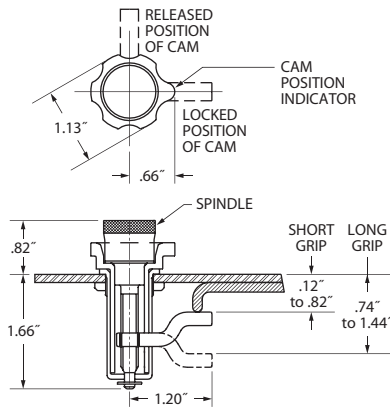
Panel Thickness Range: .048" to .128"

Grip Range (Short Grip): .12" to .82"
(cam curved towards panel)

Grip Range (Long Grip): .74" to 1.44"
(cam curved away from panel)

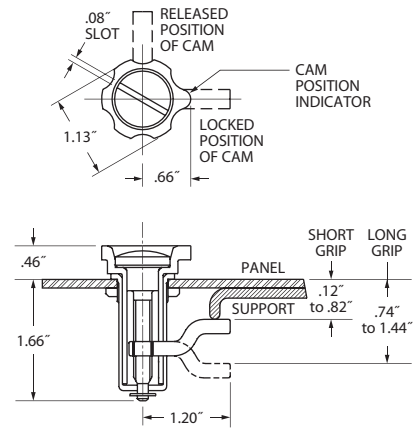
NOTE: Latch is supplied unassembled. See www.southco.com for assembly instructions.

Knurled Head



Grip Range	Spindle Finish	Part Number
.12" to .82"	Black	DP-106-KB
.12" to .82"	Chrome	DP-106-KC
.74" to 1.44"	Black	DP-106-KB
.74" to 1.44"	Chrome	DP-106-KC

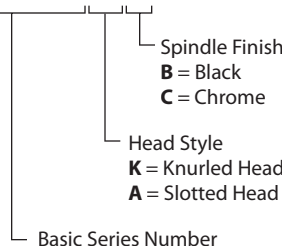
Slotted Head



Grip Range	Spindle Finish	Part Number
.12" to .82"	Black	DP-106-AB
.12" to .82"	Chrome	DP-106-AC
.74" to 1.44"	Black	DP-106-AB
.74" to 1.44"	Chrome	DP-106-AC

Part Numbers

DP-106-KB



Panel Preparation

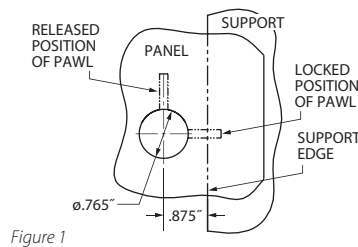


Figure 1

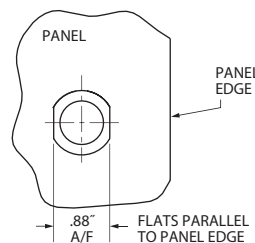


Figure 2

All dimensions on this page are in inches.

Southco® DP Series Compression Latch Self Adjusting



Grip Range	.32" to 1.50"
-------------------	---------------

The DP-140 provides quarter-turn operation, with locking tension provided upon further rotation. An added feature is that the center spindle ejects to show when the latch is undone.

Material and Finish

Head/Spindle, Cam, Spring: Steel, chromate finish

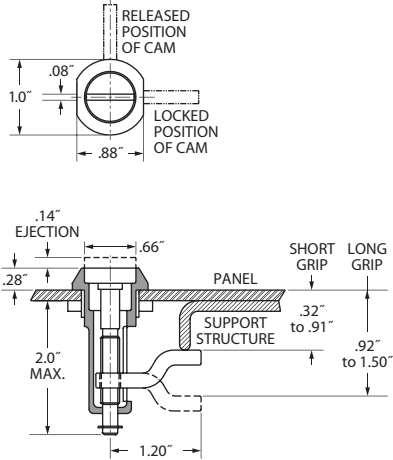
Barrel/Escutcheon: Die-cast zinc, clear chromate finish

Mounting Nut: Steel, zinc phosphate

Mechanical

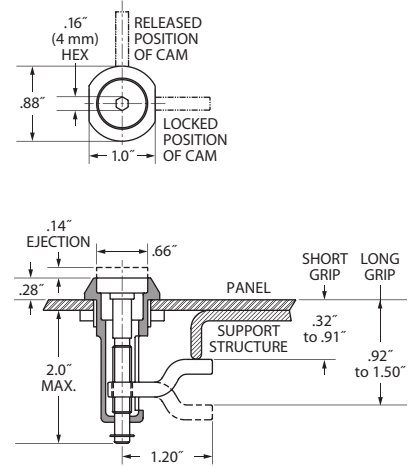
Panel Thickness Range: .048" to .128"

Slotted Head



Grip Range	Part Number
.32" to .91"	DP-140S
.92" to 1.50"	DP-140L

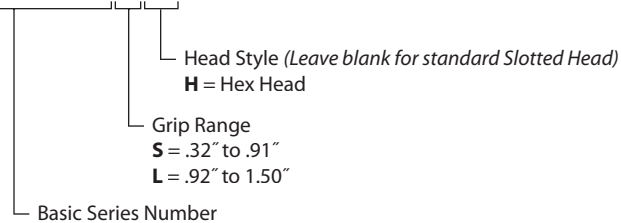
Hex Head



Grip Range	Part Number
.32" to .91"	DP-140SH
.92" to 1.50"	DP-140LH

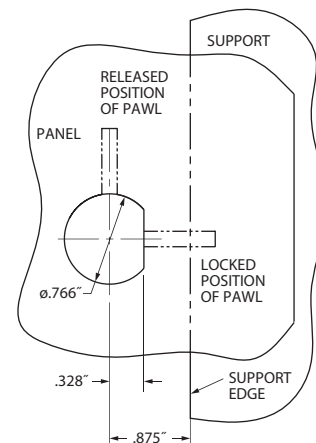
Part Numbers

DP-140LH



Panel Preparation and Installation

1. Prepare panel as shown in diagram at right.
2. Unscrew cam to its maximum grip position and ensure that cam is in center of the barrel opening. Remove locknut.
3. Insert barrel into hole and ensure that flat of barrel is in position as shown at right.
4. Install locknut and tighten securely.



Note: The barrel is "D" shaped, but the latch can be fitted to a round hole if correctly aligned.

All dimensions on this page are in inches.